



UNIVERSIDAD INDÍGENA BOLIVIANA AYMARA  
“TUPAK KATARI”

---

# SAWUTA SALTANAKA

Lourdes Quenta Perca  
Wilmer David Aguilar Aguilar

Chuqi Yapu – Bolivia  
Jallu qallta 2014

Aymara Aru, Saranakasxata Yatxataña Uta  
Instituto de Investigaciones de la Cultura y Lengua Aymara (IICLA)



© SAWUTA SALTANAKA

Universidad Indígena Boliviana Aymara “Tupak Katari”

**Junta Comunitaria tantacha irpiri:** Licarion Soto Mamani

**Jiliri irpiri:** Lucio Choquehuanca Yujra

**IICLA irpiri:** Benigno Callizaya Ojeda

**Yatxatirinaka:** Lourdes Quenta Perca  
Wilmer David Aguilar Aguilar

**QHANAÑCHAÑATAKI:** QARQAPATA/ CHACHAPOYA/ SAWUTANAKANA/  
SALTANAKAPA/ JAKSUTA/ UÑANCHAYATANAKAPA / SAWUNAKA/  
UÑSTAYATA.

**Panka pata wakt'ayiri:** Wilson Lozada Hidalgo

**Panka apsuri:** Producciones Gráficas “BUSTILLOS”

**Depósito Legal:** 4-1-13-15 P.O.

**I. S. B. N.:** 978-99974-842-6-0

**SENAPI :** 1-086/2015

**Nayriri utt'a:** UNIBOL Aymara “Tupak Katari”, Plaza Elizardo Pérez s./n. Cantón Warisata  
Municipio de Achacachi - Provincia Omasuyos.

**Payiri utt'a:** Localidad Cuyahuani - Municipio de Huarina - Provincia Omasuyos.

**Art'a jakhu:** 2895295 – 010-22136229.

**Iwxa qillqa apiri:** info@utupakkatari.edu.bo, Web. [www.utupakkatari.edu.bo](http://www.utupakkatari.edu.bo)

Aka pankaxa Universidad Indígena Boliviana Aymara “Tupak Katari” jach'a  
yatiqaña utana apsutawa, ukhamarusa 1322 kamachimpi uñjatawa.

# JARA

Qallta arunaka .....	9
P'uyu salta sawuta .....	12
K'utu .....	14
Siwara .....	15
P'uyu .....	16
Silku .....	17
Chunta .....	19
Allqamari .....	21
Unqalla .....	24
Qullu .....	26
Chhaxchha ch'uru .....	29
Sillanu .....	32
Iwisa qallu .....	35
Chuymanaka .....	37
Chacha-Warmi .....	39
Siwara kallcha .....	43
Jach'a p'uyu .....	46
Paya p'uyu .....	49
Pichjalla .....	51
Chhaxchha pichjalla .....	54
Tijirita .....	56
Q'iwí chunta .....	59
Nayranaka .....	62
Chunta .....	65
Jamach'i .....	67
Wisk'acha .....	70
Panqara .....	73
Unqalla chhiwchhi .....	75
Urqu achaku .....	78
Qachu achaku .....	80
Phisi .....	83
Nayra .....	85



Quqa ali.....	87
Pato.....	89
Qarwa .....	91
Kuti.....	93
Juku .....	97
SAWUNAKA.....	99
Qillwanaka .....	99
P'uyu p'uyu .....	100
Pirqa.....	101
Link'u link'u.....	101
Jach'a qhananaka.....	102
P'uyunaka .....	102
Silkunaka.....	103
Thakhinaka .....	103
K'anata.....	104
Nayranaka .....	104
Panqaranaka .....	105
K'anata sawu.....	106
Silkuni jach'a qhananaka.....	106
Kallapunaka .....	107
Uyu uyunaka .....	107
Wara wara .....	108
Silku.....	109
Qullunaka.....	110
Tukuya arunaka.....	112
ULLARATA PANKANAKA .....	113



# UÑACHT'A

Bolivia markana, kunapachati yanqha amuyuni jaqinaka khitinakati Aymara, Qhichwa aylluna qamasirinakaru jani wali amuyumpi uñjapkanxa, jupanakawa khayasa *Sucre* markana *Universidad Mayor Real y Pontificia San Francisco Xavier de Chuquisaca* uksana wayna tawaqu yatiqirinakampi aruskipt'asa 24 de mayo 2008 marana jani asxart'asa pata thaya uraqita, qhirwa uraqita jutirinakaru jani walipuni lurawayapxatayna. Ukhama uñjasawa, jilata Evo Morales Ayma Bolivia Marka jiliri irpiri *Pacto de Unidad* jach'a marka tamacha irpirinakaru jawillt'atayna, kuna jani walinakati *Sucre* Markana utjkana ukxata aruskipt'asa amuyt'añataki.

Uka tantachanxa mayja amuyumpiwa wali qhurumpi *Universidad Mayor Real y Pontificia San Francisco Xavier* uksa jach'a yatiqaña uta uksana yatiqirinakaru k'umiwayapxatayna, ukhama aruskipt'kasawa maya amtaru puripxatayna, uka amtasti kimsa *Universidades Indígenas Bolivianas* maya kamachimpi thakhiñchata utt'ayañataki, uka jach'a yatiqaña utanakasti aknirinakawa: UNIBOL Aymara “Tupak Katari”; UNIBOL *Quechua* “Casimiro Huanca”; UNIBOL *Guarani y Pueblos de Tierras Bajas* “Apiaguaiki Tüpa”, aka jach'a yatiqaña utanaka llumpaqa phaxsita 2 uru saraqataru 2008 marana D.S. 29664 kamachimpi thakhiñchata utt'asiwayi.

Ukhamakipanwa Aymara Aru, Saranakasxata Yatxataña Uta (IICLA) jallu qallta phaxsita 17 urunaka saraqataru 2009 marana R.R. N° 020/2009 kamachimpi utt'asiwayi, ukxaru *Junta Comunitaria* Tantacha 012/2013 kamachimpi IICLA uta utt'ata jaysawayxaraki, Aymara markasana saranakasa, arusa, amuyunakasa ukhamaraki luranakasata yatxatasa ch'amampi nayraqataru sarantayañataki, ukhamata Aymara marka taqiwjana uñt'atañapataki.



Ukhamakipanwa, sapa maranjama Aymara Aru, Saranakasxata Yatxataña Uta (IICLA) uksana yatxatatanaka pankaru tukuyasa apsutaski, sañani, jichha maraxa akniri pankanakawa markachirinakaru uñacht'ayata: Willka Aru N° 4; **AYMARATA** Ullart'asa qillqt'añani; Wawata, wayna tawaqkama jiltañapana, amuyupana mayjt'anakapa; **AYMARA SAWUNAKA III** Mallkunakana isinakapa, sawukipa, chichilla wiska, q'urawa k'anaña; **K'ISPIÑA**, Qullana juphata lurt'ata; Jach'a yatiqaña utanakatpacha, amuyunakasa saranakasaru kutikipjtayaña; **JUPHA ACHUYAÑA**; Qarwa usunaka saranakarjama qullaña; **SAWUTA SALTANAKA**; **AYMARA SUNI AYNUQA**; Wamaru tutura llachhu alimpi manq'ayasina millk'i jilxattayañxata ukhamaraki allpachu purakana laq'unakapa qullañxata; Juphata *barras energéticas* yatiqiri wawanakataki suma manq'a wakichañxata; **JUNTA COMUNITARIA UNIBOL AYMARA "TUPAK KATARI"**; *Video documental* p'ap'i wakiyañxata.

Lucio Choquehuanca Yujra  
RECTOR

UNIBOL Aymara "Tupak Katari"

## AMUYU LAKSU

Sawuta saltanaka pankaxa Qarqapata aylluna *municipio Ancoraymes* suyu *Omasuyos* ukhamaraki Chachapoya aylluna *municipio Copacabana* suyu *Manco Kápac* tuqinakanwa ch'uqi awayu, mirinu awayu, istalla, wallqhipu, ch'uspa, t'isnu, inkhuña ukata juk'ampi sawutanakana saltanakapa jaksusa wakt'ayasiwayi, ukanxa sawupa, tilata asi ch'ankhanakana saminakapa ukhamaraki qipanakapa uñakipasawa uyuyanakampi qhanstayata, ukhamatwa pachpa saltanakaxa wasitata jasaki sawusispa. Pampa sawumpi sawuta saltanakaxa paya tilata asi ch'ankhampi (*patxa ukhamaraki manqhi*) sawutawa, ukampirusa uka sawuta saltanakana uñanchanakapata yatxatasina qillqatarakiwa, kunalaykutixa sawurinakaxa saltanaka taypiwa yatinaka, amuyunaka, lup'itanaka aymara sarasarjama uñacht'ayapxi. Kunaymani sawuta saltanakata yatxatasaxa pachpa uñnaqarjama takiña sawurinakampi sawuñataki machaqa sawunakawa wakt'ayata, ukhamata ch'ulla tilata asi ch'ankhampi jalp'anaka sawuñataki.





## QALLTA ARUNAKA

Näyra aymara laq'a achachila awichanakasaxa janq'u janchini q'ara lunthata, jani wali amuyuni jaqinakana wali ñanqhachata, jisk'achata, uñisita, jawq'ata ukhamaraki jawayatawajikxatasipxatayna, ukampirusa q'aranakaxa mayja kasta qillqanaka apanipxatayna ukhamata jiwasana qillqanakasa janisa askikaspaxa ukhama uñjapxarakitayna. Uka kasta ullaña qillqaña yatiqañata wali jark'atapxataynawa, ukampirusa qhipa maranakaxa aymara wayna tawaqunakaxa janiwa jach'a yatiqaña utanakaru jasaki mantaña atipkanti, kunalaykutixa isi uñkatasa, janchi uñkatasa ukhamaraki *apellido* sutita uñt'asawa q'ara jaqinakaxa wali ñankhachapxana, ukatwa paya uru llumpaqa phaxsita saraqkipana paya waranqa kimsaqallquni maranwa Universidad Indígena Boliviana Aymara "Tupak Katari" jach'a yatiqaña utaxa *Decreto Supremo N° 29664* kamachimpi yuriyata, ukhamata jiwaspacha markasa amuyusaru ukhamaraki saranakasajama irptxañataki. Paya uru llumpaqa phaxsita saraqkipana paya waranqa tunka pusini maranarakwa *Cochabamba* markana nayriri machaqa yatxatata wayna tawaqunakaxa *título profesional* katuqawayxapxaraki.

Unibol Aymara "Tupak Katari" yatiqaña utanxa *CH'UQI AWAYU, MIRINU AWAYU SAWUÑATA MAYJT'ANAKAPATA UKHAMARAKI SALTANAKAPATA YATXATATAWA* Justino Callisaya Acero jilatana yanapt'apampi, Edwin Tintaya Quenta, Marcelina Julia Gonzales Rojas, Bernardino Huallpa Chura ukhamaraki Magdalena Lázaro Quispe uñakipirinakana iyawsatapampipiwa askinjama wakt'ayasiwayi, ukhampachasa aka yatxatata Chachapoya ukhamaraki Qarqapata ayllunakanwa lurasawayi, ukatxa pachpa sawixa *SAWUTA SALTANAKA* sutinchata pankaruwa kutikiptayasiwayxaraki.

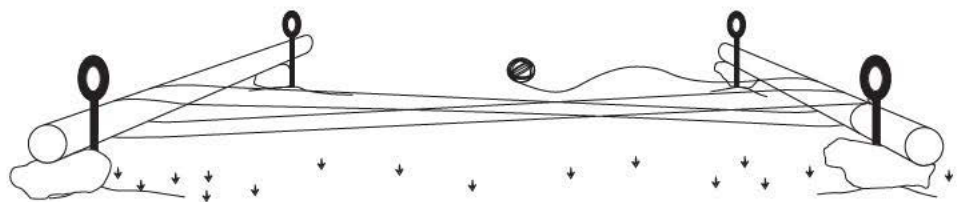


Qarqapata aylluxa suyu Omasuyos tuqinwa jikxatasi, Chuqi Yapu markatxa *104 Km* willka jalanta tuqina *Escoma* thakhinjama sarañanwa jikxatasiraki. Chachapoya ayllusti *municipio Copacabana* suyu Manco Kápac Titi Qaqa quta thiya iramanwa jikxatasi, Chuqi Yapu markatxa *139 Km* ukch'a jayanwa jikxatasiraki.

Aka pankanxa ch'uqi awayu, mirinu awayu, istalla, wallqhipu, ch'uspa, t'isnu, inkhuña ukata juk'ampi sawutanakana saltanakapawa jaksusa uñanchayata; kunjama sawutasa, qawqha chinuta ukhamaraki qawqha qipani qipanchata sawutasa taqi ukanakawa uyuyanakampi uñacht'ayata, ukhamarusa saltanakaxa janiwa ina amuyumpiki kuna sawutanakarusu sawutakikiti, jani ukasti maya sawutaruxa kuna saltaxaya wakischi ukhamaru suma amuyt'asa sawutawa, ukatwa saltanakana uñanchanakapata yatxatasina qillqt'ataraki. Uka salta sawuta jakhutanakasti jach'a *máquinas industriales* ukanaru tilantasa sawuñatakisa askirakiwa. Qhipa tuqirusa machaqa sawunakasti sawuta saltanakaru uñtasawa uñstayataraki, ukaxa takiña sawunakampi ukhamaraki yaqha sawurinakampi jalp'anaka sawuñatakiwa wakt'ayataraki.



Aymara markanxa awayunaka, inkhuñanaka, istallanaka, ch'uspanaka, ukata juk'ampi sawutanakaxa pampa sawumpi (*telar de piso*) sawutawa, pampa sawuxa pusi uraqiru ch'akt'ata ch'akhururu wakt'ayatawa; jani sawu lawanaka uraqiru puriñapatakixa sapa ch'akhururuwa maya yäpa qalampi aptata, sawuri kullakanakaxa uka wakt'ayataruwa asi ch'ankha q'iwikipasa tilantapxi.



Pampa sawuru asi ch'ankha tilañä.

Sawuri kullakanakaxa tilañä qalltañatakixa ch'iqa tuqita asi ch'ankha qhipaxa sawu lawaru chinkatasina nayraqata sawu lawanama manqhata pataru apsusina muytayanipxi, ukhamatwa wasitata qhipaxa sawu lawaru manqha tuqinama qiwhtayanipxaraki; ukhamata asi tilata ch'ankhaxa qhata waytañatakixa taypi chiqaru q'iwikipata sarayata.



Qarqapata ayllunwa Cesilia Perca Pasi sawuri kullakaxa ch'uqi awayu sawuski. Julli: Lourdes Quenta Perca; 2012.



Pampa sawumpi sawutanakaxa (*faz de urdimbre*) ukhama sawutawa; saltanakaxa purapa asi ch'ankha tilatarupuniwa uñsti, qipa ch'ankhasti sawutana ajayupakaspasa ukhamarakiwa asi ch'ankha katxaru.

Sawuri kullakanakaxa pampa sawumpi sawusaxa, saltanaka sawuñatakixa ampara luq'ananakampiwa asi ch'ankha pallt'apxi, uka pallt'ataruwa qipa ch'ankhampi qipanchapxaraki. Jichhaxa, kunjamasa saltanakaxa sawuta uka tuqitwa p'uyu saltampi qhananchata.

## P'UYU SALTA SAWUTA

Illawa

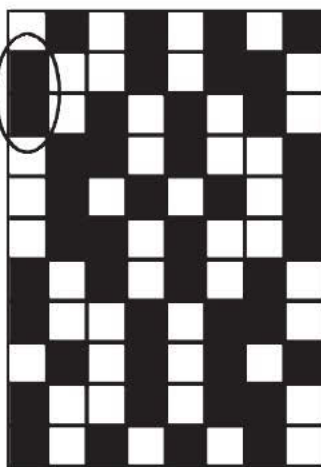
			4		4		
		3		3			
	2						2
1						1	



P'uyu salta sawuta.

A

Salta sawuta  
uñanchayata



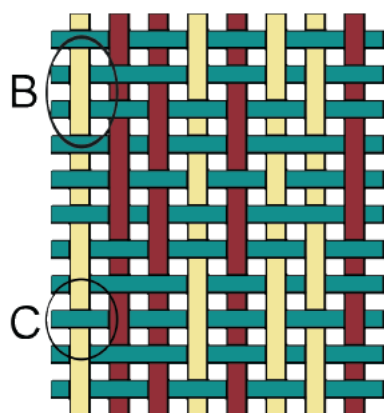
Q W W Q W Q Q W

	2		4
1			4
1		3	
	2	3	
	2		4
	2	3	
1		3	
1			4
	2		4
1			4
1		3	

Takxata



**Salta sawuta uñanchayata:** Aka uyuyanxa kunjamasa p'uyu saltana asi ch'ankhampi ukhamaraki qipa ch'ankhampi sawuta ukawa uñacht'ayata, ch'iyara samini saminchata jisk'a uyuyanakaxa "A" qipana waytata asi ch'ankharuwa uñacht'ayi, jamuqa wakt'ayata "B" ukansa q'illu asi ch'ankhaxa paya qaqqa larama qipampi waytatasa uñacht'ayatarakiwa. Jani samini jisk'a ch'usa uyuyanakaxa "C" qipa ch'ankhana jaytjata asi ch'ankhanakarakiwa. Ukhampachasa pachpa sawuta uñacht'ayata uyuya manqhaxanxa "Q" ukhamaraki "W" uka qillqanakani sapa amstaru sutinchatawa: "Q" uka qillqaxa q'illu asi ch'ankha sutinchi, ukatxa "W" uka qillqasti wila asi ch'ankharuwa sutincharaki, ukhamata aka p'uyu saltaxa paya samini asi ch'ankhampi sawutawa.



P'uyu salta sawuta uñanchayata.

**Illawa:** Illawa uyuyanxa p'uyu saltaxa qawqha kasta pallita asi ch'ankhampi sawutasa ukawa uñacht'ayata, ukhamata sawuta uñxatasa mayata pusikama kasta kasta pallt'ata asi ch'ankhanakaxa uñt'ata, ukatsti kimsiri palli kastawa wasitata uñsti, ukxaruxa pusiri palli kastarakiwa wasitata uñstaraki; tukuyañatakisti mayiri ukhamaraki payiri pallita kastanakarakiwa wasitata uñstaraki, ukhamata p'uyu saltaxa pusi kasta illawampiwa wasitata sawusispa.

**Takxata:** Takxata uyuyanxa, kunapachatixa paya samini kastata asi ch'ankhanakaxa illawanakampi acht'ayataxi uka pachawa sawuñaxa qalltañaxi, uka pachpa salta sawuñatakisti kunjamatixa takxata uyuyana uñacht'ayataki ukarjamawa takxatasina sawusispa; aynachata qalltasina akhamwa jisk'a uyuyanakanxa uñacht'ayi: (1) mayiri ukhamaraki (3) kimsiri takxatañawa wakisi sasawa uñacht'ayi, ukxaruxa (1) mayiri takxatampi ukhamaraki (4) pusiri takxatampi mayana wastaki takxatañawa wakisiraki. Ukhamatwa jisk'a uyuyanaka uñxatasina tukuyañkama aka pachpa saltaxa kunjamatixa salta sawuta uñanchayata uka pachpa sawusispa.

## K'UTU

Sawuri kullakanakaxa k'utu saltxa inkhuña ukhamaraki ch'uqi awayunakaruwa sawupxi. Aka saltaxa maya chinuta sawutawa; ch'uqi inkhuña ukhamaraki ch'uqi awayunakanxa janq'umpita ch'iyarampita sawutarakiwa, ukampirusa pusi qipampi qipsutarakiwa, ukhamata wasitata *máquinas industriales* ukanakampi sawuñataki askinjama wakt'ayata.

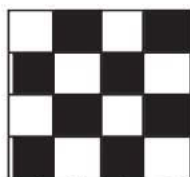


Ch'uqi awayuru k'utu salta sawuta.



K'utu salta jamuqata.

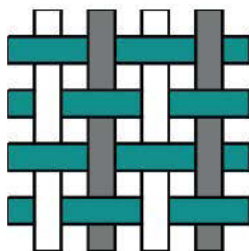
	2		2
1		1	



J C J C

	2
1	
	2
1	

K'utu saltaxa ch'uqi awayunakanxa paya janq'u qhana asi ch'ankhampita paya ch'iyara ch'amaka ch'ankhampita sawutawa, qipapasti ch'umphu saminirakiwa.



K'utu salta sawuta uñanchayata.

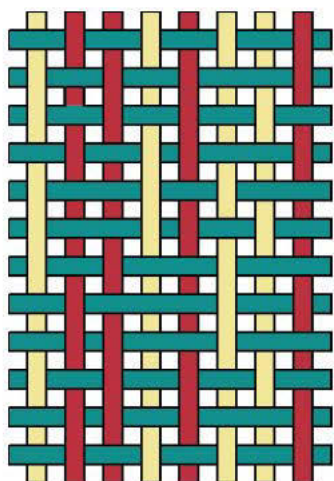
## SIWARA

Qarqapata aylunxa sawuri kullakanakaxa siwara saltxa inkhuña, qullqi wayaqa, t'isnu ukhamaraki ch'uqi awayuruwa sawupxi; ukhampachasa, jisk'a salta sutimpiwa uñt'apxaraki. Siwara saltaxa paya chinuta sawutawa, ukhamarusa qalltata tukuykamaxa tunka payani qipampi qipanchatarakiwa.



T'isnuru siwara salta sawuta.

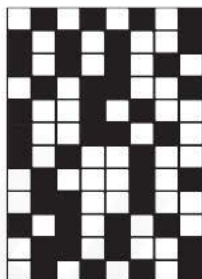
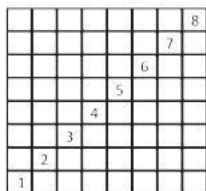
Siwara saltaxa q'illu asi ch'ankharuwa uñsti, maysa tuqirusti wila asi ch'ankharurakiwa uñstaraki, ch'uxña qipastijaniwa kawksarusa uñstiki, sawuta laka tuqina ukhamaraki ch'uku tuqinakwa uñstaraki.



Siwara salta sawuta uñanchayata.



Siwara salta jamuqata.



Q W W Q W Q Q W



## P'UYU

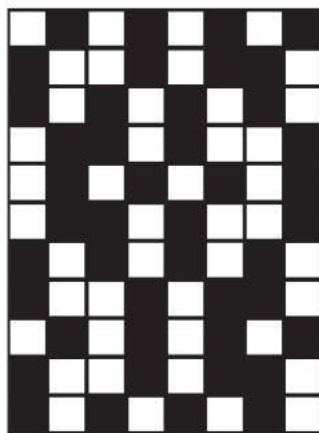
Qarqapata ayluna ukhamaraki Chachapoya aylunsa p'uyu saltaxa t'isnu, wak'a, chusi ukhamaraki inkhuñanakanwa sawuta, aka saltaxa paya chinuta tilatawa.

Denise Y. Arnold ukhamaraki Elvira Espejo Ayca yatxatirinakaxa p'uyuxa kunapachatixa maya warmixa jachuxi ukwa uñanchayi sapxiwa ukhamarusa uyu panqara sutimpiwa uñt'apxaraki<sup>1</sup>. Ukatwa aka saltaxa wak'aru sawutaraki.



T'isnuru p'uyu salta sawuta.

			4		4		
		3		3			
	2						2
1						1	



Q W W Q W Q Q W

	2		4
1			4
1		3	
	2	3	
	2		4
	2	3	
1		3	
1			4
	2		4
1			4
1		3	

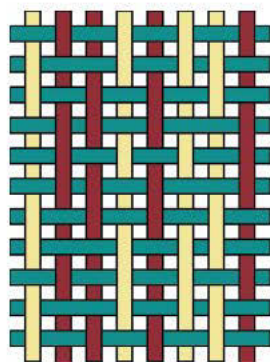


P'uyu salta jamuqata.

<sup>1</sup> Denise Y. Arnold, Juan de Dios Yapita ukhamaraki Elvira Espejo; HILOS SUELTOS: los andes desde el textil, La Paz – Bolivia; ILCA, Editorial Plural, 2007, Pág. 119.



P'uyu saltaxa paya chinumpita tunka mayani qipampita sawutawa, nayraqataxa maya q'illu, ukxaruxa paya wila, maya q'illu, maya wila, paya q'illu ukatxa maya wila ukhama samini asi ch'ankha tilatanakampi sawutawa.

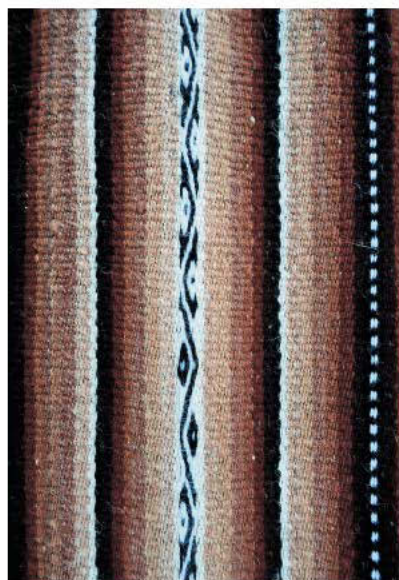


P'uyu salta sawuta  
uñanchayata.

## SILKU

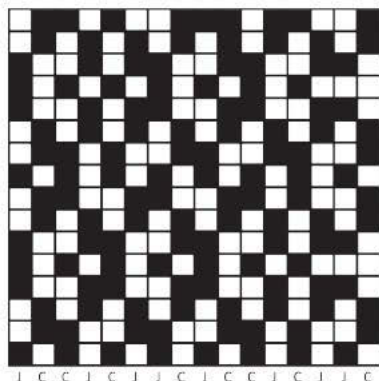
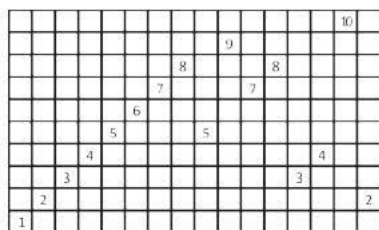
Silku saltaxa awayu, ch'uspa, t'isnu, inkhuña ukhamaraki qullqi imaña wayaqa sawutanakaruwa sawuta.

Silkuxa asiru thakiruwa uñanchayistu sasawa yaqhipa sawuri kullakanakaxa qhanañchapxi, kunati näyra pachanakaxa asiruxa janiwa maya ñanqha qullu uywjama uñt'atakataynati, jani ukasti wali suma yäqata jutiri pacha yatiyiri qullu uywataynawa, ukatxa qalanaka ukhamaraki wichhunaka muyt'asawa lluskhuraki, ukaru uñtasawa silku saltaxa sawutanakaru waraqataraki.



Ch'uqi awayuru silku salta sawuta.

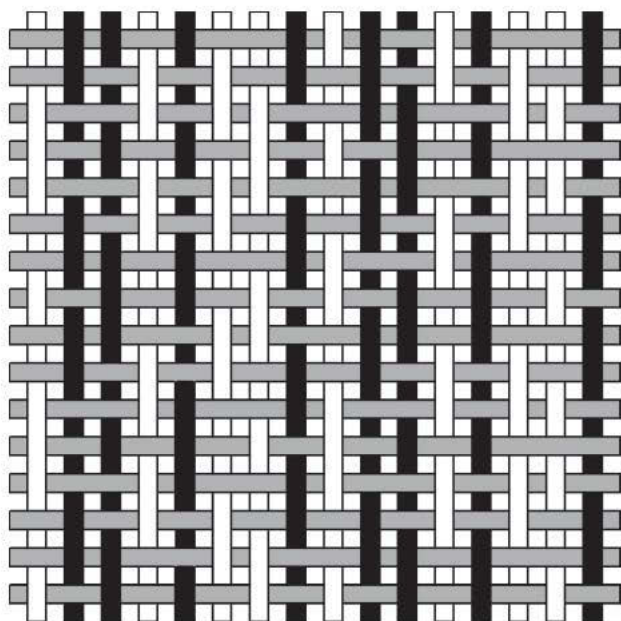
Ch'uqi awayunakanxa silku saltaxa janq'u "J" qhana asi ch'ankhampita ch'iyara "C" ch'amaka asi ch'ankhampita tilatawa, ukampirusa pusi chinumpita tunka suxtani qipampita sawutarakiwa.



	2	3	5		8	9	
	2		4	6	8	9	
1		4	6	7	9	10	
1	3	5	7				
1		4	6	7	9	10	
	2	4	6	8	9		
	2	3	5		8		
1	3	5	7		10		
	2	3		6	7	9	
	2	4	6	8	9		
1		4	5		8	10	
1	3	5	7				
		4	5		8	10	
	2	4	6	8	9		
	2	3		6	7	9	
1	3	5	7		10		



Silku salta jamuqata.



Silku salta sawuta uñanchayata.

## CHUNTA

Chunta saltaxa awayu, istalla ukhamaraki t'isnu sawutanakana waraqatawa, uñnaqa tuqiruxa chunta saltaxa janq'u samini asi ch'ankharuwa uñsti, maysa tuqirusti wila samini chunta saltarakiwa uñstaraki.

Chachapoya ayllunxa näyra laq'a achachilanaka ukhamaraki awichanakaxa ch'uju alitwa lijwana wana wakt'ayapxiritayna, lijwana kunta k'u'llxa qinwa quqa pallqanakatwa khithupxarakiritayna, ukatxa wana ñach'katañatakixa ch'uju alina pata sillp'ipampiwa ñach'katapxarakiritayna, chunta salta sawutanakaru waraqataxa lijwanaruwa uñanchayi. Qarqapata ayllunxa chunta saltaxa lijwana ukhamaraki yapuna irnaqañataki chuntarurakiwa uñanchayaraki.



Mirinu awayuru chunta salta sawuta.

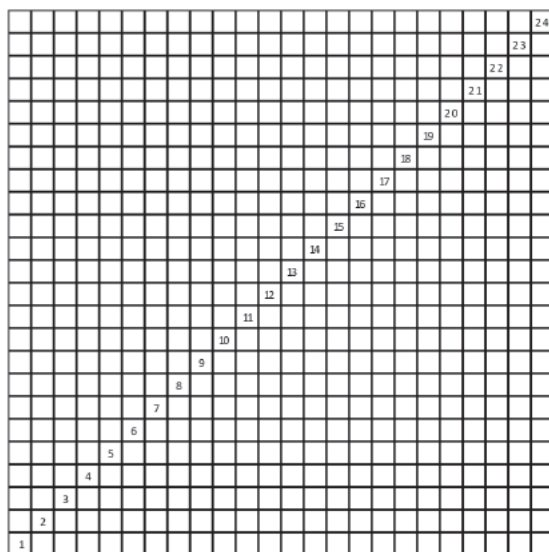


Chunta salta jamuqata.

Lijwanampi chuntampixa ch'uqi, apilla ukata juk'ampi yapu alinaka qurañataki, qawañataki ukhamaraki llamayuñatakiwa apnaqata, ukatwa sawuri kullakanakaxa sawutanakaru waraqapxi.

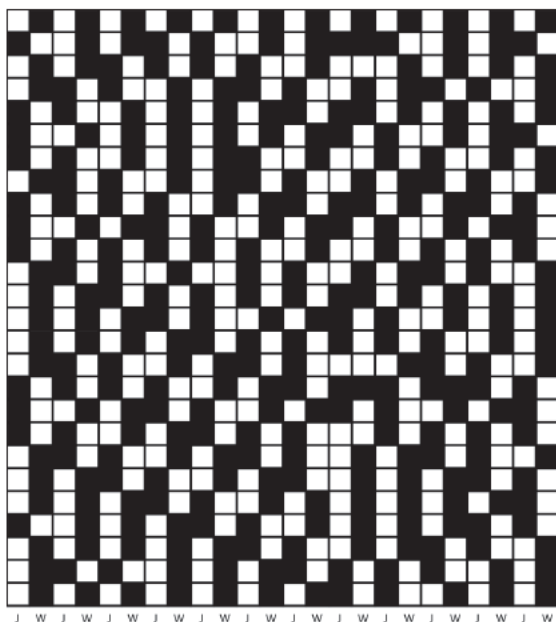
## Illawa

Chunta saltaxa paya tunka  
pusini kasta illawani  
sawutawa.



## Sawuta

Chunta saltaxa suxta  
chinumpita paya tunka  
suxtani qipampita  
sawutawa, suxta chinutxa  
chikataxa janq'u asi  
ch'ankhawa, yaqha  
chikatasti wila asi  
ch'ankharakiwa, ukhamata  
janq'uta "J" qalltasina  
wilampi "W" maykipa  
tilata asi ch'ankhampi  
sawutawa.





## Takxata

Kunjamtixa paya tunka  
pusini illawa uñt'ataki  
ukhamarjamawa paya  
tunka pusini takxatawa  
wakisi.

	2	4	6	8	10	12	14	16	18	20	22	24		
1		4	6	7	9		12	14	15	17	20	22	23	
	2	4	5	7	9	11		14		18	20	22	24	
	2	3	5		8	10	11	13		16	18	19	21	24
1	3		6	8	10	12	13	15	16	18	20	22	24	
1		4	6	8	10	12	14	15		17	20	22	23	
1	3		6	8	10	11		14		17	19		22	24
	2	3	5		8	10	11	13		16	18	19	21	24
1	3	5	7		10	12	13	15	16	18	20	21	23	
1		4	6	7	9		12	14	15		17	20	22	23
1	3	5	7	9	11		14		17	19	21	23		
	2	3	5		8	11	13		16	18	19	21	24	
	2	4	5	7	9	11	13	15	16	18	20	22	24	
	2	4	6	7	9		12	14	15		17	20	22	24
	2	4	6	8	9	11	13	15	17	19		22	24	
	2	3	5		8	10	11	13		16	18	19	21	24
1	3	5	7		10	12	13	15	16	17	19	20	21	23
1		4	6	7	9		12	14	15		17	20	22	23
1	3		6	8	9	11	13		17	19	21	23		
	2	3	5		8	10	11	13		16	18	19	21	24
	2	4	5	7		10	12	13		16	18	20	21	23
	2	4	6	7	9		12	14	15	18	20	22	23	
1		4	6	8	9	11		14	16	18	20	21	23	
	2	4	6	8	10	11	13		16	18	19	21	24	
	2	3	5		8	10	12	13	15	17	19		22	24
	2	4	6	8	10	12	14	15		17	20	22	24	

## ALLQAMARI

Qarqapata ukhamaraki Chachapoya ayllunakanxa allqamari jach'a  
jamach'ixa awayu, inkhuña ukhamaraki istalla sawutanaka taypiruwa  
sawuta.



Mirinu awayuru allqamari salta sawuta.



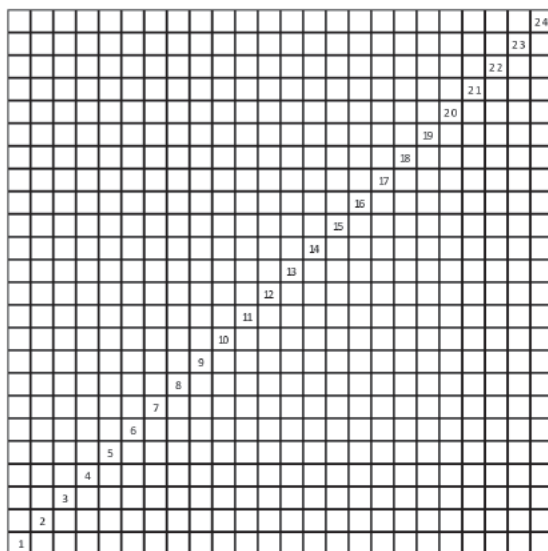
Allqamari salta jamaqata.

Allqamarinakaxa qullunakanwa jakapxi, jupanakaxa panipuniwa (*urqu qachu*) jakapxi, jiliri yatiñani tayka awkinakaxa janiwa allqamariru qalampi jaquñati; tilluwa tilluntasiri sasawa sapxi.

Maysa tuqitsti Qarqapata ayllunxa janiwa qalampi jaquñati; amparawa ñusaqasiri sasawa sapxaraki, ukatxa achachilanakana aphallapawa allqamari taypi jutarakiritayna.

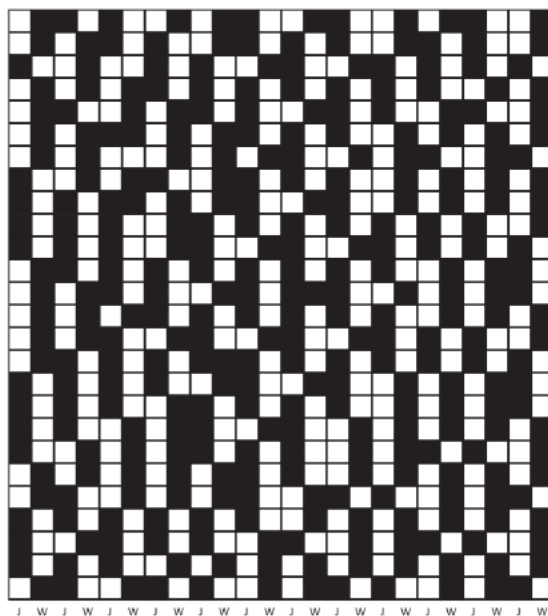
## Illawa

Allqamari saltaxa paya tunka pusini kasta illawani sawutawa, janiwa mayasa pachpa kasta paya kuti utjkiti.



## Sawuta

Allqamari saltaxa suxta chinumpita paya tunka suxtani qipampita sawutawa, suxta chinutxa chikataxa janq'u asi ch'ankhawa, yaqha chikatasti wila asi ch'ankharakiwa, ukhamatwa janq'uta "J" qalltasina wilampi "W" maykipa tilata asi ch'ankhampi sawutawa.



## Takxata

Kunjamtixa paya tunka  
pusini illawa uñt'ataki  
ukhamarjamawa paya  
tunka pusini takxatawa  
wakt'ayata.

	2	3		5		8		10	11		14	15		18	20	21		24
	2		4	5		7		10	11		13	15		18	19	21		24
1			4			7		9		12	13		16	17	19	21		23
	2		4			6	7		9		11	13		15		19		22
	2	3			6		8	9		11		14	15		17		20	21
	2		4	5	6		8		10	11		13		15		18	20	22
	2		4				8		10		12	13		16	18	19		22
1			4		6	7			10	11		13		15		18	20	22
1		3		5	6		8		10	11		14	15		18		20	22
1		3		5			8	9		11		13		15		17	19	21
1		3		5			8	9		11		13		16	17	19	21	23
	2	3		5		7		9		11		13		15		17		20
	2		4	5		7			10	11		13	14	15		18		20
	2		4		6	7		9		11		13		15		17		20
	2		4	5			8	9		11		13		15		17		20
	2		4	5			8	9		11		13		16	17	19	21	24
	2	3		5		7		9	10	11		13		15		17	19	21
1		3		5		7			10	11		14	15		18		20	22
1		3		5			8	9		11		13		15		18	20	22
1		3				8	9		11		13		15		18	19	20	22
1			4		6		8	9		11		13		16	18	19	21	24
	2		4		6		8		10	11		13		16	18		20	22
	2	3			6		8		10	11		13		16	18		20	22
	2		4	5		7		9		11		13		16	18	19	21	24
1		3		5		7		9		11		14	15		18		20	22
1			4	5		7		9		11		13		16	18	19	21	24
1		3		5			8		10		12	14	15		18		20	22
	2	3			6	7		9		11		13		16	18		20	22

## UNQALLA

Chachapoya aylluxa unqalla saltaxa mirinu awayunakaruwa waraqata, Qarqapata ayllunsti ch'uqi awayu, inkhuña, istalla, wallqhipu, qullqi wayaqa, t'isnu ukhamaraki tari sawutanakaruwa sawurinakaxa waraqt'apxi.



Ch'uqi awayuru unqalla salta sawuta.



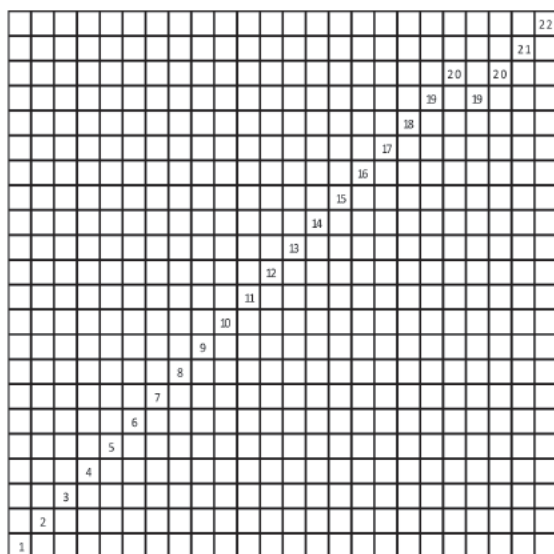
Unqalla salta jamuqata.

Unqallanakaxa Titi qaga qutana ukhamaraki qullu pata jisk'a qutanakanwa jakapxi, jupanakaxa jisk'a chhiqhanikipxiwa ukatwa jani jasaki tuytaña atipkiti; uma patanakwa tupupxi ukhamaraki t'ijtapxi, uma manqharusti uka pachparakiwa mantaña manq'a thaqhiri (*challwanaka*) yatipxaraki.

Uka uywanakaxa apu achachilanakana uywapawa sapxiwa, ukatxa jiwasa chikawa aka pacha uraqina jakapxi ukatwa sawutanakana chikanchayasiraki.

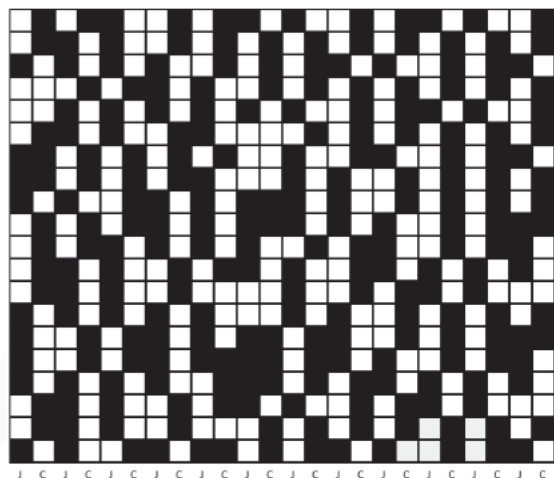
## Illawa

Unqalla saltaxa paya tunka payani kasta illawani sawutawa, tunka llatunkiri ukhamaraki paya tunkiri kasta illawanakakiwa paya kutikama utjaraki.



## Sawuta

Unqalla saltaxa suxta chinumpita paya tunka qipampita sawutawa, suxta chinutxa chikataxa janq'u samini asi ch'anqhawa, yaqha chikatasti ch'iyara samini asi ch'ancharakiwa; ukhamatwa janq'uta "J" qalltasina ch'iyarampi "C" maykipa tilata asi ch'ankhampi sawutawa.



Unqalla saltaxa janq'u asi ch'ankharuwa uñnaqa tuqixa uñsti, mayasa tuqirusti ch'iyara saltarakiwa uñstaraki.

## Takxata

Paya tunka payani kasta illawanakawa uñt'ata, ukatwa paya tunka payani takxata wakisirakispa.

	2		4	5		8		10	11		13		16	18	19		22
	2	3		5		8		10		12	14		16		18	20	22
1		3		5		7		10		12	14	15		17		20	21
			4		6	7		9		12	14		16	18		20	22
		3		5		7		9	11		13		16	18	19		22
	2	3		5		8	9				14		16		18	20	22
1	2		4		6		8	10			13		16	17		20	21
1	2		4		6		8	9			13		15		18	20	22
1		3			6	7		9	11	12	13		15		18	20	22
	2		4		6	7		9	11	12	13		15		17	20	21
	2		4	5		7		9		11			14	16	17		20
	2	3		5		8		10	11		13		16	17		19	21
	2	3		5		8					13		16		18	19	
1		3		5		7		9			13		15		18	20	22
1			4		6	7		9		11	12		14	15		18	20
1			4		6	7		9	10	11	12		14	15		17	20
1		3		5		7			10	11	12		14	16	17		19
	2	3		5		8		10	11		13		16		18	19	
	2	3		5		8					12		14	16	18		20
1		3			6	7		9	10		12		14	15		17	20

## QULLU

Qarqapata ayllunxa sawuri kullakanakaxa qullu saltaxa awayu ukhamaraki t'isnu sawutanakaruwa waraqt'apxi. Aka pacha jakawi uraqinx a jisk'a ukhamaraki jach'a uywiri qullunakawa utji, Qarqapata aylluxa Illampu achachila jak'anwa jikxatasi ukatwa sawurinakaxa Illampu achachilaru yaqasawa sawutanakaru waraqapxi.

Yaqhipa qullu patanakana uywanaka awatisa sawuri kullakanakaxa, qullunakana awatita uywanakaxa chhuxllanaka manqh'apxi sapxiwa, ukatwa ukhama amuyasa sawupxaraki.



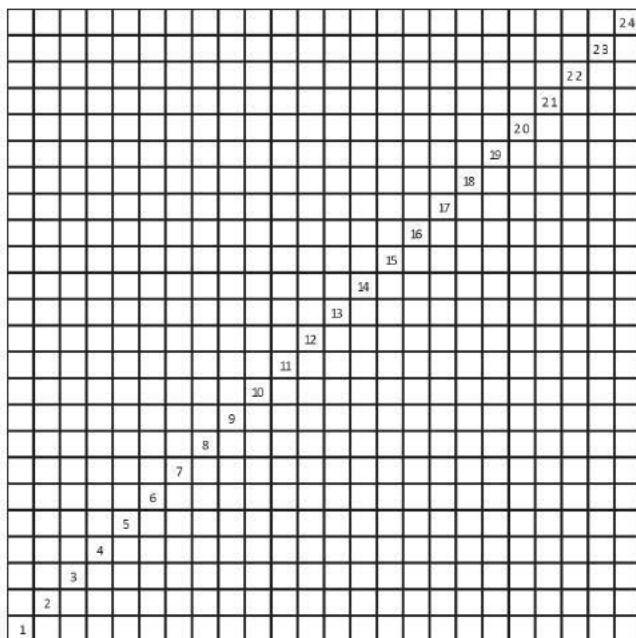
T'isnuru qullu salta sawuta.



Qullu salta jamuqata.

## Illawa

Qullu saltaxa paya tunka pusini kasta illawani sawutawa, janiwa kikipanakaxa paya kuti utjkiti.

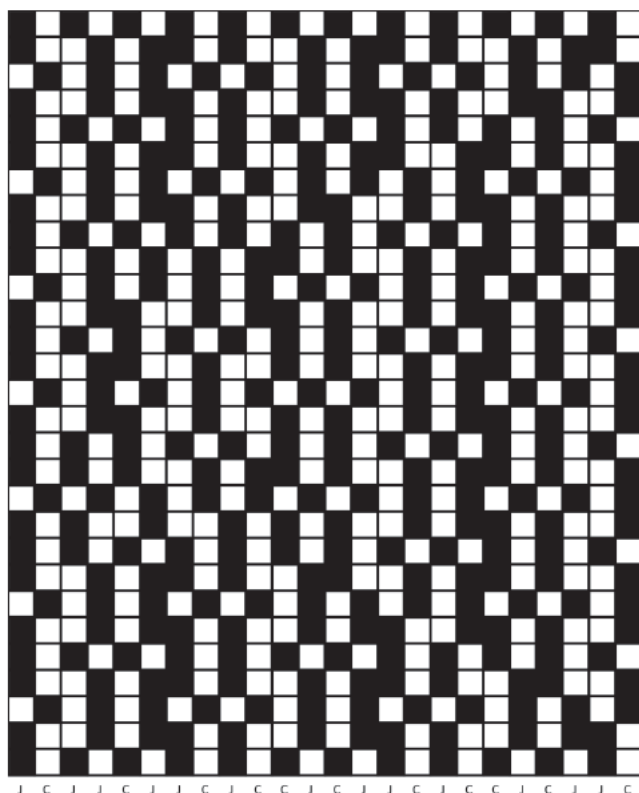




## Sawuta

Qullu saltaxa suxta chinumpita paya tunka llatunkani qipampita sawutawa, suxta chinutxa chikataxa janq'u samini asi ch'ankhawa, yaqha chikatasti ch'uxña samini asi ch'ankharakiwa, ukhamatwa janq'uta "J" qalltasina ch'uxña "C" tilata asi ch'ankhampi wakt'ayasina sawutawa.

Qullu saltaxa uka pachparakiwa janq'u asi ch'ankharu uñnaqa tuqipaxa uñsti, maysa tuqirusti ch'uxña saltarakiwa uñstaraki.





# Takxata

Paya tunka pusini kasta illawanakawa uñt'ata, ukatwa paya tunka pusini takxata wakisirakispa.

1		3		5		7		9		11		13		15		17		19		21		23	
1			4		6	7		9			12		14	15		17			20		22	23	
	2		4		6		8		10		12		14		16		18		20		22		24
1			4		6	7		9			12		14	15		17			20	21			24
1		3		5		7		9		11		13		15		17		19		21		23	
1			4		6	7		9			12		14	15			18	19		21			24
		2		4		6		8		10		12		14		16		18		20		22	24
1			4		6	7		9			12	13			16		18	19		21			24
1		3		5		7		9		11		13		15		17		19		21		23	
1			4		6		8		10	11		13			16		18	19		21			24
		2		4		6		8		10		12		14		16		18		20		22	24
1			4	5			8		10	11		13			16		18	19		21			24
1		3		5		7		9		11		13		15		17		19		21		23	
1			4		6		8		10		11		13			16		18	19		21		24
		2		4		6		8		10		12		14		16		18		20		22	24
1			4	5			8			11		13			16		18	19		21			24
1		3		5		7		9		11		13		15		17		19		21		23	
1		3		5			8		10	11		13			16		18	19		21			24
		2		4		6		8		10		12		14		16		18		20		22	24
1			4	5			8			11		13			16		18	19		21			24
1		3		5		7		9		11		13		15		17		19		21		23	
1			4		6	7		9			12	13			16		18	19		21			24
		2		4		6		8		10		12		14		16		18		20		22	24
1			4		6	7		9			12		14	15			18	19		21			24
1		3		5		7		9		11		13		15		17		19		21		23	
1			4		6	7		9			12	13			16		18	19		21			24
		2		4		6		8		10		12		14		16		18		20		22	24
1			4		6	7		9			12		14	15		17			20		22	23	
1		3		5		7		9		11		13		15		17		19		21		23	

# CHHAXCHHA CH'URU

Qarqapata aylluna ukhamaraki Chachapoya ayllunsa sawuri kullakanakaxa chhaxchha ch'uru saltxa awayu, t'isnu ukhamaraki tari sawutanakaruwa sawupxi.

Aka chhaxchha ch'uru saltaxa paypacha ayllu tuqinwa sawuta, sawuri kullakanakaxa qullu patanakana uywanaka awatisawa ch'uru ch'uru laq'u uñjapxiritayna, ukatwa sawutanakaruxa waraqataraki.



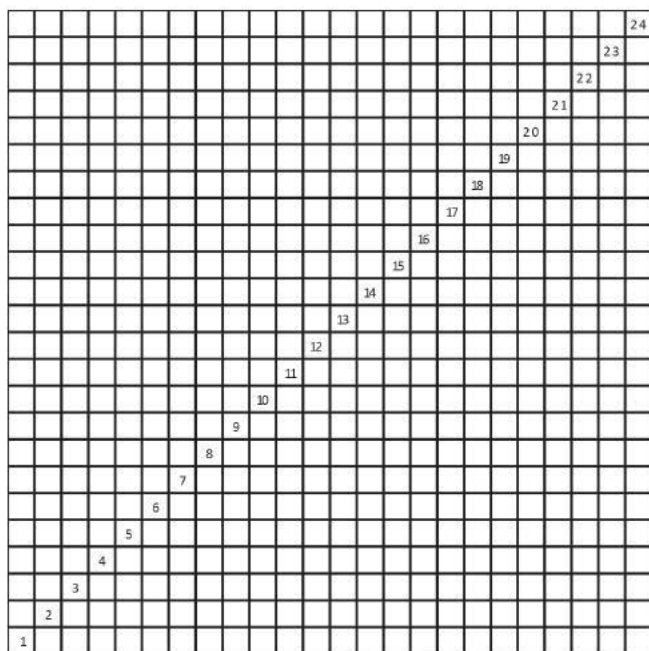
Mirinu awayuru chhaxchha ch'uru salta sawuta.



Chhaxchha ch'uru salta jamuqata.

## Illawa

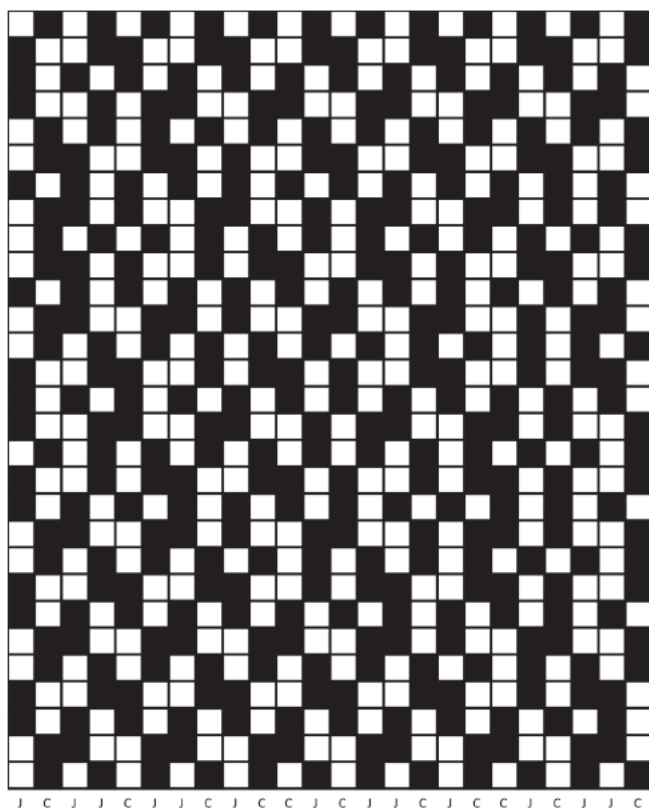
Chhaxchha ch'uru saltaxa paya tunka pusini kasta illawani sawutawa, janiwa paya kuti kikipanakaxa utjkiti.



## Sawuta

Chhaxchha ch'uru saltaxa suxta chinumpita paya tunka llatunkani qipampita sawutawa, suxta chinutxa chikataxa janq'u samini asi ch'ankhawa, yaqha chikatasti ch'iyara samini asi ch'ankharakiwa, ukhamatwa janq'uta "J" qalltasina ch'iyara "C" tilata asi ch'ankhampi wakt'ayasina sawutawa.

Chhaxchha ch'uru saltaxa uka pachparakiwa janq'u asi ch'ankharuwa uñnaqa tuqixa uñsti, maysa tuqirusti ch'iyara saltarakiwa uñstaraki.



## Takxata

Paya tunka pusini kasta illawanakawa uñt'ata, ukatwa sawuñataki paya tunka pusini takxata wakisirakispa.

	2	4	6	8	10	12	14	16	18	20	22	24
1		4	5	8	9	12	13	16	17	20	21	24
1	3	5	7	9	11	13	15	17	19	21	23	
1		4	6	7	10	11	14	15	18	19	22	23
	2	4	6	8	10	12	14	16	18	20	22	24
	2	3	6	7	9	12	13	16	17	20	21	24
1	3	5	7	9	11	13	15	17	19	21	23	
	2	3	5	8	9	12	14	15	18	19	21	23
	2	4	6	8	10	12	14	16	18	20	22	24
	2	3	5	8	10	11	14	15	17	20	21	24
1	3	5	7	9	11	13	15	17	19	21	23	
	2	3	6	7	9	12	13	16	17	20	22	23
	2	4	6	8	10	12	14	16	18	20	22	24
1		4	5	8	10	11	13	16	17	20	22	23
1	3	5	7	9	11	13	15	17	19	21	23	
1		4	5	8	9	12	14	15	18	19	21	24
	2	4	6	8	10	12	14	16	18	20	22	24
1		4	6	7	10	11	13	16	18	19	21	24
1	3	5	7	9	11	13	15	17	19	21	23	
	2	3	6	7	9	12	13	16	18	19	21	24
	2	4	6	8	10	12	14	16	18	20	22	24
1		4	5	8	9	12	14	15	18	19	21	24
1	3	5	7	9	11	13	15	17	19	21	23	
	2	3	6	7	9	12	13	16	18	19	21	24
	2	4	6	8	10	12	14	16	18	20	22	24
1		4	5	8	9	12	14	15	18	19	21	24
1	3	5	7	9	11	13	15	17	19	21	23	
	2	3	6	7	9	12	13	16	18	19	21	24
	2	4	6	8	10	12	14	16	18	20	22	24
1		4	5	8	9	12	13	16	17	20	22	23
1	3	5	7	9	11	13	15	17	19	21	23	
	2	3	6	7	9	12	13	16	18	19	21	24
	2	4	6	8	10	12	14	16	18	20	22	24
1		4	5	8	9	12	13	16	17	20	22	23
1	3	5	7	9	11	13	15	17	19	21	23	
	2	3	6	7	9	12	13	16	18	19	21	24
	2	4	6	8	10	12	14	16	18	20	22	24
1		4	5	8	9	12	13	16	17	20	22	23
1	3	5	7	9	11	13	15	17	19	21	23	
	2	3	6	7	9	12	13	16	18	19	21	24
	2	4	6	8	10	12	14	16	18	20	22	24
1		4	5	8	9	12	13	16	17	20	22	23
1	3	5	7	9	11	13	15	17	19	21	23	
	2	3	6	7	9	12	13	16	18	19	21	24
	2	4	6	8	10	12	14	16	18	20	22	24

## SILLANU

Qarqapata ayllunxa sillanu saltaxa awayu, wallqhipu, inkhuña, tari ukhamaraki t'isnu sawutanakaruwa sawuta.

Näyra pachanakaxa Qarqapata aylluna jakiri jaqinakaxa wallisaruwa ch'uñu, iwisa lip'ichinaka, atita, ukata juk'ampi achunakwa tunqu ukhamaraki muxsa achunakampi turkiri apapxiritayna, uksaru sarañatakixa qala kayuru khumxatasawa sarapxiritayna, apachitata

aynacharuxa wali muytasa muytasawa thakixa mantaraki, ukaru uñtasawa sawuri kullakanakaxa sillanu saltxa sawutanaka taypi uñanchayapxi.



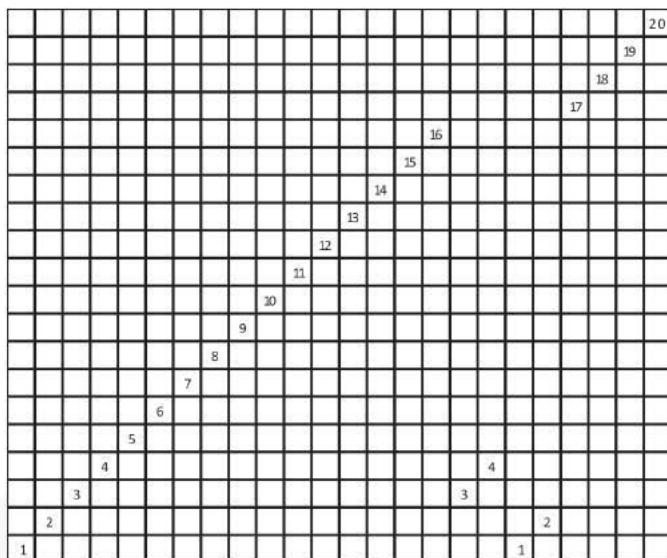
T'isnuru sillanu saltxa sawuta.



Sillanu saltxa jamuqata.

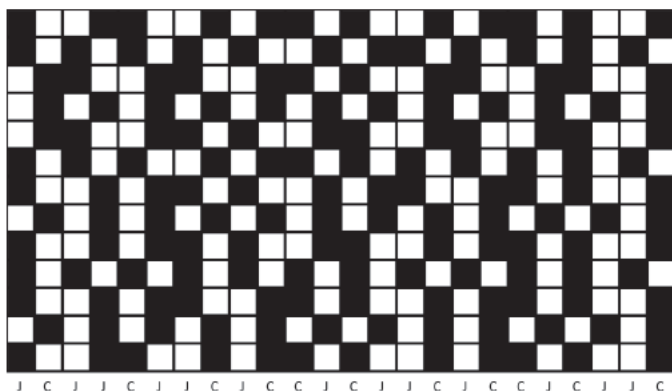
## Illawa

Sillanu saltaxa paya tunka kasta illawani sawutawa, mayirimpi, payirimpi, kimsirimpi ukhamaraki pusirimpiwa payakama utji.



## Sawuta

Sillanu saltaxa suxta chinumpita tunka kimsani qipampita sawutawa, suxta chinutxa chikataxa janq'u samini asi ch'ankhawa, yaqha chikatasti ch'uxña samini asi ch'ankharakiwa, ukhamatwa janq'uta "J" qalltasina ch'uxña "C" tilata asi ch'ankhampi wakt'ayasina sawutawa.



## Takxata

Paya tunka kasta illawanakawa uñt'ata, ukatwa sawuñataki paya tunka takxatanaka wakisirakispa.

1			4	5		8	10	11		13		16	17		20
1	3		5		7	9		12		14	15	17		19	
	2	3		6	7		10	11		13		16	17		20
	2	4		6		8	10		12		14	16		18	20
	2	3		6	7		9		12	13		16	17		20
1	3		5			8	10	11		13		15	17		19
1			4		6	7	9		12		14	15		17	20
	2		4		6		8	10		12		14	16		18
1			4		6	7	9		12	13		16	17		20
1	3		5		7		9		11	13		15	17		19
1			4		6	7		10	11		13		16	17	20
	2		4		6		8	10		12		14	16		18
1			4	5		8	10	11		13		16	17		20

## IWISA QALLU

Chachapoya aylluna ukhamaraki Qarqapata ayllunsa iwisa qallu saltaxa awayu, qullqi wayaqa ukhamaraki t'isnu sawutanakanwa sawuta.



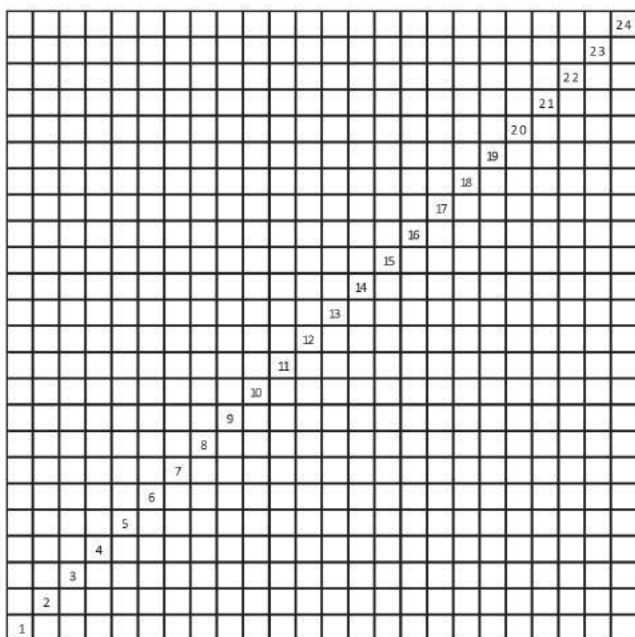
T'isnuru iwisa qallu saltaxa sawuta.



Iwisa qallu saltaxa jamuqata.

## Illawa

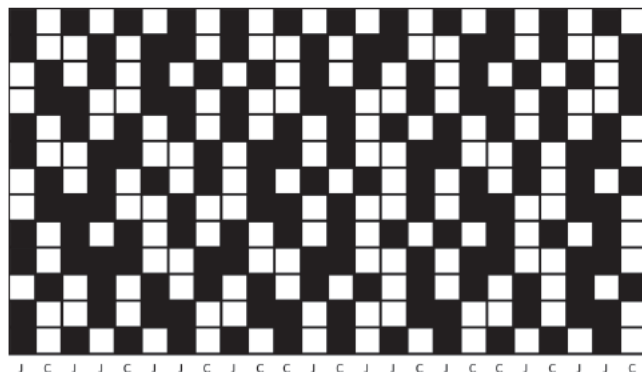
Iwisa qallu saltaxa  
paya tunka pusini  
kasta illawani  
sawutawa, janiwa  
mayasa kikipaki  
paya kuti uñt'atakiti.





## Sawuta

Iwisa qallu saltaxa suxta chinumpita tunka kimsani qipampita sawutawa, suxta chinutxa chikataxa janq'u samini asi ch'ankhawa, yaqha chikatasti ch'uxña samini asi ch'ankharakiwa, ukhamatwa janq'uta "J" qalltasina ch'uxña "C" tilata asi ch'ankhampi wakt'ayasina sawutawa.



## Takxata

Paya tunka pusini kasta illawanakawa uñt'ata, ukatwa sawuñataki paya tunka pusini takxatanaka wakisirakispa.

1		3		5		7		9		11		13		15		17		19		21		23	
1			4		6	7		9			12		14	15			18	19		21			24
	2		4		6		8		10		12		14			16		18		20		22	24
	2	3			6	7		9			12	13				16		18	19		21		24
1		3		5		7		9		11		13		15		17		19		21		23	
1			4	5			8		10	11		13			16	17			20		22	23	
	2		4		6		8		10		12		14		16		18		20		22		24
	2	3	4			7			10	11		13			16		18	19			22	23	
1		3		5		7		9		11		13		15		17		19		21		23	
1		3	4	5			8	9			12	13			16		18	19			22	23	
	2		4		6		8		10		12		14		16		18		20		22		24
1			4		6	7			10	11		13			16	17			20		22	23	
1		3		5		7		9		11		13		15		17		19		21		23	

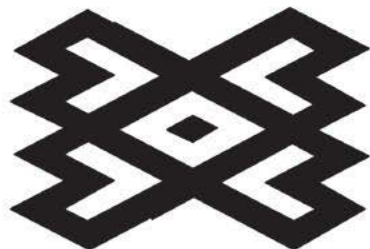


## CHUYMANAKA

Chuymanaka saltaxa t'isnu sawutanakaruwa jilpacha sawuta, ukampirusa Qarqapata aylluna ukhamaraki Chachapoya ayllunsa aka chuyma saltaxa wali suma munasiña chuymampi sawt'iri kullakanakaruwa uñanchayi, khitinakatixa jani sawuña yatipki uka kullakanakasa phuchhanakaparu ukhamaraki allchhinakaparu churañatakiwa sawuyasipxiritayna.



T'isnuru chuymanaka salta sawuta.

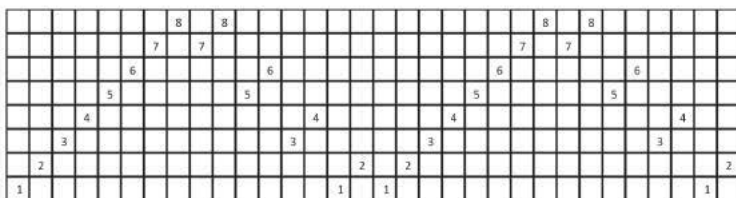


Chuymanaka salta jamuqata.

Sawuri kullakanakaxa jasakwa sawuyasirinakana chuymapaxa yatiña sasawa sapxi, khiti sawuyasiri kullakatixa jayrachi ukkhaxa janiwa jank'asa sawutapaxa jaqstkaspati sapxiwa; q'apha sawuyasiri kullakanakana sawutapaxa makhirakiwa jaqstaraki sapxarakiwa.

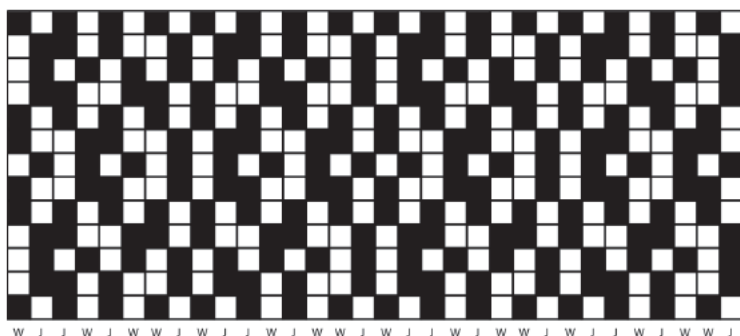
## Illawa

Chuymanaka saltaxa kimsaqallqu kasta illawani sawutawa, sapa kasta illawaxa pusi kutikama apnaqatawa.



## Sawuta

Chuymanaka saltaxa kimsaqallqu chinumpita tunka kimsani qipampita sawutawa, kimsaqallqu chinutxa chikataxa janq'u samini asi ch'ankhawa, yaqha chikatasti wila samini asi ch'ankharakiwa, ukhamatwa wilata "W" qalltasina janq'u "J" tilata asi ch'ankhampi wakt'ayasina sawutawa.



## Takxata

Kimsaqallqu kasta illawanakawa uñt'ata, ukatwa sawuñataki kimsaqallqu takxata wakisirakispa.

1		3		5		7	
	2	3		5			8
	2		4		6		8
	2	3			6	7	
1		3		5		7	
1			4	5			8
	2		4		6		8
1			4	5			8
1		3		5		7	
	2	3			6	7	
	2		4		6		8
	2	3		5			8
1		3		5		7	

## CHACHA - WARMI

Qarqapata ayllunxa chacha jaqi saltxa awayu, t'isnu, istalla, tari ukhamaraki inkhuña sawutanakaruwa waraqata, aka sawutanakanxa janiwa chacha saltaki uñjaskiti, ukhamarusa janirakiwa warmi saltaki utjkarakispati jani ukasti chacha-warmipuniwa kuna sawutanakansa waraqataraki.

Chacha - warmi saltaxa jaqiruwa uñanchayi, kunalaykutixa aymara saranakasanxa janiwa sapa chacha sapa warmisa jaqikiti, kunapachatixa maya chachampi warmimpi mayaruki tukuwayxapxi ukkhawa jaqichata (*jaqi*) sutimpi uñt'ataxi, ukampirusa khithinakatixa aylluna lurañanaka saranakaparjama phuqhawayxapxi uka jilata kullakanakawa suma phuqhata jaqipxi.



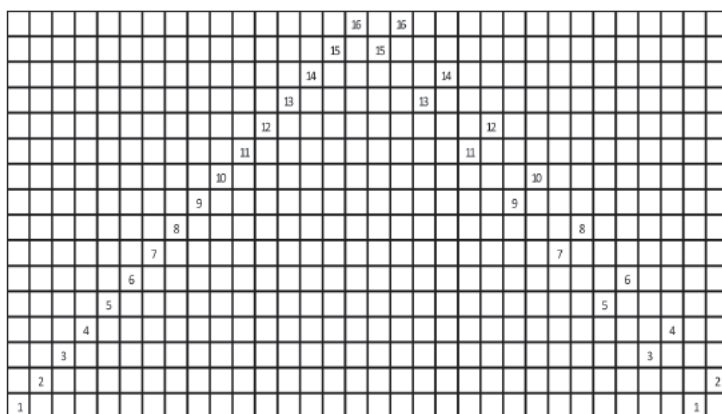
T'isnuru chacha - warmi salta sawuta.



Chacha - warmi salta jamuqata.

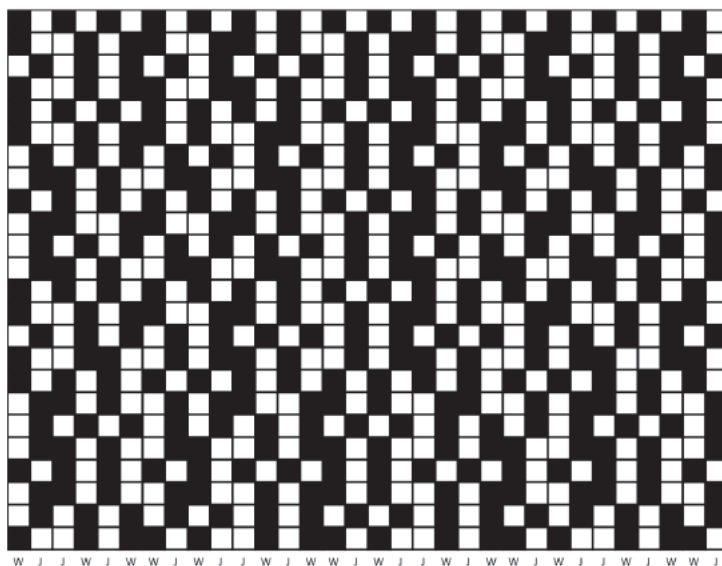
### Chacha salta illawa

Chacha saltaxa tunka suxtani kasta illawani sawutawa, sapa kasta illawaxa paya kutikama apnaqatawa.



## Chacha salta sawuta

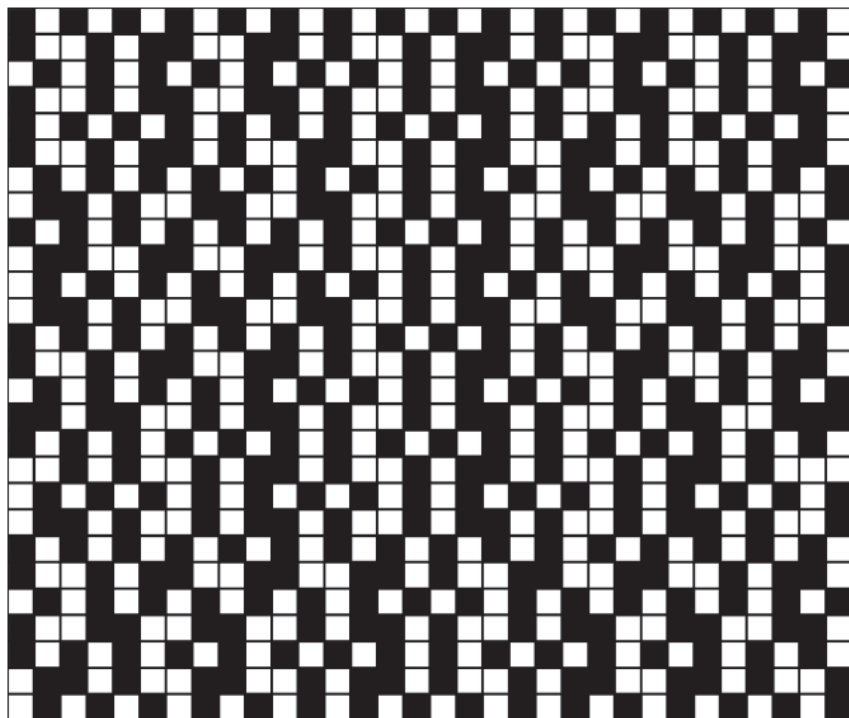
Chacha saltaxa kimsaqallqu chinumpita paya tunka pusini qipampita sawutawa, kimsaqallqu chinutxa chikataxa janq'u samini asi ch'ankhawa, yaqha chikatasti wila samini asi ch'ankharakiwa, ukhamatwa wilata "W" qalltasina janq'u "J" tilata asi ch'ankhampi wakt'ayasina sawutawa.





## Warmi salta sawuta

Warmi saltaxa kimsaqallqu chinumpita paya tunka paqallquni qipampita sawutawa.



W J J W J W W J W J J W J W W J W J J W J W W J W J J W J W W J

## Warmi salta takxata

Chacha saltjama tunka suxtani kasta illawanakawa uñt'ata, ukatwa tunka suxtani takxatampi uñacht'ayata.

1		3		5		7		9		11		13		15	
1			4		6	7			10	11		13			16
	2		4		6		8		10		12		14		16
1			4		6	7			10	11		13			16
1		3		5		7		9		11		13		15	
1			4		6	7		9			12	13			16
	2		4		6		8		10		12		14		16
	2	3		5			8	9			12	13			16
1		3		5		7		9		11		13		15	
	2	3			6	7			10	11		13			16
	2		4		6		8		10		12		14		16
	2	3		5			8	9			12	13			16
1		3		5		7		9		11		13		15	
1			4		6	7			10	11		13			16
	2		4		6		8		10		12		14		16
1	2		4	5			8		10	11		13			16
1		3		5		7		9		11		13		15	
		3		5			8		10	11		13			16
	2		4		6		8		10		12		14		16
	2	3		5			8	9		10	11		13		16
1		3		5		7		9		11		13		15	
1			4		6	7			10			13		14	15
	2		4		6		8		10		12		14		16
1			4	5			8	9			12		14	15	
1		3		5		7		9		11		13		15	
	2	3		5			8	9			12		14	15	
	2		4		6		8		10		12		14		16

## SIWARA KALLCHA

Qarqapata ayllunxa siwara kallcha saltxa awayu ukhamaraki t'isnu sawutanakaruwa sawupxi. Siwara juyra achuxa suni uraqinakana achuri aliwa, Qarqapata aylluna jakiri jaqinakaxa uywa manq'atakiwa sirawa yapuchapxaraki.

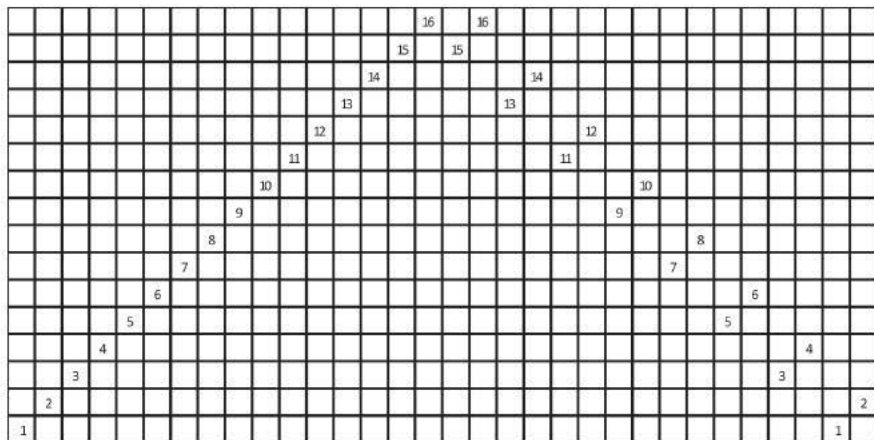
Llamayu phaxsinwa yapuchirinakaxa siwarxa apthapisina pachpa yapu taypiru jani achakunaka t'uruñapataki sayt'atatkama challcharxapxaraki, ukatxa kunapachatixa suma wañsutaxi uka pachawa pachpa yapuna jawq'apxaraki.





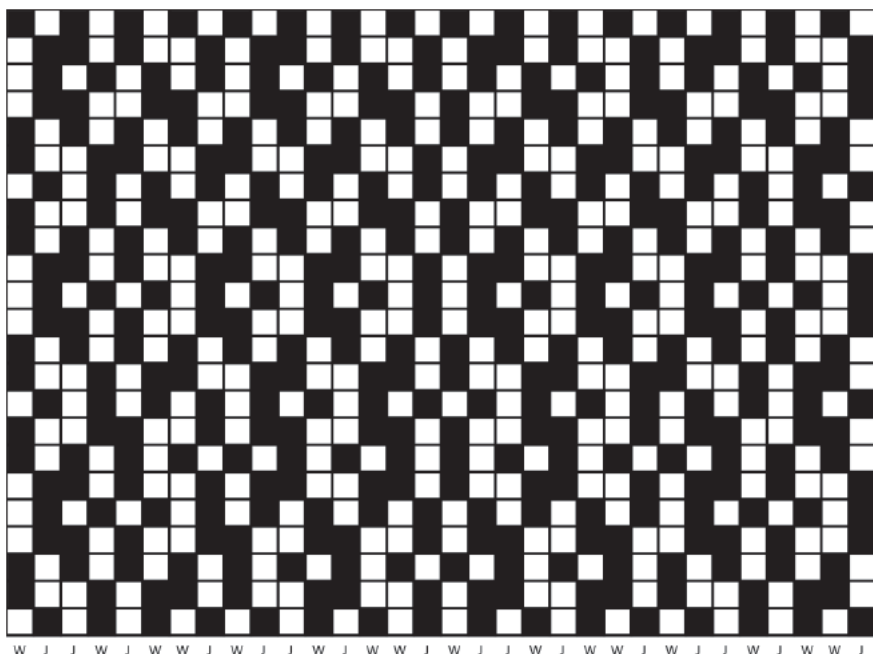
Siwara kallcha salta jamuqata.

Siwara saltaxa tunka suxtani kasta illawani sawutawa, sapa kasta illawaxa paya kutikama apnaqatawa.



## Sawuta

Siwara saltaxa kimsaqallqu chinumpita paya tunka kimsani qipampita sawutawa, kimsaqallqu chinutxa chikataxa janq'u samini asi ch'ankhawa, yaqha chikatasti wila samini asi ch'ankharakiwa, ukhamatwa wilata "W" qalltasina janq'u "J" tilata asi ch'ankhampi wakt'ayasina sawutawa.



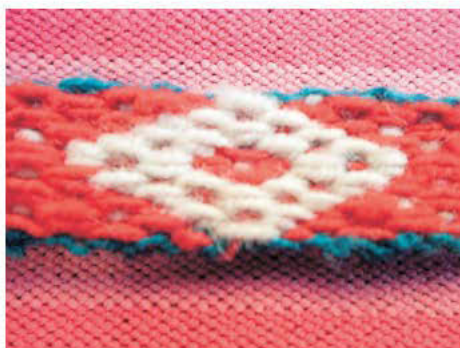
## Takxata

Siwara saltanxa tunka suxtani kasta illawanakawa uñt'ata, ukatwa tunka suxtani takxatampi uñacht'ayata.

1		3		5		7		9		11		13		15	
	2	3		5			8		10	11		13			16
		2		4		6		8		10		12		14	16
		2	3			6	7			10	11			14	15
1		3		5		7		9		11		13		15	
1			4	5			8	9			12	13			16
	2		4		6		8		10		12		14		16
1			4		6	7			10	11			14	15	
1		3		5		7		9		11		13		15	
	2	3		5			8	9			12	13			16
		2		4		6		8		10		12		14	16
		2	3		5			8	9			12	13		16
1		3		5		7		9		11		13		15	
1			4		6	7			10	11			14	15	
	2		4		6		8		10		12		14		16
1			4	5			8		10	11			14	15	
1		3		5		7		9		11		13		15	
		2	3		5			8	10	11			14	15	
	2		4		6		8		10		12		14		16
	2	3		5			8	9			12	13			16
1		3		5		7		9		11		13		15	
1			4		6	7			10	11			14	15	
	2		4		6		8		10		12		14		16
1			4	5			8		10	11			14	15	
1		3		5		7		9		11		13		15	
		2	3		5			8	10	11			14	15	
	2		4		6		8		10		12		14		16
	2	3		5			8	9			12	13			16
1		3		5		7		9		11		13		15	
1			4		6	7		9			12	13			16
	2		4		6		8		10		12		14		16

## JACH'A P'UYU

Jach'a p'uyu saltaxa awayu, tari ukhamaraki t'isnu sawutanakaruwa sawuta, ukampirusa wak'ansa sawutarakiwa.



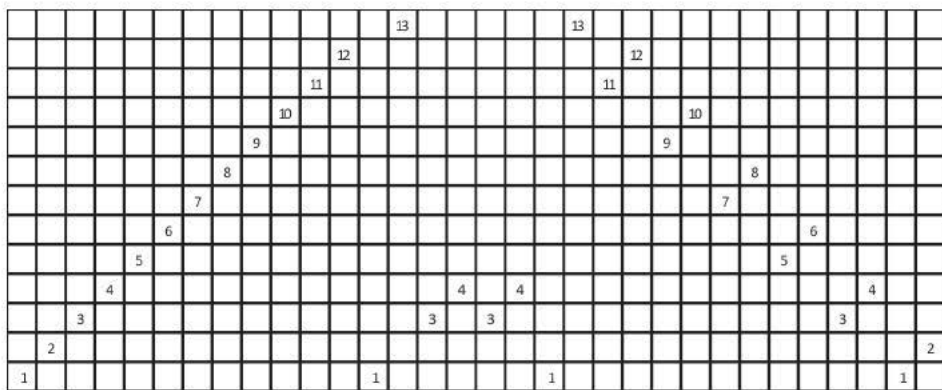
T'isnuru jach'a p'uyu salta sawuta.



Jach'a p'uyu salta jamuqata.

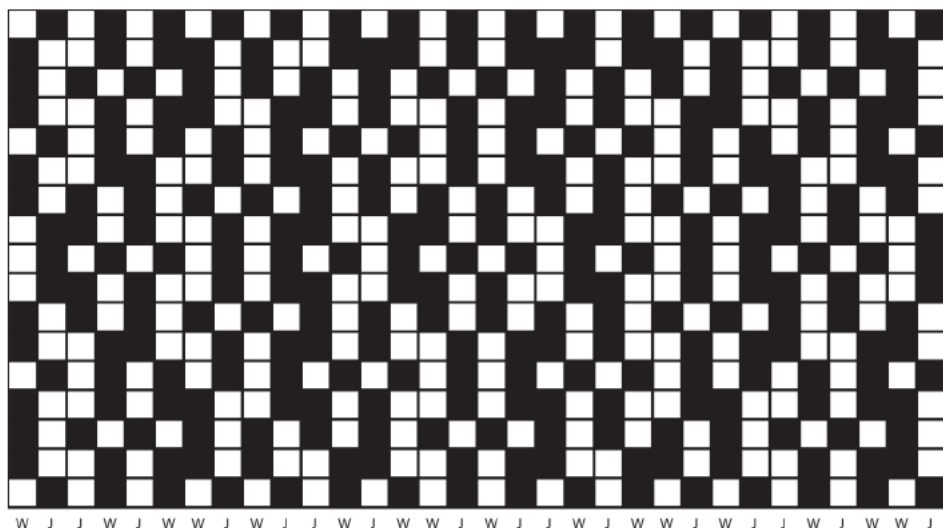
## Illawa

Jach'a p'uyu saltaxa tunka kimsani kasta illawani sawutawa, sapa kasta illawaxa paya kutikama apnaqatawa, 1ri, 3ri ukhamaraki 4ri kasta illawanakakiwa pusi kutikama apnaqata.



## Sawuta

Jach'a p'uyu saltaxa kimsaqallqu chinumpita tunka paqallquni qipampita sawutawa, kimsaqallqu chinutxa chikataxa janq'u samini asi ch'ankhawa, yaqha chikatasti wila samini asi ch'ankharakiwa, ukhamatwa wilata "W" qalltasina janq'u "J" tilata asi ch'ankhampi wakt'ayasina sawutawa.



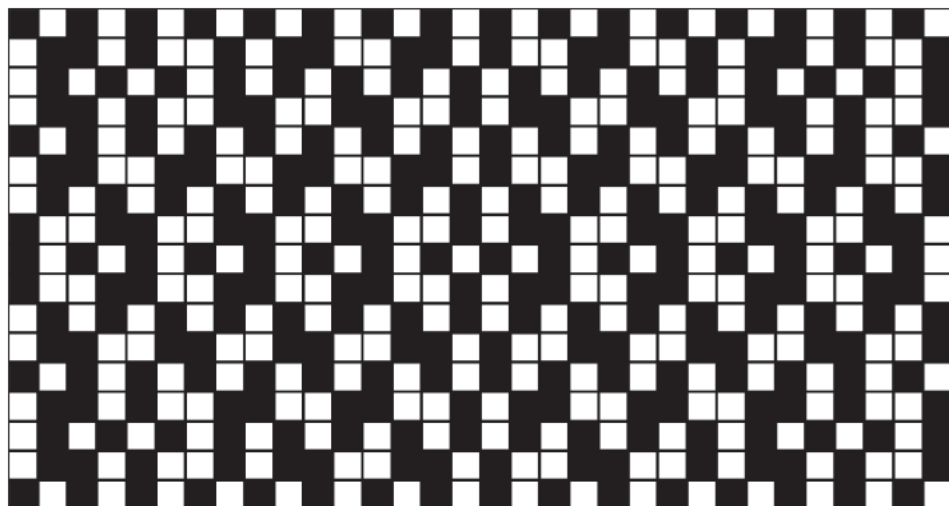
## Takxata

Jach'a p'uyu saltanxa tunka kimsani kasta illawanakawa uñt'ata, ukatwa tunka kimsani takxatampi uñacht'ayata.

	2	4		6		8		10		12	13
1		4		6	7		9			12	13
1		3		5		7		9		11	
1			4		6	7			10	11	
	2		4		6		8		10		12
1			4	5			8		10	11	13
1		3		5		7		9		11	
	2	3		5			8		10	11	
	2		4		6		8		10		12
	2	3		5			8		10	11	
1		3		5		7		9		11	
1			4	5			8		10	11	13
	2		4		6		8		10		12
1			4		6	7			10	11	13
1		3		5		7		9		11	
1			4		6	7		9			12
	2		4		6		8		10		12



asi ch'ankhawa, yaqha chikatasti wila samini asi ch'ankharakiwa, ukhamatwa wilata "W" qalltasina janq'u "J" tilata asi ch'ankhampi wakt'ayasina sawutawa.



W J J W J W W J W J J W J W W J W J J W J W W J W J J W J W W J

## Takxata

Paya p'uyu saltanxa tunka payani kasta illawanakawa uñt'ata ukatwa tunka payani takxatampi uñacht'ayata.

1		3		5		7		9		11	
	2	3		5			8		10	11	
		2		4		6		8		10	12
		2	3		5			8	9		12
1		3			5		7		9		11
	2	3				6	7			10	11
		2		4		6		8		10	12
1			4	5				8	9		12
1		3		5		7		9		11	
1			4	5			8	9			12
	2		4		6		8		10		12
		2	3			6	7			10	11
1		3		5		7		9		11	
		2	3		5			8	9		12
		2		4		6		8		10	12
		2	3		5			8		10	11
1		3		5		7		9		11	



## PICHJALLA

Pichjalla saltaxa awayu, t'isnu ukhamaraki istalla sawutanakaruwa sawuta.



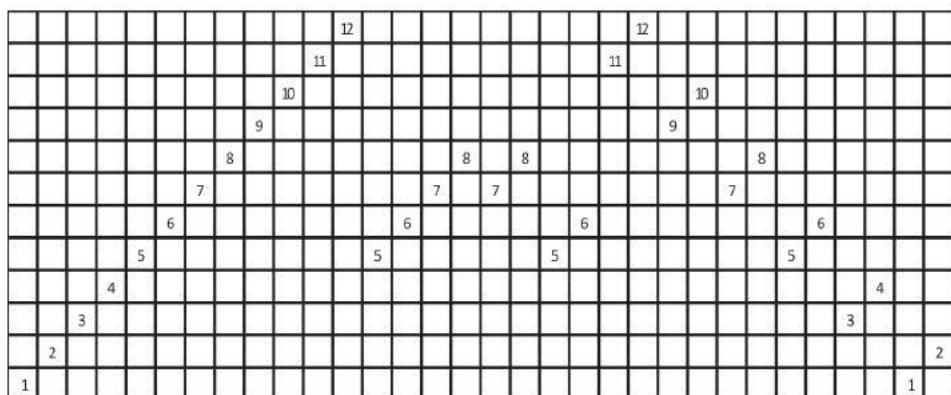
T'isnuru pichjalla salta sawuta.



Pichjalla salta jamuqata.

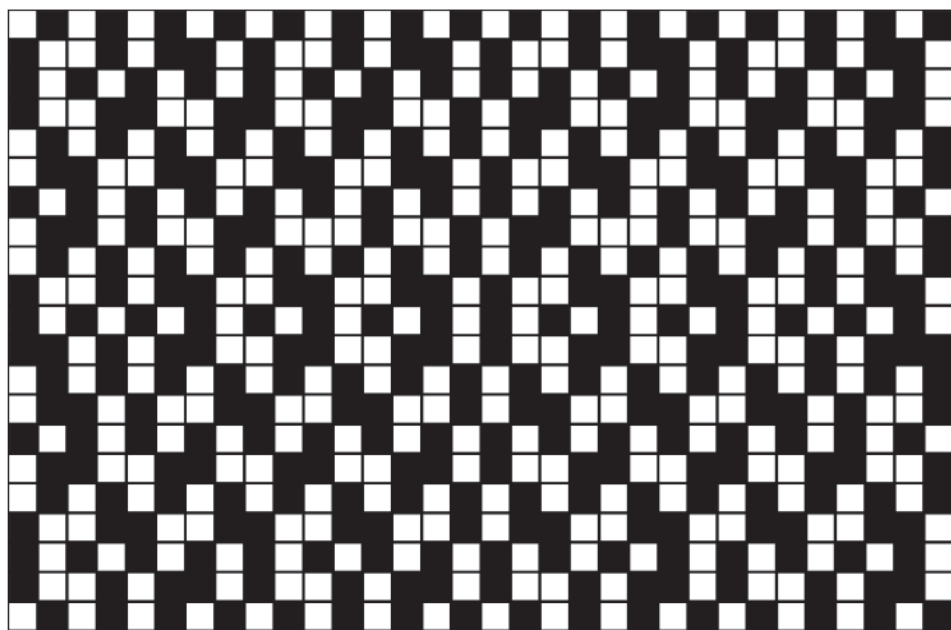
## Illawa

Pichjalla saltaxa tunka payani kasta illawani sawutawa, mayata pusikama, ukata llatunkata tunka payankamaxa payakamawa utji ukatxa phisqhirita kimsaqaallqukamaxa pusi kutikamawa utjaraki.



## Sawuta

Pichjalla saltaxa kimsaqallqu chinumpita paya tunka mayani qipampita sawutawa, kimsaqallqu chinutxa chikataxa janq'u samini asi ch'ankhawa, yaqha chikatasti ch'iyara samini asi ch'ankharakiwa, ukhamatwa ch'iyarata "C" qalltasina janq'u "J" tilata asi ch'ankhampi wakt'ayasina sawutawa.



C J J C J C C J C J J C J C C J C J J C J C C J C J J C J C C J

## Takxata

Pichjalla saltanxa tunka payani kasta illawanakawa uñt'ata, ukatwa tunka payani takxatampi uñacht'ayata.

	2		4		6		8		10		12
1			4		6	7		9			12
1		3		5		7		9		11	
1			4	5			8	9			12
	2		4		6		8		10		12
	2	3			6	7			10	11	
1		3		5		7		9		11	
	2	3		5			8	9			
	2		4		6		8		10		12
1			4		6	7			10	11	
1		3		5		7		9		11	
1	2		4		6	7			10	11	
	2		4		6		8		10		12
	2	3		5			8	9			12
1		3		5		7		9		11	
	2	3			6	7			10	11	
	2		4		6		8		10		12
1			4	5			8	9			12
1		3		5		7		9		11	
1			4		6	7		9			12
	2		4		6		8		10		12

## CHHAXCHHA PICHJALLA

Qarqapata ayllunxa sawurinakaxa chhaxchha pichjalla saltxa awayu, t'isnu ukhamaraki istalla sawutanakaruwa sawupxi.



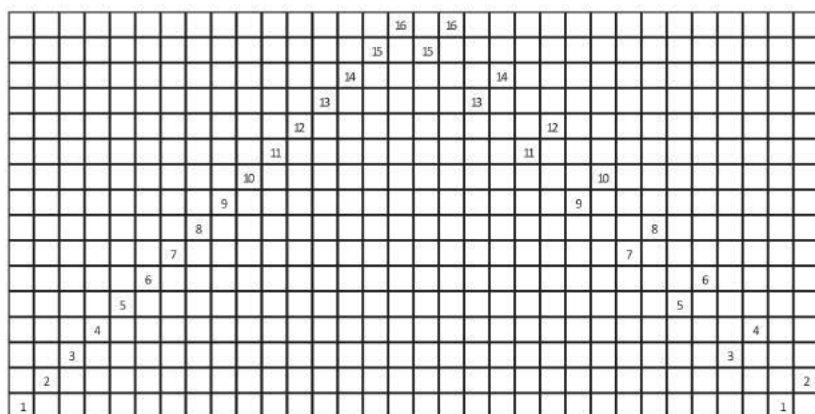
Chhaxchha pichjalla salta sawuta.



Chhaxchha pichjalla salta jamuqata.

## Illawa

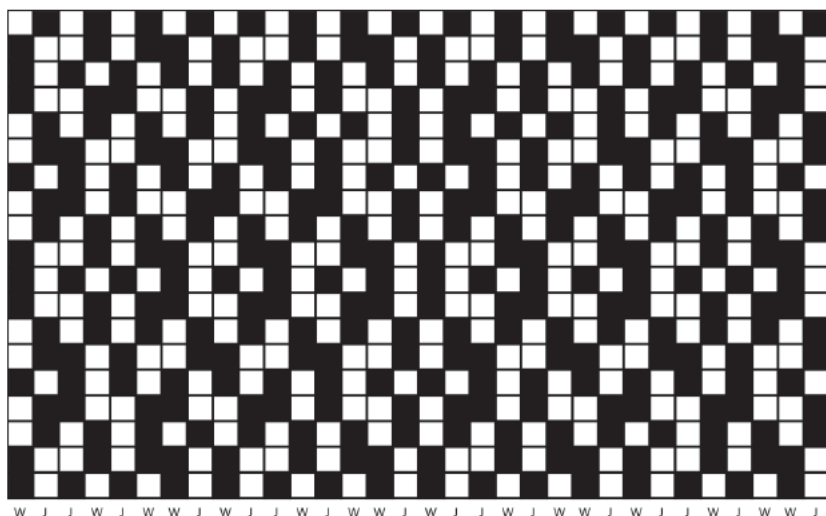
Chhaxchha pichjallaxa tunka suxtani kasta illawani sawutawa, sapa kasta illawaxa paya kutikamawa apnaqata.



## Sawuta

Chhaxchha pichjalla saltaxa kimsaqallqu chinumpita tunka llatunkani qipampita sawutawa, kimsaqallqu chinutxa chikataxa janq'u samini asi ch'ankhawa, yaqha chikatasti wila samini asi ch'ankharakiwa,

ukhamatwa wilata “W” qalltasina janq’u “J” tilata asi ch’ankhampi wakt’ayasina sawutawa.



## Takxata

Chhaxchha pichjalla saltanxa tunka suxtani kasta illawanakawa uñt’ata, ukatwa tunka suxtani takxatampi uñacht’ayata.

	2		4		6		8		10		12		14		16
1			4		6	7		9			12		14	15	
1		3		5		7		9		11		13		15	
			4	5			8		10	11		13			16
	2		4		6		8		10		12		14		16
	2	3			6	7			10	11		13			16
1		3		5		7		9		11		13		15	
	2	3		5			8	9			12	13			16
	2		4		6		8		10		12		14		16
1			4		6	7			10	11			14	15	
1		3		5		7		9		11		13		15	
1			4		6	7			10	11			14	15	
	2		4		6		8		10		12		14		16
	2	3		5			8	9			12	13			16
1		3		5		7		9		11		13		15	
	2	3			6	7			10	11		13			16
	2		4		6		8		10		12		14		16
1			4		6	7		9			12		14	15	
1		3		5		7		9		11		13		15	

## TIJIRITA

Qarqapata ayllunxa tijirita saltaxa istalla, awayu, t'isnu, wallqhipu, ch'uspa ukhamaraki inkhuña sawutanakaru sawutawa.



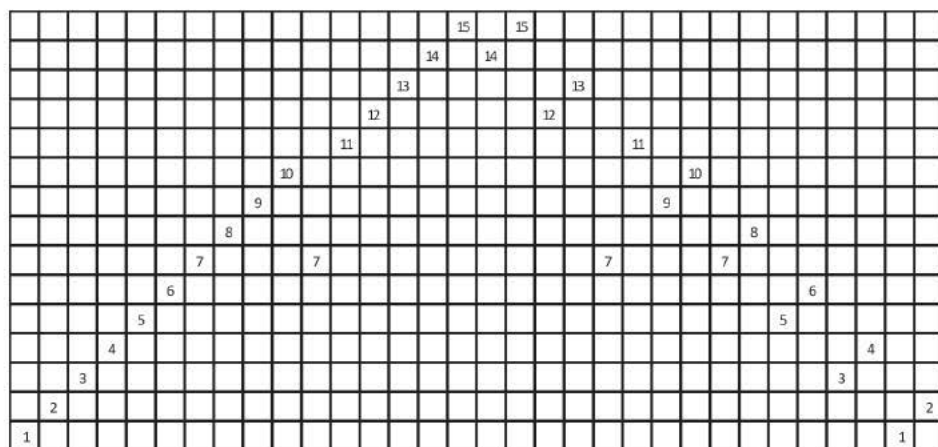
T'isnuru tijirita salta sawuta.



Tijirita salta jamuqata.

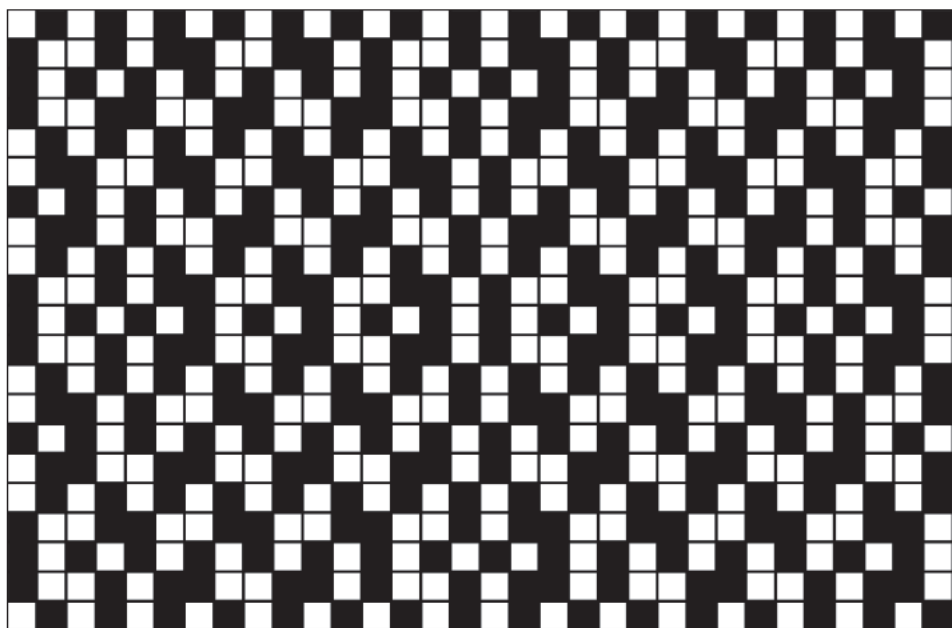
## Illawa

Tijirita saltaxa tunka phisqhani illawani sawutawa, sapa kasta illawaxa paya kutikamawa apnaqata, ukatxa paqallquri illawakiwa pusi kuti apnaqata.



## Sawuta

Tijirita saltaxa kimsaqallqu chinumpita paya tunka mayani qipampita sawutawa, kimsaqallqu chinutxa chikataxa janq'u samini asi ch'ankhawa, yaqha chikatasti wila samini asi ch'ankharakiwa, ukhamatwa wilata "W" qalltasina janq'u "J" tilata asi ch'ankhampi wakt'ayasina sawutawa.



W J J W J W W J W J J W J W W J W J J W J W W J W J J W J W W J



## Takxata

Tijirita saltanxa tunka phisqhani kasta illawanakawa uñt'ata, ukatwa tunka phisqhani takxatampi uñacht'ayata.

	2		4		6		8		10	11		13		15
1			4		6	7			10		12			15
1		3		5		7		9			12		14	
1			4	5			8	9		11	12			15
	2		4		6		8		10	11		13		15
	2	3			6	7			10			13	14	
1		3		5		7		9			12		14	
	2	3		5			8	9		11	12			15
	2		4		6		8		10	11		13		15
1			4		6	7			10			13	14	
1		3		5		7		9			12		14	
1			4		6	7			10			13	14	
	2		4		6		8		10	11		13		15
	2	3		5			8	9		11	12			15
1		3		5		7		9			12		14	
	2	3			6	7			10			13	14	
	2		4		6		8		10	11		13		15
1			4	5			8	9		11	12			15
1		3		5		7		9			12		14	
1			4		6	7			10		12			15
	2		4		6		8		10	11		13		15

## Q'IWI CHUNTA

Qarqapata aylunxa sawuri kullakanakaxa q'iwi chunta saltxa awayu, t'isnu, tari ukhamaraki inkhuña sawutanakaruwa sawupxi.



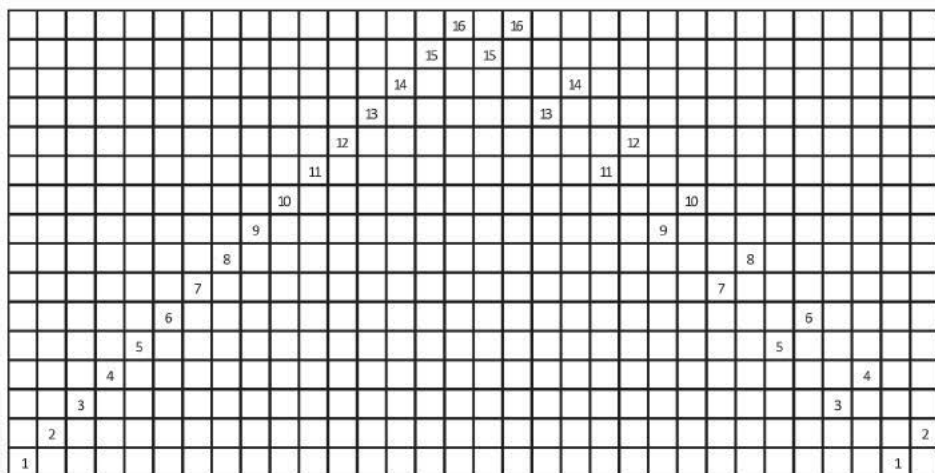
T'isnuru q'iwi chunta salta sawuta.



Q'iwi chunta salta jamuqata.

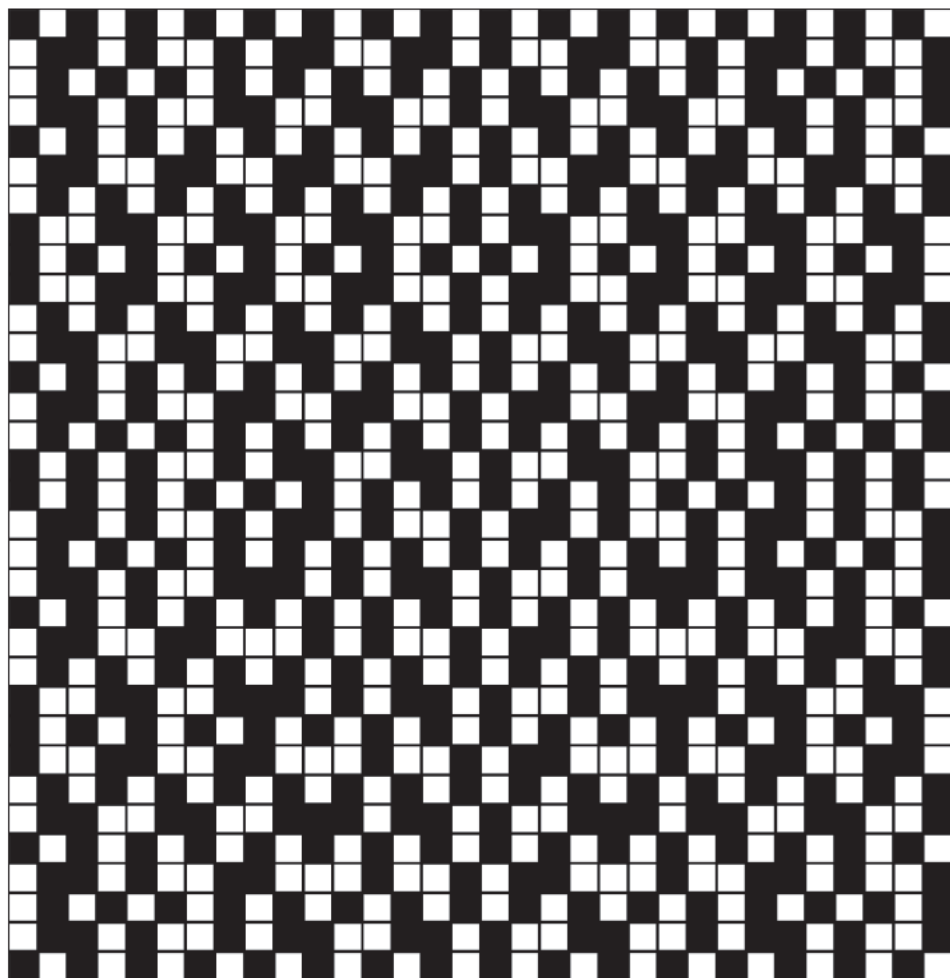
## Illawa

Q'iwi chunta saltaxa tunka suxtani illawani sawutawa, sapa kasta illawaxa paya kutikamawa apnaqata.



## Sawuta

Q'iwi chunta saltaxa kimsaqallqu chinumpita kimsa tunka kimsani qipampita sawutawa, kimsaqallqu chinutxa chikataxa janq'u samini asi ch'ankhawa, yaqha chikatasti wila samini asi ch'ankharakiwa, ukhamatwa wilata "W" qalltasina janq'u "J" tilata asi ch'ankhampi wakt'ayasina sawutawa.



W J J W J W W J W J J W J W W J W J J W J W W J W J J W J W W J

# Takxata

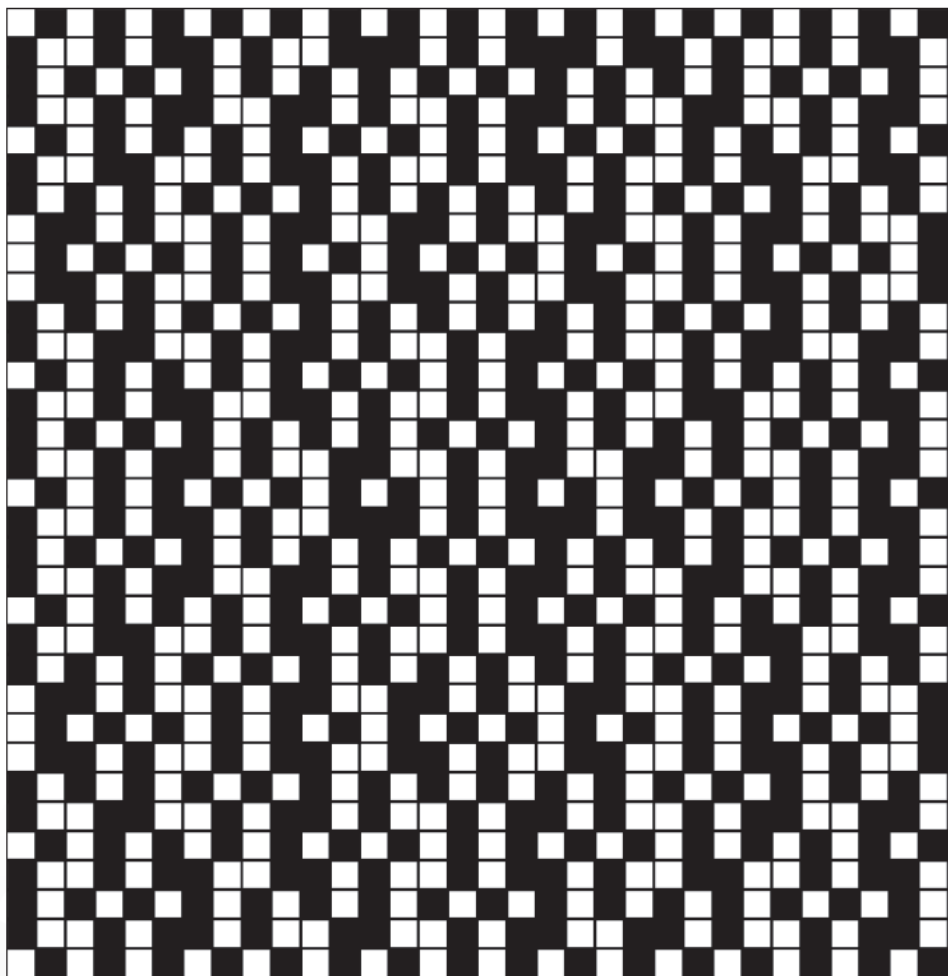
Q'iwí chunta saltanxa tunka suxtani kasta illawanakawa uñt'ata,  
ukatwa tunka suxtani takxatampi uñacht'ayata.

1		3		5		7		9		11		13		15	
	2	3		5		8		10		11		14		15	
	2		4		6		8		10		12		14		16
	2	3		5		8	9			12	13				16
1		3		5		7		9		11		13		15	
	2	3			6	7			10	11			14	15	
	2		4		6		8		10		12		14		16
1			4	5			8	9			12	13			16
1		3		5		7		9		11		13		15	
1			4	5			8	9			12	13			16
	2		4		6		8		10		12		14		16
	2	3			6	7			10	11			14	15	
1		3		5		7		9		11		13		15	
	2	3		5			8	9			12	13			16
	2		4		6		8		10		12		14		16
1		3		5			8		10	11			14	15	
	2	3			6	7			10	11			14	15	
1		3		5		7		9		11		13		15	
	2	3			6	7				11		13			16
	2		4		6		8		10		12		14		16
1		3		5			8	9			12	13			16
	2	3			6	7			10	11			14	15	
1		3		5		7		9		11		13		15	
	2	3			6	7				11		13			16
	2		4		6		8		10		12		14		16
1			4	5			8	9	10		12		14	15	
1		3		5		7		9		11		13		15	
1			4	5			8	9				13			16
	2		4		6		8		10		12		14		16
	2	3			6	7			10	11	12		14	15	
1		3		5		7		9		11		13		15	
	2	3		5			8	9				13			16
	2		4		6		8		10		12		14		16
	2	3			6	7			10	11			14	15	
1		3		5		7		9		11		13		15	
	2	3			6	7						13			16
	2		4		6		8		10		12		14		16
	2	3		5			8		10	11			14	15	
1		3		5		7		9		11		13		15	



## Sawuta

Nayranaka saltaxa kimsaqallqu chinumpita kimsa tunka kimsani qipampita sawutawa, kimsaqallqu chinutxa chikataxa janq'u samini asi ch'ankhawa, yaqha chikatasti wila samini asi ch'ankharakiwa, ukhamatwa wilata "W" qalltasina janq'u "J" tilata asi ch'ankhampi wakt'ayasina sawutawa.



W J J W W W J W J J W J W W J W J J W J W W J W J J W J W J

# Takxata

Nayranaka saltanxa tunka phisqhani kasta illawanakawa uñt'ata, ukatwa tunka phisqhani takxatampi uñacht'ayata.

	2		4		6		8		10		12		14	
1			4		6	7		9			12	13	14	
1		3		5		7		9		11		13		15
1			4		6	7			10	11		13		
	2		4		6		8		10		12		14	
1			4	5			8		10	11		13		
1		3		5		7		9		11		13		15
	2	3		5			8		10	11			14	15
	2		4		6		8		10		12		14	
	2	3		5			8		10	11			14	15
1		3		5		7		9		11		13		15
1			4	5			8		10	11		13		
	2		4		6		8		10		12		14	
1			4		6	7			10	11		13		
1		3		5		7		9		11		13		15
1			4		6	7		9			12	13		
	2		4		6		8		10		12		14	
1			4		6	7		9			12	13	14	
1		3		5		7		9		11		13		15
1			4		6	7			10	11		13		
	2		4		6		8		10		12		14	
1			4		6	7		9			12	13	14	
1		3		5		7		9		11		13		15
1			4		6	7			10	11		13		
	2		4		6		8		10		12		14	
1			4		6	7		9			12	13	14	
1		3		5		7		9		11		13		15
	2	3		5			8		10	11			14	15
	2		4		6		8		10		12		14	
	2	3		5			8		10	11			14	15
1		3		5		7		9		11		13		15
1			4	5			8		10	11		13		
	2		4		6		8		10		12		14	
1			4		6	7			10	11		13		
1		3		5		7		9		11		13		15
1			4		6	7		9			12	13		
	2		4		6		8		10		12		14	



# CHUNTA

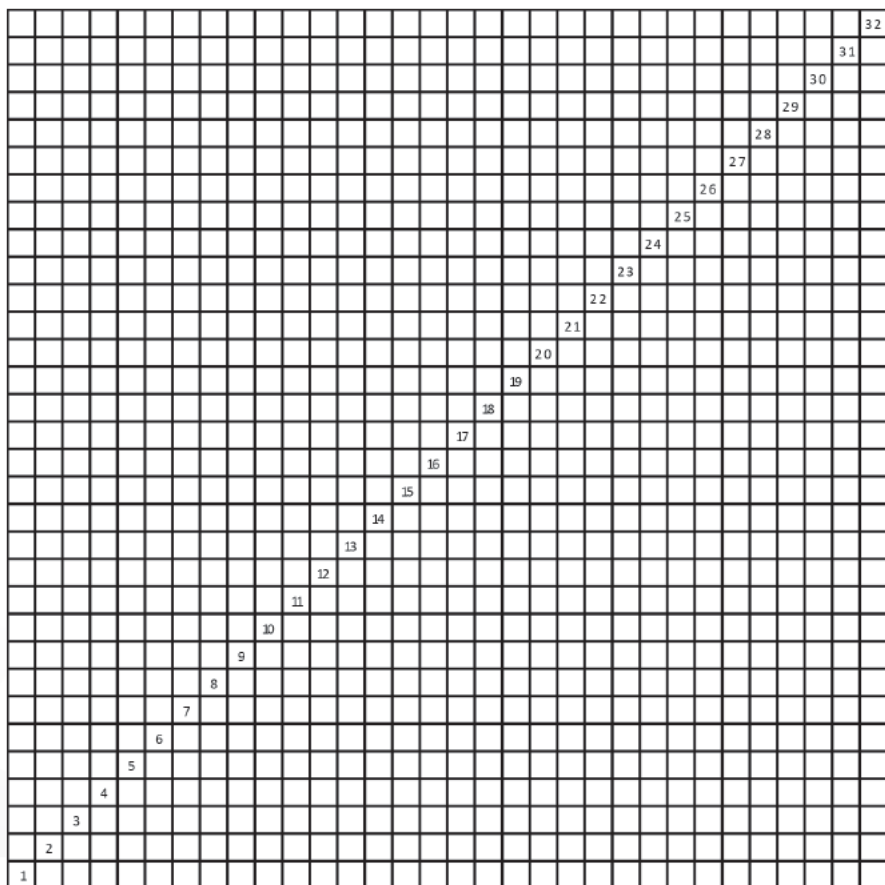
Qarqapata ayllunxa chunta saltaxa awayu, t'isnu,  
tari ukhamaraki inkhuña sawutanakana sawutawa.  
Chuntampixa taqpacha yapunakwa yapuchapxaraki,  
jilpachaxa ch'uqi qawañataki ukhamaraki  
waykatañatakiwa apnaqata.

## Illawa

Chunta saltaxa kimsa tunka payani illawani  
sawutawa.

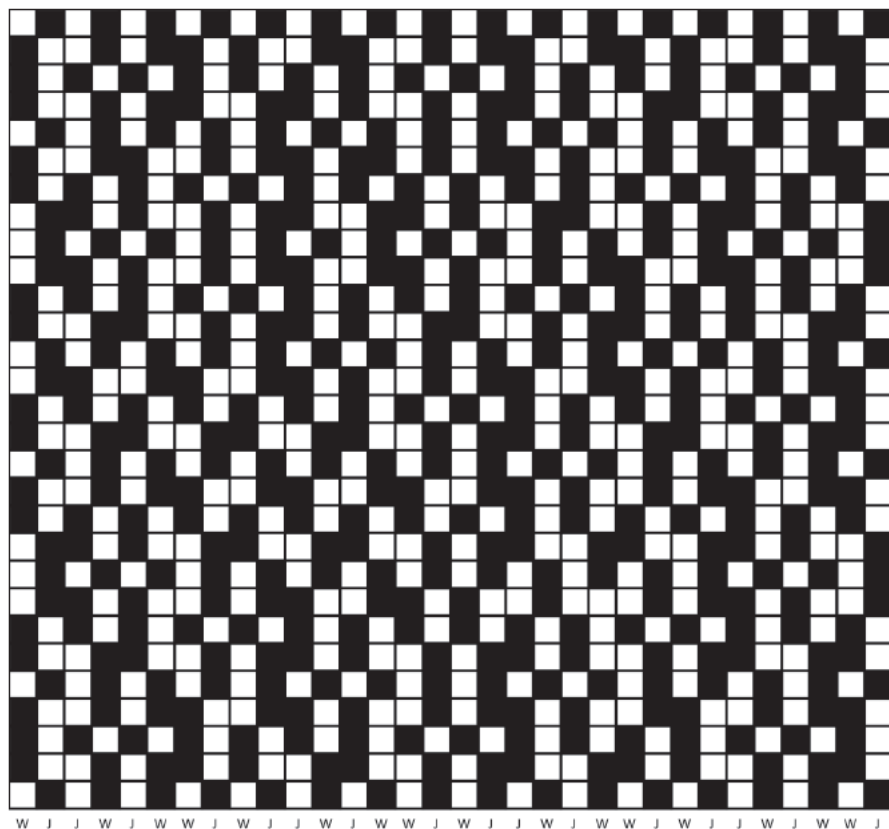


Chunta salta jamuqata.



## Sawuta

Chunta saltaxa kimsaqallqu chinumpita paya tunka llatunkani qipampita sawutawa, kimsaqallqu chinutxa chikataxa janq'u samini asi ch'ankhawa, yaqha chikatasti wila samini asi ch'ankharakiwa, ukhamatwa wilata "W" qalltasina janq'u "J" tilata asi ch'ankhampi wakt'ayasina sawutawa.



## Takxata

Chunta saltanxa kimsa tunka payani kasta illawanakawa uñt'ata ukatwa kimsa tunka payani takxatampi uñacht'ayata.

	2	4	6	8	10	12	14	16	18	20	22	24	26	28	30	32							
1		4	6	7	9		12	13		16	18	19		22	23	25		28	30	31			
1	3		5	7	9		11	13		15	17	19		21	23	25	27	29	31				
1		4	6	7		10	11	13		16	18	19		21		24	25		28	30	31		
	2	4	6	8	10	12	14	16	18	20	22	24	26	28	30						32		
1		4	5		8	10	11	13	14	16	18	19		21		24	26	27		30	31		
1	3		5	7	9		11	13		15	17	19		21	23	25	27	29	31				
	2	3		5		8	10	11		14	15	17		20	21		24	26	27	29	32		
	2	4		6	8	10	12	14	16	18	20	22	24	26	28	30					32		
	2	3		5		8	10	11		14	15	17		20	22	23		26	27	29	32		
1	3		5	7	9		11	13		15	17	19		21	23	25	27	29	31				
1		4	5		8	10	11	13		16	17		20	22	23		25	27		30	31		
	2	4		6	8	10	12	14	16	18	20	22	24	26	28	30					32		
	2	3		6	7		10	11	13		16	18	19		22	23	25		28	30	31		
1	3		5	7	9		11	13		15	17	19		21	23	25	27	29	31				
1		4	5		8	9		12	13		16	18	19		21		24	25		28	30	31	
	2	4		6	8		10	12	14	16	18	20	22	24	26	28	30				32		
1		4		6	7		10	11		14	15		18	19		21		24	26	27	30	31	
1	3		5	7	9		11	13		15	17	19		21	23	25	27	29	31				
	2	3	5		8	9		12	13		16	18	19		22	23		26	27	29	32		
	2	4		6	8	10	12	14	16	18	20	22	24	26	28	30	32						
	2	3		5		8	10	11		14	15	17		20		24	26	27	29		32		
1	3		5	7	9		11	13		15	17	19		21	23	25	27	29	31				
1		4	5		8	10	11	13		16	18	19		21		24	26	27		30	31		
	2	4		6	8	10	12	14	16	18	20	22	24	26	28	30					32		
1		4		6	7		10	11		14	15		18	19		21		24	25		28	30	31
1	3		5	7	9		11	13		15	17	19		21	23	25	27	29	31				
	2	3	5		8	9		12	13		16	18	19		22	23		26	27	29	32		
	2	4		6	8	10	12	14	16	18	20	22	24	26	28	30	32						
	2	3		5		8	10	11		14	15	17		20		24	26	27	29		32		
1	3		5	7	9		11	13		15	17	19		21	23	25	27	29	31				
1		4	5		8	10	11	13		16	18	19		21		24	26	27		30	31		
	2	4		6	8	10	12	14	16	18	20	22	24	26	28	30					32		
1		4		6	7		10	11	13		16	18	19		21	24	25		28	30	31		
1	3		5	7	9		11	13		15	17	19		21	23	25	27	29	31				
1		4		6	7	9		12	13		16	18	19		22	23	25		28	30	31		
	2	4		6	8	10	12	14	16	18	20	22	24	26	28	30					32		

## JAMACH'I

Qarqapata aylluna ukhamaraki Chachapoya ayllunsa jamach'i saltaxa awayu, tari, t'isnu, qullqi wayaqa sawutanakaru sawutawa. Aka pachamama uraqinxá jiwasampi chikt'atawa kunaymani kasta jamach'inakaxa jakapxi, ukatwa sawuri kullakanakaxa uka jamach'inaka uñtasa sawutanakaru waraqt'apxi.



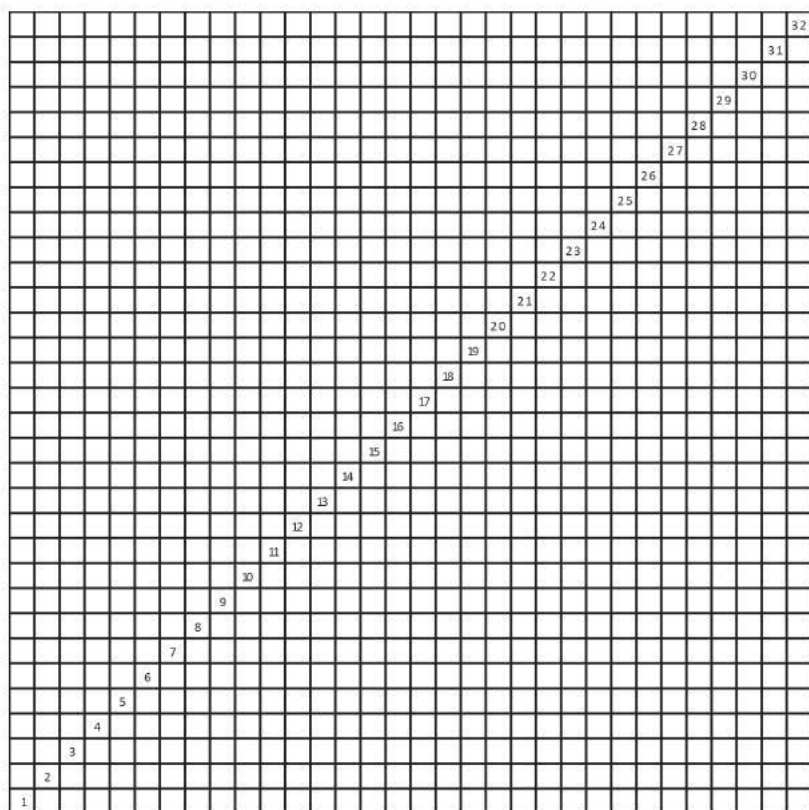
T'isnuru jamach'i salta sawuta.



Jamach'i salta jamuqata.

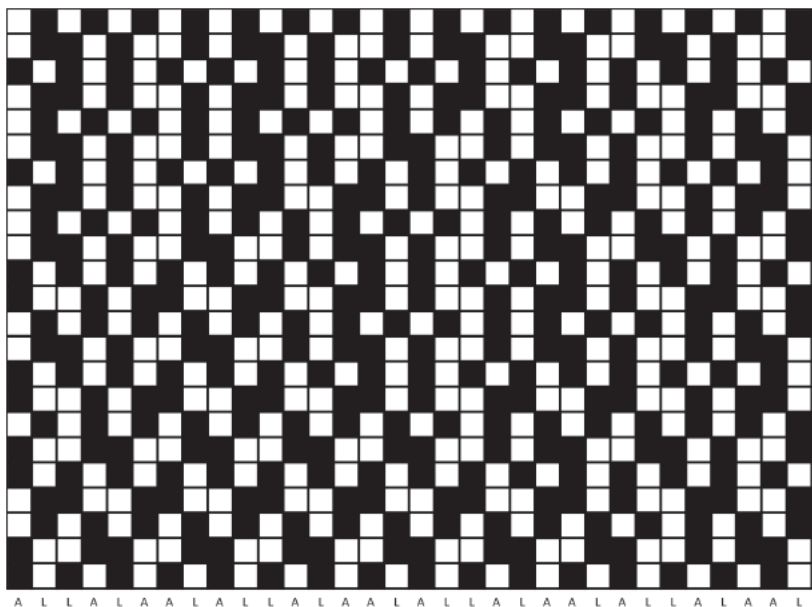
## Illawa

Jamach'i saltaxa kimsa tunka payani kasta illawani sawutawa.



## Sawuta

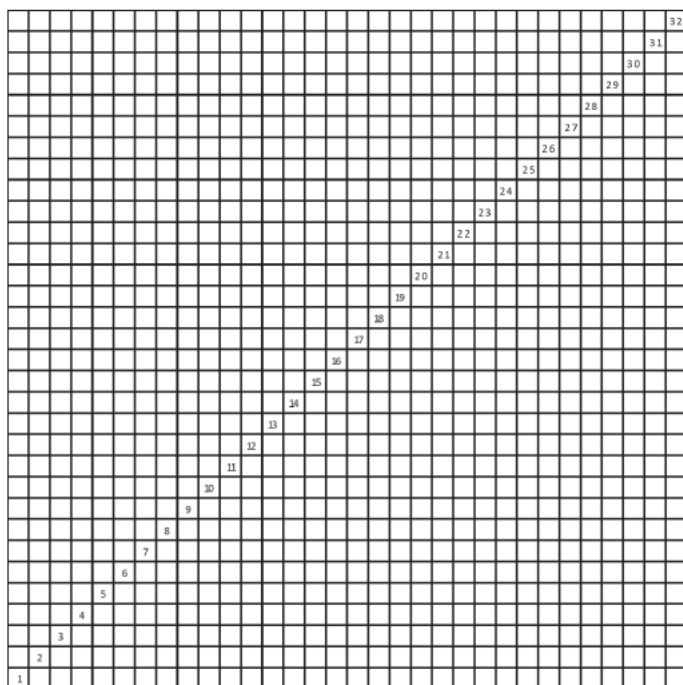
Jamach'i saltaxa kimsaqallqu chinumpita paya tunka kimsani qipampita sawutawa, kimsaqallqu chinutxa chikataxa anti samini asi ch'ankhawa, yaqha chikatasti larama samini asi ch'ankharakiwa, ukhamatwa antita "A" qalltasina larama "L" tilata asi ch'ankhampi wakt'ayasina sawutawa.





## Illawa

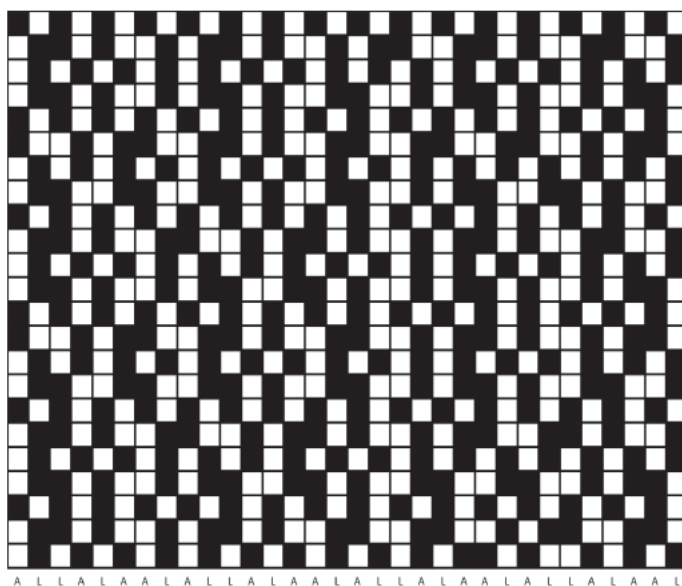
Wisk'acha saltaxa kimsa tunka payani kasta illawampiwa sawuta, janiwa mayasa kikipaki paya kuti utjkarakiti.



## Sawuta

Wisk'acha saltaxa kimsaqallqu chinumpita paya tunka kimsani qipampita sawutawa, kimsaqallqu chinutxa chikataxa anti samini asi ch'ankhawa, yaqha chikatasti larama samini asi ch'ankharakiwa, ukhamatwa antita "A" qalltasina larama "L" tilata asi ch'ankhampi wakt'ayasina sawutawa.





## Takxata

Wisk'acha saltanxa kimsa tunka payani kasta illawanakawa uñt'ata, ukatwa kimsa tunka payani takxatampi uñacht'ayata.

1	3	5	7	9	11	13	15	17	19	21	23	25	27	29	31													
2	3	5		8	10	11	13		16	18	19		22	23	25		28	29		32								
2		4	6	8	10		12		14		16		18		20		22		24		26		28		30		32	
2	3	5		8	10	11	13		16	17		20		22	23	25		28	30	31								
1	3	5	7	9	11	13	15	17	19	21	23	25	27	29	31													
1		4	6	7		10	11	13		16	17	20	21		24	25		28	30	31								
	2		4	6	8	10		12		14		16		18		20		22		24		26		28		30		32
	2	3		6	7		10	11	13		16	17		20		22	23		26	27	29		31				32	
1	3	5	7	9	11	13	15	17	19	21	23	25	27	29	31													
	2	3		5		8	9		12		14	15	17	20		22	23	25		28	29		31				32	
	2		4	6	8	10		12		14		16		18		20		22		24		26		28		30		32
	2	3		5		8	10	11		14	15	17		20		22	23	25		28		30	31					
1	3	5	7	9	11	13	15	17	19	21	23	25	27	29	31													
1		4	6	7		10	11	13		16	17	20		22	23	25		28	30	31								
	2		4	6	8	10		12		14		16		18		20		22		24		26		28		30		32
	2	3			6	7		10	11	13		16	17		20		22	23	25		28	29		31			32	
1	3	5	7	9	11	13	15	17	19	21	23	25	27	29	31													
	2	3		5		8	9		12		14	15	17	20		22	23	25		26	27	29		31			32	
	2		4	6	8	10		12		14		16		18		20		22		24		26		28		30		32
	2	3	5		8	10	11		14	15	17		20	21		24	25		28		30	31						
1	3	5	7	9	11	13	15	17	19	21	23	25	27	29	31													
	2	3		5		8	10	11	13		16	17		20	21		24	26	27		30	31					32	
	2		4	6	8	10		12		14		16		18		20		22		24		26		28		30		32
	2	3	5		8	10	11		14	15	17		20	21		24	25		28		30	31						
1	3	5	7	9	11	13	15	17	19	21	23	25	27	29	31													
	2	3		5		8	10	11	13		16	17		20	21		24	26	27		30	31					32	
	2		4	6	8	10		12		14		16		18		20		22	23	25		28	30				32	

## PANQARA

Qarqapata ayllunxa panqara saltaxa t'isnu, awayu, inkhuña ukhamaraki tari sawutanakanwa sawuta. Sank'ayu panqaraxa nayra sata, taypi sata jani ukaxa qhipa sata pachwa yatiyistu ukatwa wali askipuni sanq'ayu panqararu yäqaña.

Titi qaqä quta thiya iramanakanxa jiliri yatiñani jilata kullakanakaxa panqaranaka uñjasawa nayrati sataña wakisispa, taypicha jani ukaxa qhipakicha ukhama amuyt'asa satapxi. Jichha pacha wayna tawaqunakaxa kunapachasa juyranaka satxapxakiwa ukatwa jani askinjama achuyapkiti.



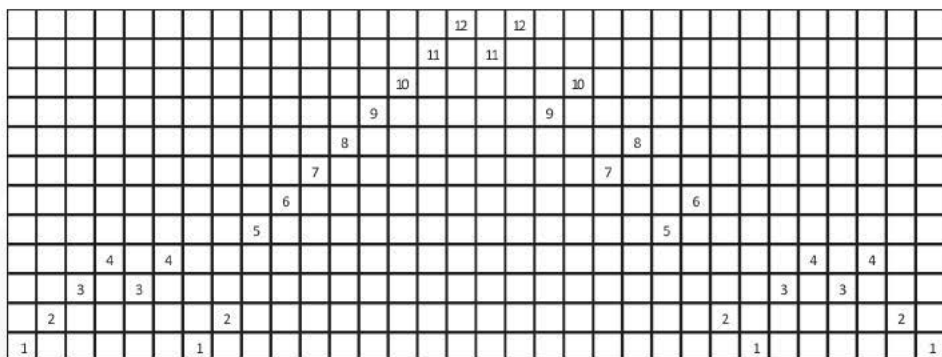
T'isnuru panqara salta sawuta.



Panqara salta jamuqata.

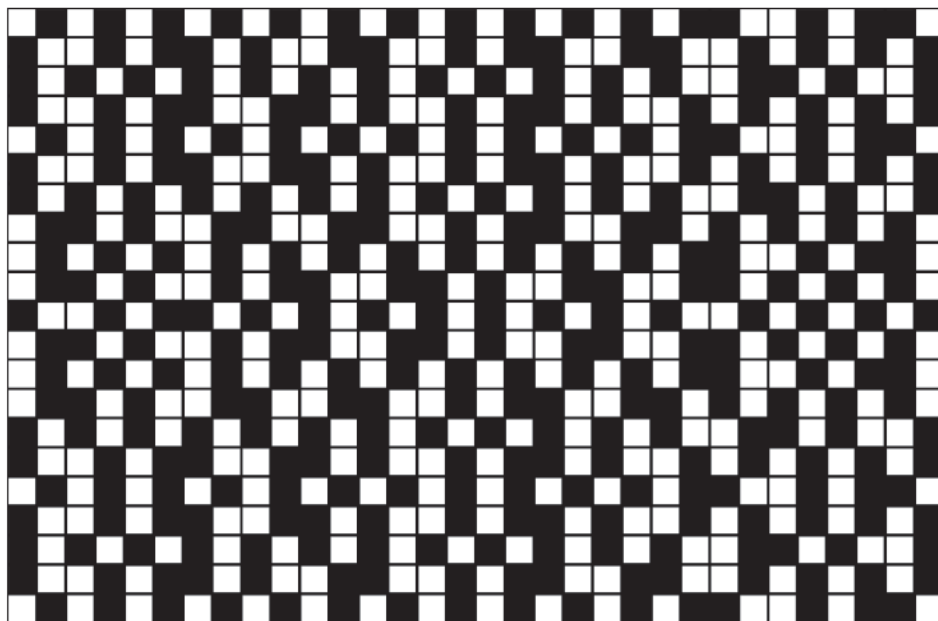
## Illawa

Panqara saltaxa tunka payani kasta illawampi sawutawa, mayata pusikamaxa pusi kutikamawa apnaqata, ukatxa tunka payankamaxa paya kutikamarakiwa apnaqata.



## Sawuta

Panqara saltaxa kimsaqallqu chinumpita paya tunka mayani qipampita sawutawa, chikataxa wila (W) samini asi ch'ankhawa, yaqha chikatasti janq'u (J) samini asi ch'ankharakiwa.



W J J W J W W J W J J W J W W J W J J W J W W J W J J W J W W J

## Takxata

Panqara saltanxa tunka payani kasta illawanakawa uñt'ata ukatwa tunka payani takxatampi uñacht'ayata.

	2		4		6		8		10		12
1			4	5			8	9			12
1		3		5		7		9		11	
1			4		6	7		9			12
	2		4		6		8		10		12
1			4		6	7		9			12
1		3		5		7		9		11	
	2	3		5			8	9			12
	2		4		6		8		10		12
	2	3			6	7			10	11	
1			4	5		7		9		11	
	2	3			6	7			10	11	
	2		4		6		8		10		12
	2	3		5			8	9			12
1		3		5		7		9		11	
1			4		6	7		9			12
	2		4		6		8		10		12
1			4		6	7		9			12
1		3		5		7		9		11	
1			4		6	7		9			12
	2		4		6		8		10		12
1			4		6	7		9			12
1		3		5		7		9		11	
1			4		6	7		9			12
1			4	5			8	9			12
	2		4		6		8		10		12

## UNQALLA CHHIWCHHI

Unqalla chhiwchhi saltaxa tari, awayu, inkhuña, t'isnu, qullqi wayaqa ukhamaraki wallqhipu sawutanakanwa sawuta. Unqalla chhiwchhinakaxa Titi qaqqa qutanwa jakapxi, janiwa chhiqhampi tuytaña atipkiti, uma manqharu mantaña yatipxaraki.



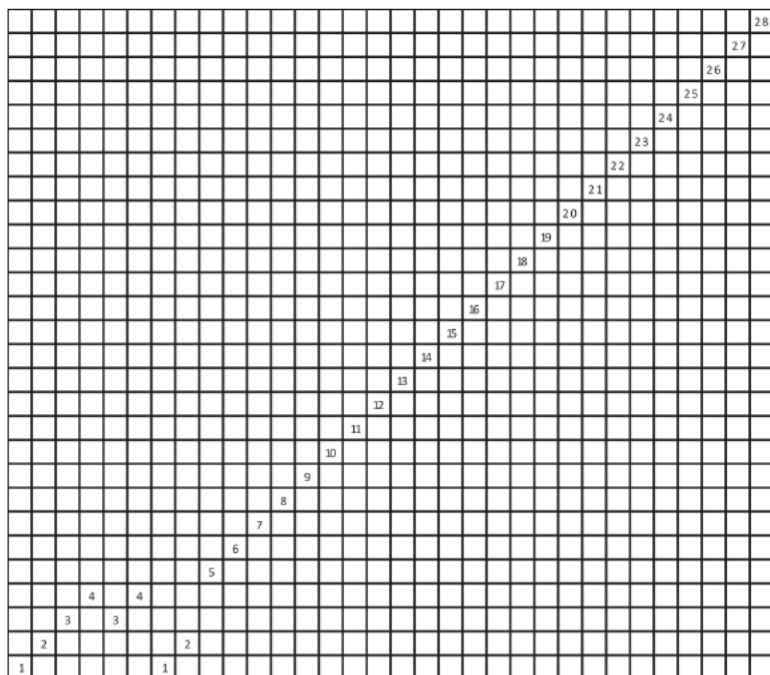
T'isnuru unqalla chhiwchhi salta sawuta.



Unqalla chhiwchhi salta jamuqata.

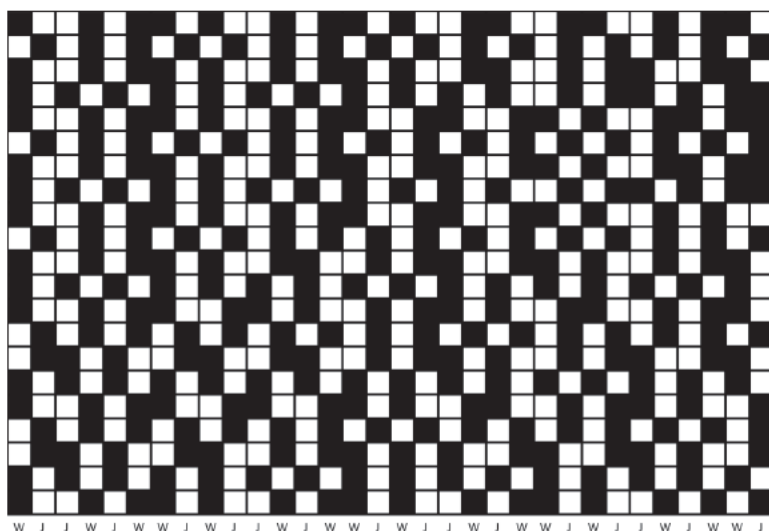
## Illawa

Unqalla chhiwchhi saltaxa paya tunka kimsaqallquni kasta illawampi sawutawa, mayirita pusirkamaxa paya kutikamawa apnaqata; ukatxa phisqhata paya tunka kimsaqallqunkamaxa maya kutikamakirakiwa apnaqata.



## Sawuta

Unqalla chhiwchhi saltaxa kimsaqallqu chinumpita paya tunka mayani qipampita sawutawa, kimsaqallqu chinutxa chikataxa wila samini asi ch'ankhawa, yaqha chikatasti janq'u samini asi ch'ankharakiwa, ukhamatwa wilata "W" qalltasina janq'u "J" tilata asi ch'ankhampi wakt'ayasina sawutawa.



## Takxata

Unqalla chhiwchhi saltanxa paya tunka kimsaqallquni kasta illawanakawa uñt'ata, ukatwa paya tunka kimsaqallqu takxatampi uñacht'ayata.

1		4	5		8	10	11	13		16	17		20	21		24	26	27		
	2	4		6	8	10	12		14	16	18		20	22		24	26	28		
1		4	5		8	10	11	13		16	17		20	22	23		26	27		
1	3	5		7	9		11	13		15	17		20	22	23		25	27	28	
	2	4	5		8	10	11		14	15		18	19		21		24	25	27	28
	2	4		6	8	10	12		14	16	18		20	22		24	26	28		
1		4	5		8	10	11		14	15		18	19		21		24	25	27	28
1	3	5		7	9		11	13		15	17		20	22	23		25	27	28	
1		4	5		8	10	11		14	15		18	19		21		24	26		
	2	4		6	8	10	12		14	16	18		20	22		24	26	28		
1		4	5		8	9		12	14	15		18	19		21		24	26	27	
1	3	5		7	9		11	13		15	17		19		21	23	25	27		
1		4		6	7	9		12	14	15	17		20	21		24	26	27		
	2	4		6	8	10	12		14	16	18		20	22		24	26	28		
	2	3	5		8	9		12	14	15	17		20	22	23		26	27		
1	3	5		7	9		11	13		15	17		19		21	23	25	27		
1		4		6	7		10	11	13		16	17		20	22	23		25	28	
	2	4		6	8	10	12		14	16	18		20	22		24	26	28		
	2	3	5		8	10	11	13		15		18	19		22	23		25	28	
1	3	5		7	9		11	13		15	17		19		21	23	25	27		
1		4	5		8	10	11	13		16	18	19		21		24	26	28		

## URQU ACHAKU

Qarqapata ukhamaraki Chachapoya ayllunsa sawuri kullakanakaxa urqu achakxa awayu, t'isnu ukhamaraki tari sawutanakaruwa sawupxi.



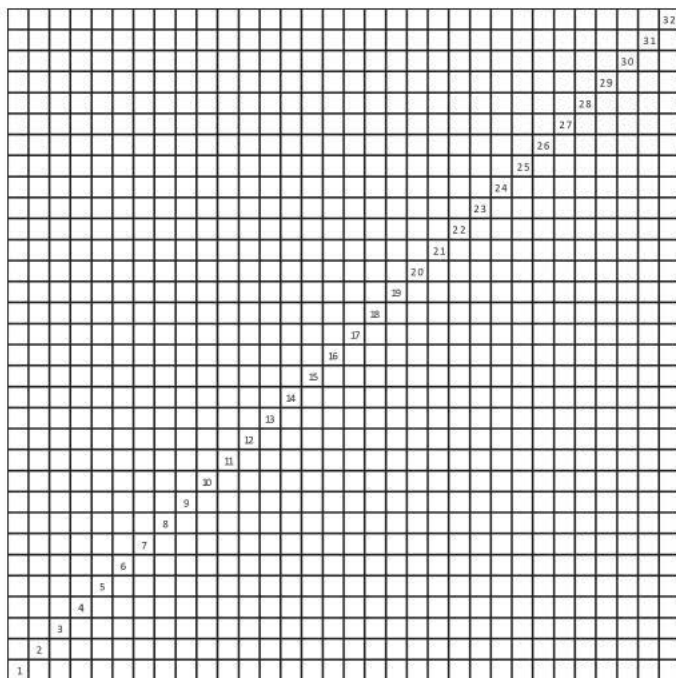
T'isnuru urqu achaku salta sawuta.



Urqu achaku salta jamuqata.

## Illawa

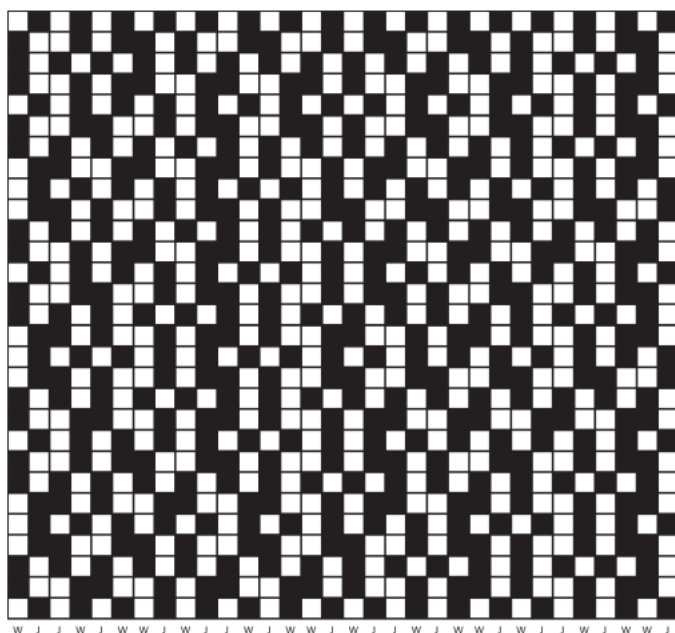
Urqu achaku saltaxa kimsa tunka payani kasta illawani sawutawa, janiwa maya illawasa paya kuti apnaqata utjkarakiti.





## Sawuta

Urqu achaku saltaxa kimsaqallqu chinumpita paya tunka llatunkani qipampita sawutawa, kimsaqallqu chinutxa chikataxa janq'u samini asi ch'ankhawa, yaqha chikatasti wila samini asi ch'ankharakiwa, ukhamatwa wilata "W" qalltasina janq'u "J" tilata asi ch'ankhampi wakt'ayasina sawutawa.



## Takxata

Urqu achaku saltanxa kimsa tunka payani kasta illawanakawa uñt'ata, ukatwa kimsa tunka payani takxatampi uñacht'ayata.

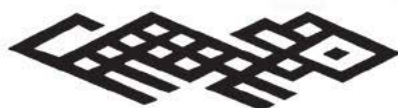
	2	4	6	8	10	12	14	16	18	20	22	24	26	28	30	32				
1		4	6	7	9		12	13		16	18	19	22	23	25	28	30	31		
1	3	5	7	9		11	13	15	17	19	21	23	25	27	29	31				
1		4	6	7		10	11		14	15	17		20	21	24	25	28	30	31	
2	4	6	8	10	12		14	16	18	20	22	24	26	28	30			32		
1		4	5		8	10	11		14	15	17		20	21	24	25	28	30	31	
1	3	5	7	9		11	13	15	17	19	21	23	25	27	29	31				
2	3		6	7		10	11	13		16	18	19	22	23	25	28	30	31		
2	4	6	8	10	12		14	16	18	20	22	24	26	28	30	32				
2	3	5	8	10	11	13		16	17		20	21	24	25	28	29	31	32		
1	3	5	7	9		11	13	15	17	19	21	23	25	27	29	31				
1		4	6	7		10	11	13		16	18	19	22	23		26	27		30	31
2	4	6	8	10	12		14	16	18	20	22	24	26	28	30	32				
1		4	5		8	10	11	13		16	18	19	21	24	25	28	30	31		
1	3	5	7	9		11	13	15	17	19	21	23	25	27	29	31				
2	3	5	8	10	11	13		16	17		20	22	23	25		28	30	31		
2	4	6	8	10	12		14	16	18	20	22	24	26	28	30	32				
2	3	5	8	10	11	13		16	17		20	21	24	25	28	29	31	32		
1	3	5	7	9		11	13	15	17	19	21	23	25	27	29	31				
1		4	5		8	10	11	13		16	18	19	22	23		26	27		30	31
2		4	6	8	10	12		14	16	18	20	22	24	26	28	30	32			
1		4	5		8	10	11	13		16	18	19	21	24	25	28	30	31		
2	3	5	8	10	11	13		16	17		20	22	23	25	28	30	31	32		
2	4	6	8	10	12		14	16	18	20	22	24	26	28	30	32				
2	3	5		8	10	11	13		16	17		20	21	24	25	28	29	31	32	
1	3	5	7	9		11	13	15	17	19	21	23	25	27	29	31				
1		4	5		8	10	11	13		16	18	19	22	23		26	27		30	31
2		4	6	8	10	12		14	16	18	20	22	24	26	28	30	32			
1		4	5		8	10	11	13		16	18	19	21	24	25	28	30	31		
2	3	5	8	10	11	13		16	17		20	22	23	25	28	30	31	32		
2		4	6	7	9		12	13		16	17		20	22	23	25	28	30	31	
1	3	5	7	9		11	13	15	17	19	21	23	25	27	29	31				
1		4	5		8	10	11	13		16	18	19	22	23		26	27		30	31
2		4	6	8	10	12		14	16	18	20	22	24	26	28	30	32			
1		4	5		8	10	11	13		16	18	19	21	24	25	28	30	31		
2	3	5	8	10	11	13		16	17		20	22	23	25	28	30	31	32		
2		4	6	7	9		12	13		16	17		20	22	23	25	28	30	31	
1	3	5	7	9		11	13	15	17	19	21	23	25	27	29	31				
1		4	5		8	10	11	13		16	18	19	22	23		26	27		30	31
2		4	6	8	10	12		14	16	18	20	22	24	26	28	30	32			

## QACHU ACHAKU

Qarqapata ayllunxa qachu achaku saltaxa awayu, t'isnu ukhamaraki tari sawutanakaruwa sawuta.



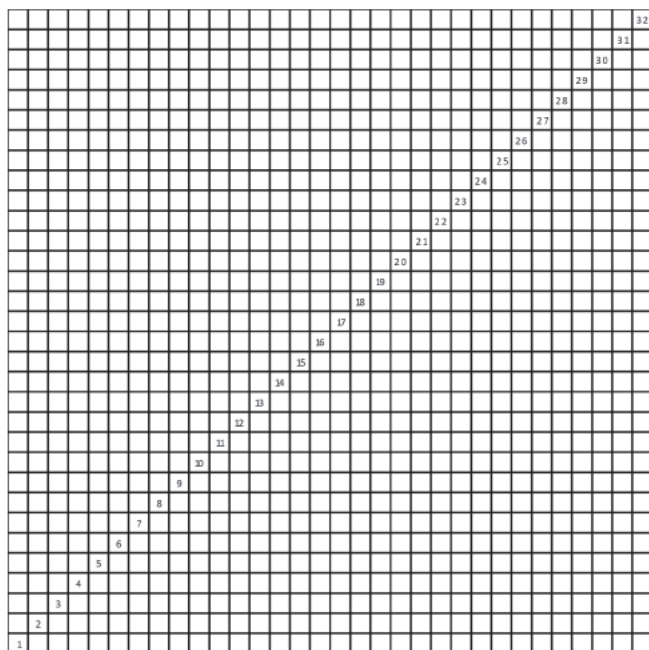
T'isnuru qachu achaku salta sawuta.



Qachu achaku salta jamuqata.

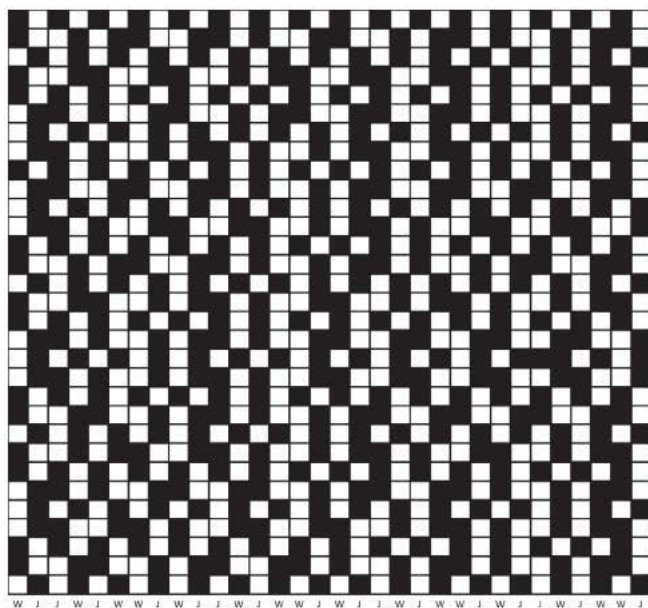
## Illawa

Qachu achaku saltaxa kimsa tunka payani kasta illawani sawutawa, janiwa maya illawasa paya kuti utjkarakiti.



## Sawuta

Qachu achaku saltaxa kimsaqallqu chinumpita kimsa tunka mayani qipampita sawutawa, kimsaqallqu chinutxa chikataxa janq'u samini asi ch'ankhawa, yaqha chikatasti wila samini asi ch'ankharakiwa, ukhamatwa wilata "W" qalltasina janq'u "J" tilata asi ch'ankhampi wakt'ayasina sawutawa.



## Takxata

Qachu achaku saltanxa kimsa tunka payani kasta illawanakawa uñt'ata, ukatwa kimsa tunka payani takxatampi uñacht'ayata.

1	3	5	7	9	11	13	15	17	19	21	23	25	27	29	31			
1	4	6	7		10	13		16	17	20	23	24	25	28	30	31		
2	4	6	8	9	10	12	14	16	18	20	22	24	26	28	30	32		
1	4	5		8	9		12	14	15		18	19	22	23	25	26	30	31
1	3	5	7	9	11	13	15	17	19	21	23	25	27	29	31			
2	3	5		8	9		12	14	15		18	19	22	23	25	28	30	31
2	4	6	8	10	12	14	16	18	20	22	24	26	28	30	32			
2	3	5		8	10	11	13	16	18	19	22	23	25	26	30	31		
1	3	5	7	9	11	13	15	17	19	21	23	25	27	29	31			
2	3		6	7		10	11	13	16	18	19	22	23	26	27	30	31	
2	4	6	8	10	12	14	16	18	20	22	24	26	28	30	32			
2	3	5		8	9		12	13	16	18	19	21	24	25	28	29	32	
1	3	5	7	9	11	13	15	17	19	21	23	25	27	29	31			
1	4	6	7		10	11	13	16	18	19	21	24	26	27	30	31		
2	4	6	8	10	12	14	16	18	20	22	24	26	28	30	32			
1	4	5		8	10	11	13	16	17		20	22	23	25	28	30	31	
1	3	5	7	9	11	13	15	17	19	21	23	25	27	29	31			
2	3	5		8	10	11	13	16	17		20	21	24	25	28	29	32	
2	4	6	8	10	12	14	16	18	20	22	24	26	27	28	30	32		
2	3	5		8	10	11	13	16	17		20	21	24	25	28	29	32	
1	3	5	7	9	11	13	15	17	19	21	23	25	27	29	31			
1	4	5		8	10	11	13	16	18	19	22	23	26	27	30	31		
2	4	6	8	10	12	14	16	18	20	22	24	26	28	30	32			
1	4	6	7		10	11	13	16	18	19	21	24	25	28	30	31		
1	3	5	7	9	11	13	15	17	19	21	23	25	27	29	31			
2	3	5		8	9		12	13		16	18	19	22	23	26	27	30	31
2	4	6	8	10	12	14	16	18	20	22	24	26	27	28	30	32		
2	3	5		8	10	11	13	16	17		20	21	24	25	28	29	32	
1	3	5	7	9	11	13	15	17	19	21	23	25	27	29	31			
1	4	5		8	10	11	13	16	17		20	22	23	26	27	30	31	
2	4	6	8	10	12	14	16	18	20	22	24	26	28	30	32			

## PHISI

Qarqapata ayllunxa phisi saltaxa awayu ukhamaraki t'isnu sawutanakanwa sawuta.



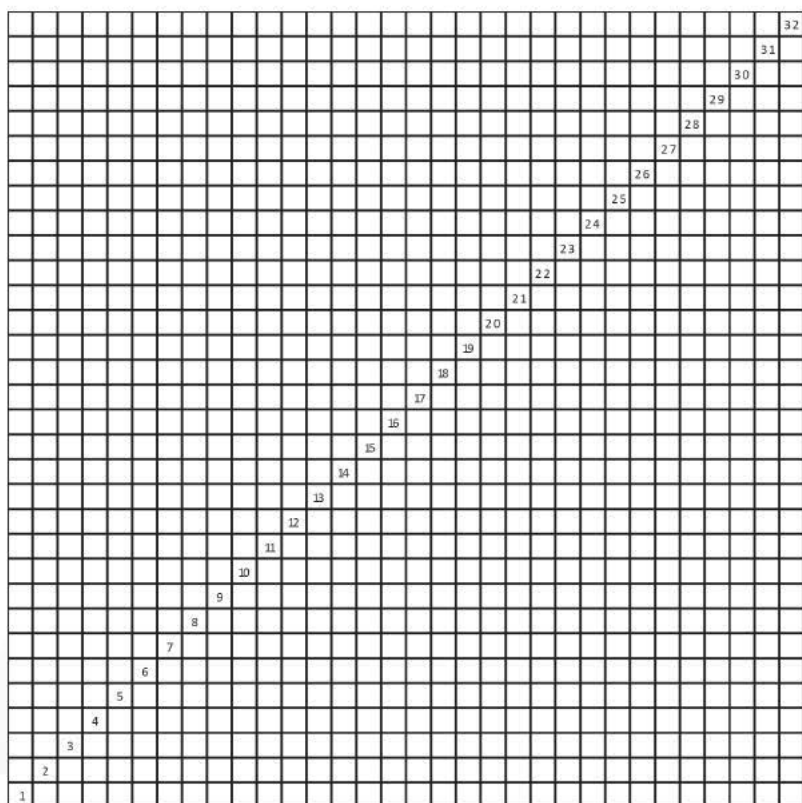
T'isnuru phisi salta sawuta.



Phisi salta jamuqata.

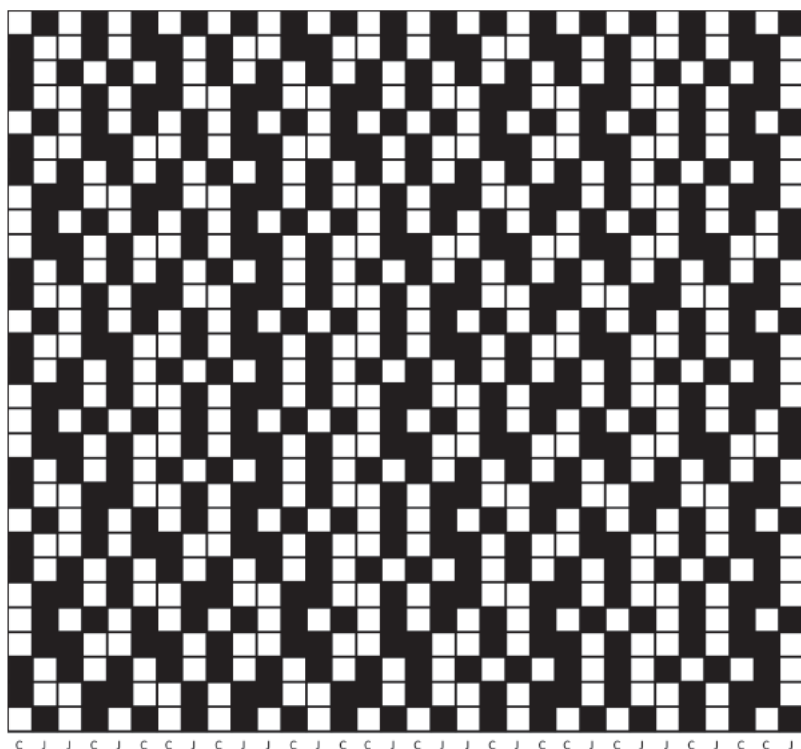
## Illawa

Phisi saltaxa kimsa tunka payani kasta illawani sawutawa, janiwa maya illawasa paya kuti utjkarakiti.



## Sawuta

Phisi saltaxa kimsaqallqu chinumpita paya tunka llatunkani qipampita sawutawa, kimsaqallqu chinutxa chikataxa janq'u samini asi ch'ankhawa, yaqha chikatasti ch'iyara samini asi ch'ankharakiwa, ukhamatwa ch'iyarata "C" qalltasina janq'u "J" tilata asi ch'ankhampi wakt'ayasina sawutawa.





# Takxata

Phisi saltanxa kimsa tunka payani kasta illawanakawa uñt'ata, ukatwa kimsa tunka payani takxatampi uñacht'ayata.

	2	4	6	8	10	12	14	16	18	20	22	24	26	28	30	32	
1		4	5	8	10	11	14	15	17	19	20	22	23	25	28	30	31
1	3	5	7	9	11	13	15	17	19	21	23	25	27	29	31		
	2	3	6	7	10	11	13	16	17	20	22	23	25	28	30	31	
	2	4	6	8	10	12	14	16	18	20	22	24	26	28	30	32	
	2	3	5	8	9	12	13	16	18	19	22	23	25	28	29	32	
1	3	5	7	9	11	13	15	17	19	21	23	25	27	29	31		
1		4	6	7	10	11	13	16	18	19	21	24	26	27	30	31	
	2	4	6	8	10	12	14	16	18	20	22	24	26	28	30	32	
1		4	5	8	10	11	13	16	17	18	20	22	23	25	28	30	31
1	3	5	7	9	11	13	15	17	19	21	23	25	27	29	31		
	2	3	5	8	10	11	14	15	17	20	22	23	25	28	30	31	
	2	4	6	8	10	12	14	16	18	20	22	24	26	28	30	32	
	2	3	5	8	10	11	14	15	17	20	22	23	26	27	29	32	
1	3	5	7	9	11	13	15	17	19	21	23	25	27	29	31		
1		4	5	8	10	11	13	16	18	20	22	23	26	27	30	31	
	2	4	6	8	10	12	14	16	18	20	22	24	26	28	30	32	
1		4	6	7	10	11	13	16	18	19	21	24	25	28	30	31	
1	3	5	7	9	11	13	15	17	19	21	23	25	27	29	31		
	2	3	5	8	9	12	13	16	18	19	22	23	25	28	30	31	
	2	4	6	8	10	12	14	16	18	20	22	24	26	28	30	32	
	2	3	6	7	9	12	13	16	17	20	22	23	25	28	30	31	
1	3	5	7	9	11	13	15	17	19	21	23	25	27	29	31		
1		4	5	8	10	11	13	16	17	20	22	23	25	28	30	31	
	2	4	6	8	10	12	14	16	18	20	22	24	26	28	30	32	
	2	3	6	7	9	12	13	16	17	20	22	23	25	28	30	31	
1	3	5	7	9	11	13	15	17	19	21	23	25	27	29	31		
1		4	5	8	10	11	13	16	17	20	22	23	25	28	30	31	
	2	4	6	8	10	12	14	16	18	20	22	24	26	28	30	32	

# NAYRA

Qarqapata aylluna sawuri kullakanakaxa nayra sutini saltxa tari, awayu, ch'uspa, inkhuña ukhamaraki t'isnu sawutanakaruwa sawupxi. Nayra saltaxa uywa nayranakaruwa uñanchayi sasawa sawuri kullakanakaxa qhananchapxi.



T'isnuru nayra salta sawuta.

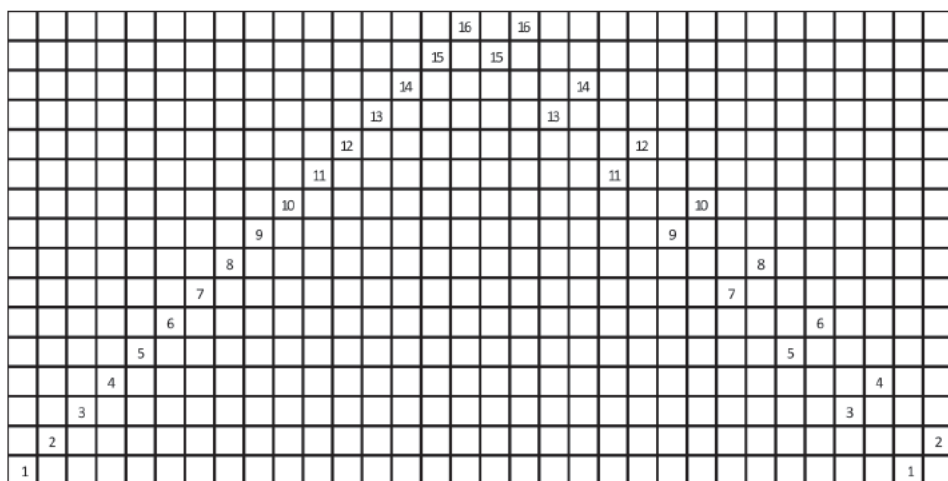


Nayra salta jamuqata.



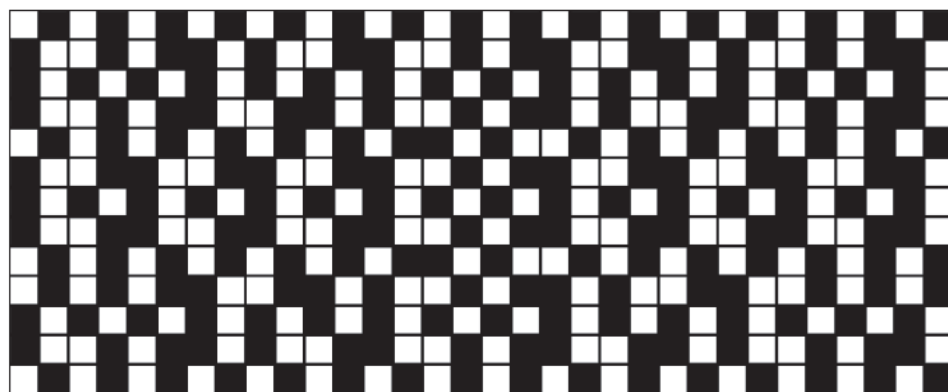
## Illawa

Nayra saltaxa tunka suxtani kasta illawani sawutawa, sapa kasta illawaxa paya kutikamawa apnaqataraki.



## Sawuta

Nayra saltaxa kimsaqallqu chinumpita tunka kimsani qipampita sawutawa, kimsaqallqu chinutxa chikataxa janq'u samini asi ch'ankhawa, yaqha chikatasti wila samini asi ch'ankharakiwa, ukhamatwa wilata "W" qalltasina janq'u "J" tilata asi ch'ankhampi wakt'ayasina sawutawa.



W J J W J W W J W J J W J W W J W J J W J W W J W J J W J W W J

## Takxata

Nayra saltanxa tunka suxtani kasta illawanakawa uñt'ata, ukatwa tunka suxtani takxatampi uñacht'ayata.

	2		4		6		8		10		12		14		16
1			4		6	7		9			12	13			16
1		3		5		7		9		11		13		15	
1			4		6	7			10	11		13			16
	2		4		6		8		10		12		14	15	
1			4	5			8	9			12	13			16
1		3		5		7		9		11		13		15	
1			4	5			8	9			12	13			16
	2		4		6		8		10		12		14	15	
	2		4		6	7			10	11		13			16
1		3		5		7		9		11		13		15	
1			4		6	7		9			12	13			16
	2		4		6		8		10		12		14	15	

## QUQA ALI

Qarqapata ayllunxa sawuri kullakanakaxa quqa ali saltxa awayu, ukhamaraki t'isnu sawutanakaruwa sawupxi.

Qarqapata ayllunxa kunaymani quqa alinakawa utji, jisk'a quqanaka uka kikiparaki jach'a quqa alinakawa utjaraki, sisnawa: *kiswara*, *eucalipto* ukhamaraki *pino* quqa alinaka, ukatwa sawurinakaxa sawutanakaru waraqt'apxaraki.



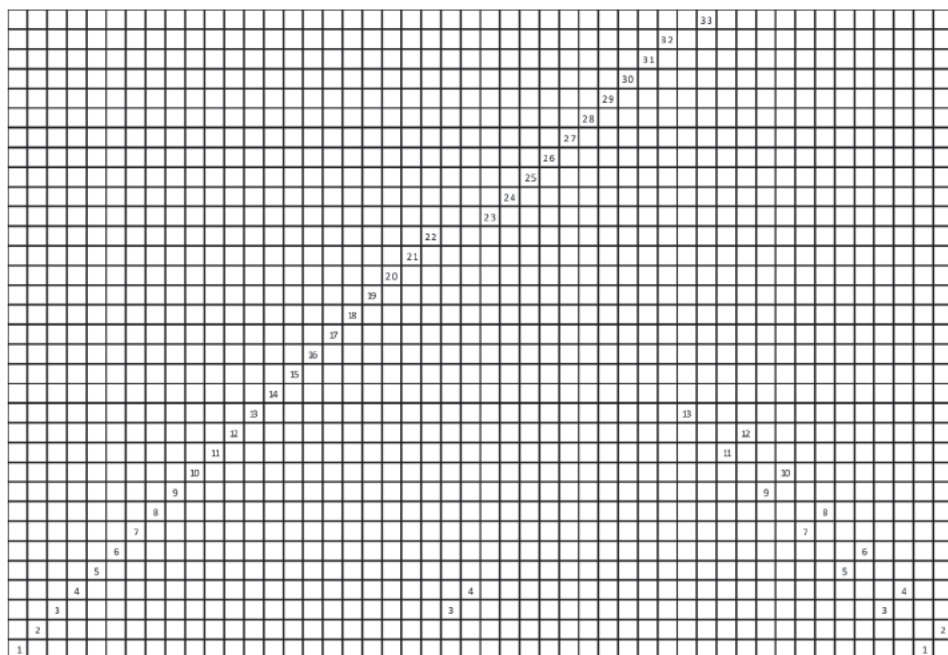
T'isnuru quqa ali salta sawuta.



Quqa ali salta jamuqata.

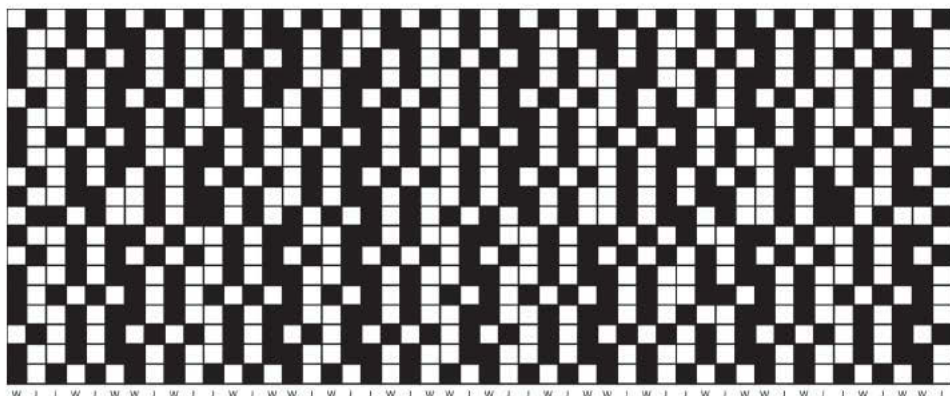
## Illawa

Quqa ali saltaxa kimsa tunka kimsani kasta illawani sawutawa, mayata payakama ukatxa phisqata tunka kimsani illawkamaxa paya kutikamawa apnaqata, kimsirimpi pusirimpisti kimsa kutikamarakiwa apnaqataraki, ukatxa; tunka pusiri illawata kimsa tunka kimsankamaxa maya kutikamakirakiwa apnaqataraki.



## Sawuta

Quqa ali saltaxa tunka payani chinumpita tunka llatunkani qipampita sawutawa, tunka payani chinutxa chikataxa qhana samini asi ch'ankhawa, yaqha chikatasti wila samini asi ch'ankharakiwa, ukhamatwa wilata "W" qalltasina janq'u "J" tilata asi ch'ankhampi wakt'ayasina sawutawa.



## Takxata

Quqa ali saltanxa  
kimsa tunka kimsani  
kasta illawanakawa  
uñt'ata, ukatwa  
kimsa tunka  
kimsani takxatampi  
uñacht'ayata.

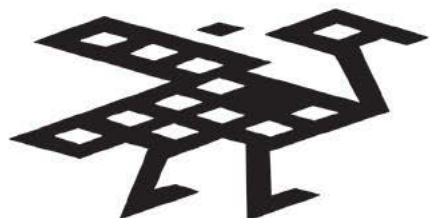
1	2	4	6	8	35	32	34	36	38	20	22	24	26	28	30	32	33	
1		4	6	7	9		32	34	35	17	20	21	24	25	28	29	31	33
1	3	5	7	9		31	33	35	37	39	21	23	25	27	29	31		
1		4	6	7	9		32	34	35	18	35	21	24	25	27	30	31	33
1	2	4	6	8	33	32	35	36	38	20	22	24	26	28	30	32	33	
1		4	6	7	9		32	33	36	38	20	21	24	25	27	30	32	
1	3	5	7	9		31	33	35	37	39	21	23	25	27	29	31		
1		4	6	7	9		30	31	33	36	38	20	21	24	25	27	30	32
1	2	4	6	8	30	32	33	36	38	20	22	24	26	28	30	32	33	
1		4	5	8	30	31	33	36	38	20	21	24	25	27	30	32	33	
1	2	3	5	8	30	31	33	36	37	39	21	23	25	27	30	32		
1		4	6	7	9		32	34	35	18	35	21	23	26	28	29	31	
1	2	4	6	8	32	32	34	36	38	20	22	24	26	28	30	32	33	
1		4	6	7	9		32	34	35	17	39	21	23	26	28	29	31	33
1	3	5	7	9		31	33	35	37	39	21	23	25	27	29	31	33	
1		4	6	7	9		32	34	35	18	35	21	23	26	28	29	31	33
1	2	4	6	8	30	32	33	36	38	20	22	24	26	28	30	32	33	
1		4	6	7	9		32	34	35	18	35	21	23	26	28	29	31	33
1	3	5	7	9		31	33	35	37	39	21	23	25	27	29	31		
1		4	6	7	9		32	34	35	18	35	21	23	26	28	29	31	33
1	2	4	6	8	30	32	33	36	38	20	22	24	26	28	30	32	33	
1		4	6	7	9		32	34	35	18	35	21	23	26	28	29	31	33
1	3	5	7	9		31	33	35	37	39	21	23	25	27	29	31		

## PATO

Qarqapata ayllunxa sawuri kullakanakaxa *pato* saltxa awayu, t'isnu,  
ukhamaraki inkhuña sawutanakaruwa sawupxi.



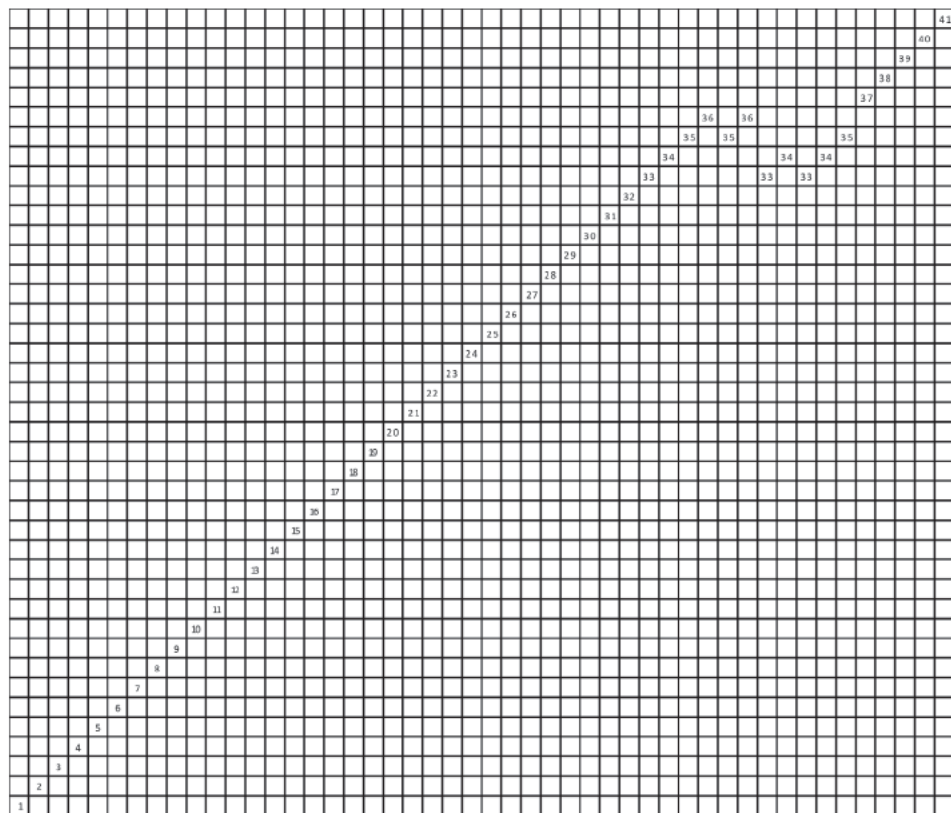
*Pato* salta sawuta.



*Pato* salta jamuqata.

## Illawa

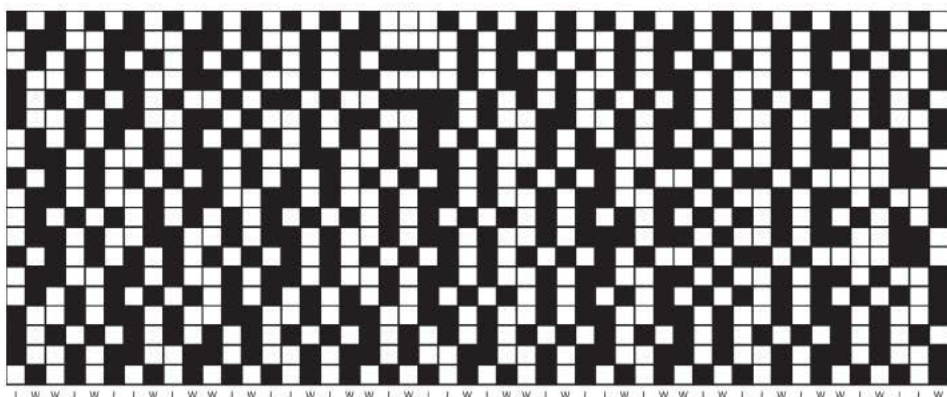
*Pato saltaxa pusi tunka mayani kasta illawani sawutawa, mayata kimsa tunka payankama ukhamaraki kimsa tunka paqallqunita pusi tunka mayankamaxa maya kutikamakiwa illawanakaxa apnaqata, kimsa tunka kimsanita kimsa tunka phisqankamaxa kimsa kutikamawa apnaqata, ukatxa; kimsa tunka suxtani illawaxa paya kutiwa apnaqataraki.*



## Sawuta

*Pato saltaxa tunka payani chinumpita tunka llatunkani qipampita sawutawa, tunka payani chinutxa chikataxa qhana samini asi ch'ankhawa, yaqha chikatasti wila samini asi ch'ankharakiwa, ukhamatwa wilata "W" qalltasina janq'u "J" tilata asi ch'ankhampi wakt'ayasina sawutawa.*





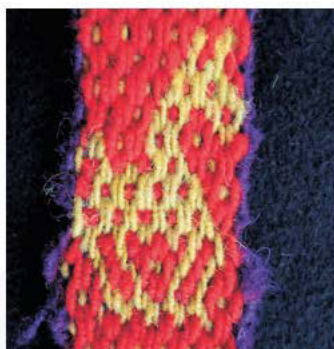
## Takxata

Pato saltanxa  
pusi tunka  
mayani kasta  
illawanakawa  
uñt'ata,  
ukatwa ukkha  
takxatampi  
uñacht'ayata.

1	3	5	7	9	11	13	15	17	19	21	23	25	27	29	31	33	35	37	39	41
2	4	6	8	10	12	14	16	18	20	22	24	26	28	30	32	34	36	38	40	42
3	5	7	9	11	13	15	17	19	21	23	25	27	29	31	33	35	37	39	41	43
4	6	8	10	12	14	16	18	20	22	24	26	28	30	32	34	36	38	40	42	44
5	7	9	11	13	15	17	19	21	23	25	27	29	31	33	35	37	39	41	43	45
6	8	10	12	14	16	18	20	22	24	26	28	30	32	34	36	38	40	42	44	46
7	9	11	13	15	17	19	21	23	25	27	29	31	33	35	37	39	41	43	45	47
8	10	12	14	16	18	20	22	24	26	28	30	32	34	36	38	40	42	44	46	48
9	11	13	15	17	19	21	23	25	27	29	31	33	35	37	39	41	43	45	47	49
10	12	14	16	18	20	22	24	26	28	30	32	34	36	38	40	42	44	46	48	50
11	13	15	17	19	21	23	25	27	29	31	33	35	37	39	41	43	45	47	49	51
12	14	16	18	20	22	24	26	28	30	32	34	36	38	40	42	44	46	48	50	52
13	15	17	19	21	23	25	27	29	31	33	35	37	39	41	43	45	47	49	51	53
14	16	18	20	22	24	26	28	30	32	34	36	38	40	42	44	46	48	50	52	54
15	17	19	21	23	25	27	29	31	33	35	37	39	41	43	45	47	49	51	53	55
16	18	20	22	24	26	28	30	32	34	36	38	40	42	44	46	48	50	52	54	56
17	19	21	23	25	27	29	31	33	35	37	39	41	43	45	47	49	51	53	55	57
18	20	22	24	26	28	30	32	34	36	38	40	42	44	46	48	50	52	54	56	58
19	21	23	25	27	29	31	33	35	37	39	41	43	45	47	49	51	53	55	57	59
20	22	24	26	28	30	32	34	36	38	40	42	44	46	48	50	52	54	56	58	60
21	23	25	27	29	31	33	35	37	39	41	43	45	47	49	51	53	55	57	59	61
22	24	26	28	30	32	34	36	38	40	42	44	46	48	50	52	54	56	58	60	62
23	25	27	29	31	33	35	37	39	41	43	45	47	49	51	53	55	57	59	61	63
24	26	28	30	32	34	36	38	40	42	44	46	48	50	52	54	56	58	60	62	64
25	27	29	31	33	35	37	39	41	43	45	47	49	51	53	55	57	59	61	63	65
26	28	30	32	34	36	38	40	42	44	46	48	50	52	54	56	58	60	62	64	66
27	29	31	33	35	37	39	41	43	45	47	49	51	53	55	57	59	61	63	65	67
28	30	32	34	36	38	40	42	44	46	48	50	52	54	56	58	60	62	64	66	68
29	31	33	35	37	39	41	43	45	47	49	51	53	55	57	59	61	63	65	67	69
30	32	34	36	38	40	42	44	46	48	50	52	54	56	58	60	62	64	66	68	70
31	33	35	37	39	41	43	45	47	49	51	53	55	57	59	61	63	65	67	69	71
32	34	36	38	40	42	44	46	48	50	52	54	56	58	60	62	64	66	68	70	72
33	35	37	39	41	43	45	47	49	51	53	55	57	59	61	63	65	67	69	71	73
34	36	38	40	42	44	46	48	50	52	54	56	58	60	62	64	66	68	70	72	74
35	37	39	41	43	45	47	49	51	53	55	57	59	61	63	65	67	69	71	73	75
36	38	40	42	44	46	48	50	52	54	56	58	60	62	64	66	68	70	72	74	76
37	39	41	43	45	47	49	51	53	55	57	59	61	63	65	67	69	71	73	75	77
38	40	42	44	46	48	50	52	54	56	58	60	62	64	66	68	70	72	74	76	78
39	41	43	45	47	49	51	53	55	57	59	61	63	65	67	69	71	73	75	77	79
40	42	44	46	48	50	52	54	56	58	60	62	64	66	68	70	72	74	76	78	80
41	43	45	47	49	51	53	55	57	59	61	63	65	67	69	71	73	75	77	79	81
42	44	46	48	50	52	54	56	58	60	62	64	66	68	70	72	74	76	78	80	82
43	45	47	49	51	53	55	57	59	61	63	65	67	69	71	73	75	77	79	81	83
44	46	48	50	52	54	56	58	60	62	64	66	68	70	72	74	76	78	80	82	84
45	47	49	51	53	55	57	59	61	63	65	67	69	71	73	75	77	79	81	83	85
46	48	50	52	54	56	58	60	62	64	66	68	70	72	74	76	78	80	82	84	86
47	49	51	53	55	57	59	61	63	65	67	69	71	73	75	77	79	81	83	85	87
48	50	52	54	56	58	60	62	64	66	68	70	72	74	76	78	80	82	84	86	88
49	51	53	55	57	59	61	63	65	67	69	71	73	75	77	79	81	83	85	87	89
50	52	54	56	58	60	62	64	66	68	70	72	74	76	78	80	82	84	86	88	90
51	53	55	57	59	61	63	65	67	69	71	73	75	77	79	81	83	85	87	89	91
52	54	56	58	60	62	64	66	68	70	72	74	76	78	80	82	84	86	88	90	92
53	55	57	59	61	63	65	67	69	71	73	75	77	79	81	83	85	87	89	91	93
54	56	58	60	62	64	66	68	70	72	74	76	78	80	82	84	86	88	90	92	94
55	57	59	61	63	65	67	69	71	73	75	77	79	81	83	85	87	89	91	93	95
56	58	60	62	64	66	68	70	72	74	76	78	80	82	84	86	88	90	92	94	96
57	59	61	63	65	67	69	71	73	75	77	79	81	83	85	87	89	91	93	95	97
58	60	62	64	66	68	70	72	74	76	78	80	82	84	86	88	90	92	94	96	98
59	61	63	65	67	69	71	73	75	77	79	81	83	85	87	89	91	93	95	97	99
60	62	64	66	68	70	72	74	76	78	80	82	84	86	88	90	92	94	96	98	100

## QARWA

Qarqapata ayllunxa sawuri kullakanakaxa qarwa saltxa inkhuña,  
awayu, t'isnu, ch'uspa ukhamaraki tari sawutanakaruwa sawupxi.



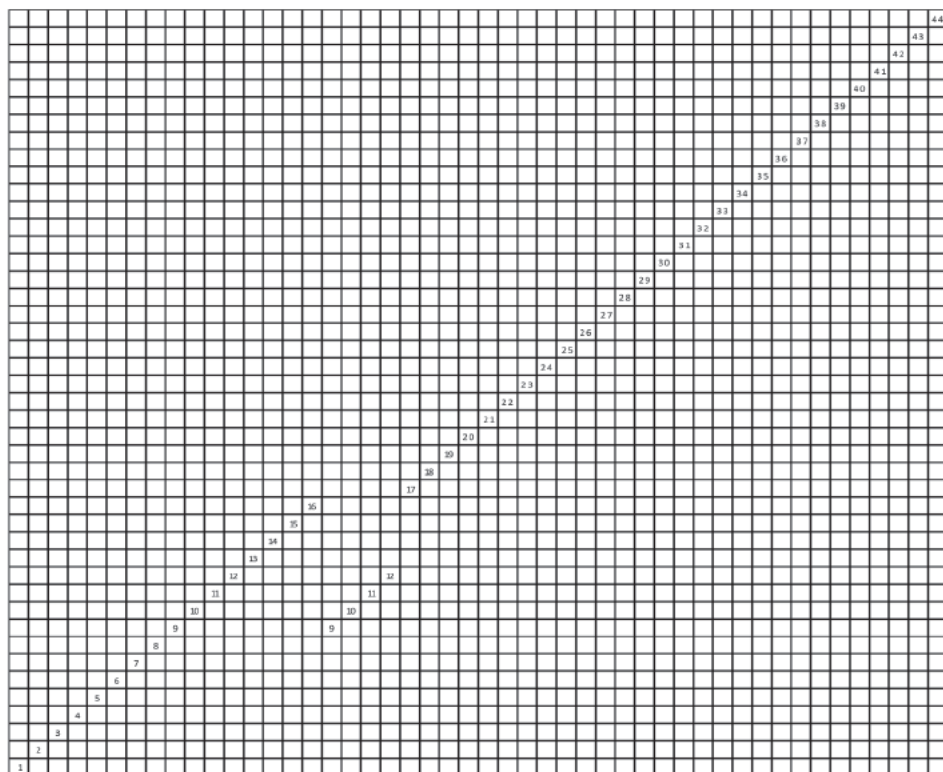
Qarwa salta sawuta.



Qarwa salta jamuqata.

## Illawa

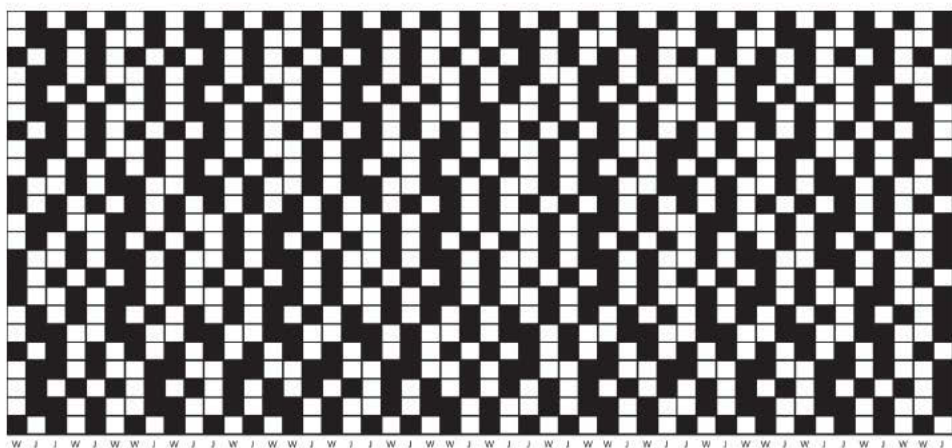
Qarwa saltaxa pusi tunka pusini kasta illawani sawutawa, mayata kimsaqaallqukama ukhamaraki tunka kimsanita pusi tunka pusinkamaxa maya kutikamakiwa apnaqata, ukatxa llatunkata tunka payankamasti paya kutikamarakiwa apnaqataraki.



## Sawuta

Qarwa saltaxa tunka payani chinumpita paya tunka kimsani qipampita sawutawa, tunka payani chinutxa chikataxa qhana samini asi ch'ankhawa, yaqha chikatasti wila samini asi ch'ankharakiwa, ukhamatwa wilata "W" qalltasina janq'u "J" tilata asi ch'ankhampi wakt'ayasina sawutawa.





## Takxata

Qarwa saltanxa pusi tunka pusini kasta illawanakawa uñt'ata, ukatwa pusi tunka pusini takxatampi uñacht'ayata.

2	4	6	8	30	12	34	36	38	20	22	24	26	28	30	32	34	36	38	40	42	44
3	5		8	30	11	33		36	37		20	22	23	25	27	28	29	31	33	35	37
1	3	5	7	9	11	13	15	17	19	21	23	25	27	29	31	33	35	37	39	41	43
2	3	5		8	30	11	33		36	37		20	22	23	25	27	28	29	31	33	35
2	4	6	8	30	12	34	36	38	20	22	24	26	28	30	32	34	36	38	40	42	44
2	3	5		8	30	11	33		36	37		20	21	24	26	27	29	31	33	35	37
1	3	5	7	9	11	13	15	17	19	21	23	25	27	29	31	33	35	37	39	41	43
2	3	5		8	30	11	33		36	38	39	21		24	26	27		30	31	33	35
2	4	6	8	30	12	34	36	38	20	22	24	26	28	30	32	34	36	38	40	42	44
1		4	6	7	9	30	11	33		36	38	39	21		24	26	27		30	31	33
1	3	5	7	9	11	13	15	17	19	21	23	25	27	29	31	33	35	37	39	41	43
2	3		6	7	9	12	34	35		36	39	21		24	26	27	29	31	33	35	37
2	4	6	8	30	12	34	36	38	20	22	24	26	28	30	32	34	36	38	40	42	44
1		4	6	7	9	12	34	35		36	39	21		24	26	27	29	31	33	35	37
1	3	5	7	9	11	13	15	17	19	21	23	25	27	29	31	33	35	37	39	41	43
1		4	6	7	9	12	34	35		36	39	21		24	26	27	29	31	33	35	37
2	3		6	7	9	12	34	35		36	39	21		24	26	27	29	31	33	35	37
2	4	6	8	30	12	34	36	38	20	22	24	26	28	30	32	34	36	38	40	42	44
1		4	6	7	9	12	34	35		36	39	21		24	26	27	29	31	33	35	37
1	3	5	7	9	11	13	15	17	19	21	23	25	27	29	31	33	35	37	39	41	43
1		4	6	7	9	12	34	35		36	39	21		24	26	27	29	31	33	35	37
2	3		6	7	9	12	34	35		36	39	21		24	26	27	29	31	33	35	37
2	4	6	8	30	12	34	36	38	20	22	24	26	28	30	32	34	36	38	40	42	44
2	3	5		8	9		12	34	35		36	39	21		24	26	27	29	31	33	35
1	3	5	7	9	11	13	15	17	19	21	23	25	27	29	31	33	35	37	39	41	43

## KUTI

Qarqapata aylluna ukhamaraki Chachapoya ayllunsa kuti saltaxa awayu, t'isnu, inkhuña ukhamaraki tari sawutanakaru sawutawa. Kutixa iwisa, qarwa ukhamaraki waka lip'ichita khuchhutawa ukhamata lijwanaru wana ñach'katañataki.



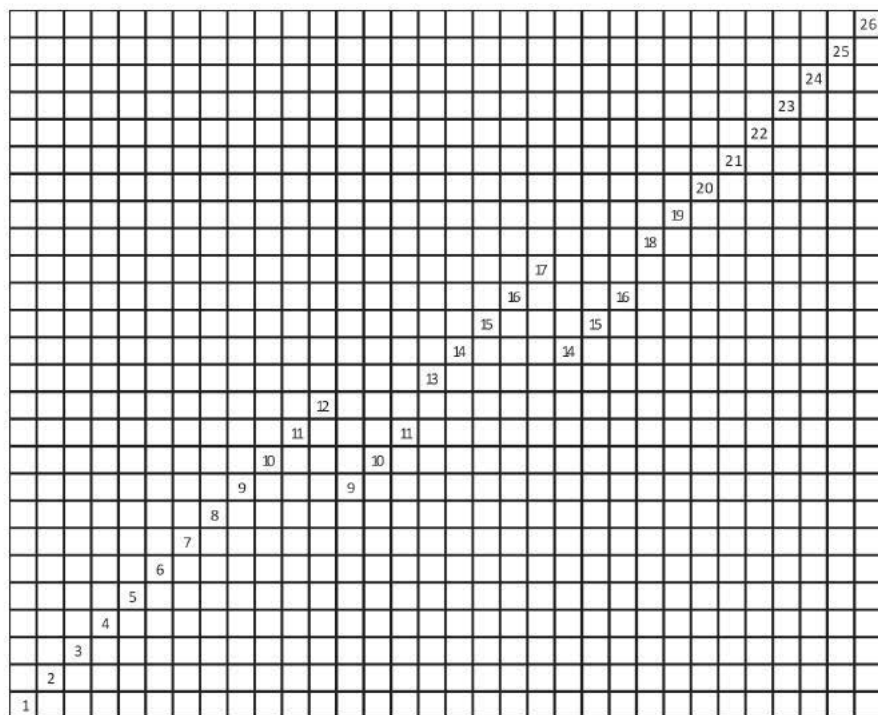
Kuti salta sawuta.



Kuti salta jamuqata.

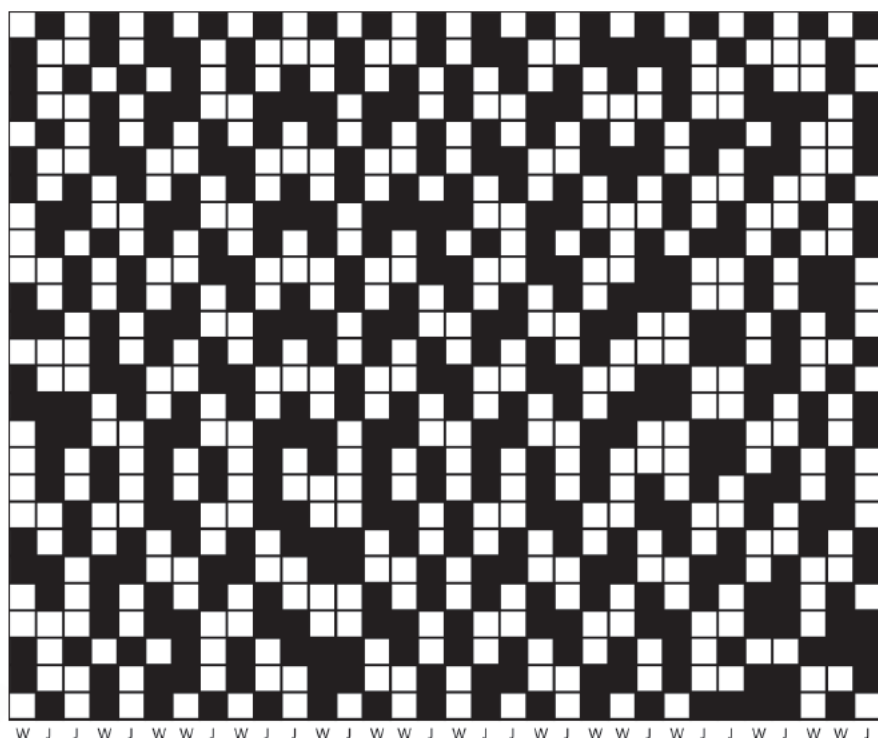
## Illawa

Kuti saltaxa paya tunka suxtani kasta illawani sawutawa, mayata kimsaqallqukama, tunka payiri, tunka kimsiri ukatxa tunka paqallquta paya tunka suxtankamaxa maya kutikamakiwa apnaqata; llatunkata tunka mayankama ukatxa tunka pusinita tunka suxtankamaxa paya kutikamarakiwa apnaqataraki.



## Sawuta

Kuti saltaxa kimsaqallqu chinumpita paya tunka suxtani qipampita sawutawa, kimsaqallqu chinutxa chikataxa janq'u samini asi ch'ankhawa, yaqha chikatasti wila samini asi ch'ankharakiwa, ukhamatwa wilata "W" qalltasina janq'u "J" tilata asi ch'ankhampi wakt'ayasina sawutawa.



# Takxata

Kuti saltanxa paya tunka suxtani kasta illawanakawa uñt'ata, ukatwa paya tunka suxtani takxatampi uñacht'ayata.

	2		4		6		8		10		12	13		15		17	18		20		22		24		26
1			4		6	7		9				13		15	16		18	19		21				25	
1		3		5		7		9			11			14		16			19			22			25
1			4		6	7			10	11	12		14			17		19			22	23	24		26
	2		4		6		8		10		12	13		15		17	18		20	21		23			26
1			4	5			8	9				13		15	16		18		20		22	23			26
1		3		5		7		9			11			14		16		19			22				25
	2	3			6	7			10	11	12	13	14			17		19		21			24		26
	2		4		6		8		10		12	13		15		17	18		20	21		23			26
		3		5			8	9				13	14			17	18	19			22		24	25	
1		3		5		7		9			11			14		16		18	19			22		24	25
1	2		4		6	7			10	11	12			15	16				20	21		23		25	
			4		6		8		10		12	13		15		17			20	21		23			26
1			4	5			8	9				13	14			17	18	19			22	23		25	
1	2	3		5		7		9			11			14		16		18	19			22		24	26
	2	3			6	7			10	11	12			15	16				20	21			24		26
	2		4		6		8		10		12	13		15		17			20	21		23		25	
	2		4		6		8		10			13		15		17	18		20		22	23		25	
		3			6	7			10	11			14			17	18	19			22		24	25	
1		3		5		7		9			11	12		14		16			19	21			24		26
1	2		4	5			8	9				12	13		15	16			20	21		23			26
	2		4		6		8		10			13		15		17	18		20		22	23		25	
			4		6	7			10	11			14			17	18	19			22	23		25	26
1		3		5		7		9			11	12		14		16			19	21			24	25	26
1			4		6	7		9				12	13		15	16			19		22	23			26
	2		4		6		8		10		12	13		15		17	18		20	21	22	23		25	

## JUKU

Juku saltxa sawuri kullakanakaxa awayu ukhamaraki t'isnu sawutanakaruwa sawupxi. Chachapoya ayllunxa jukuxa jaqina jiwañapa yatiyi, kunapachatixa maya uta jak'ana jukuski uka pachaxa uka utana jaqi jiwañapatakiwa.



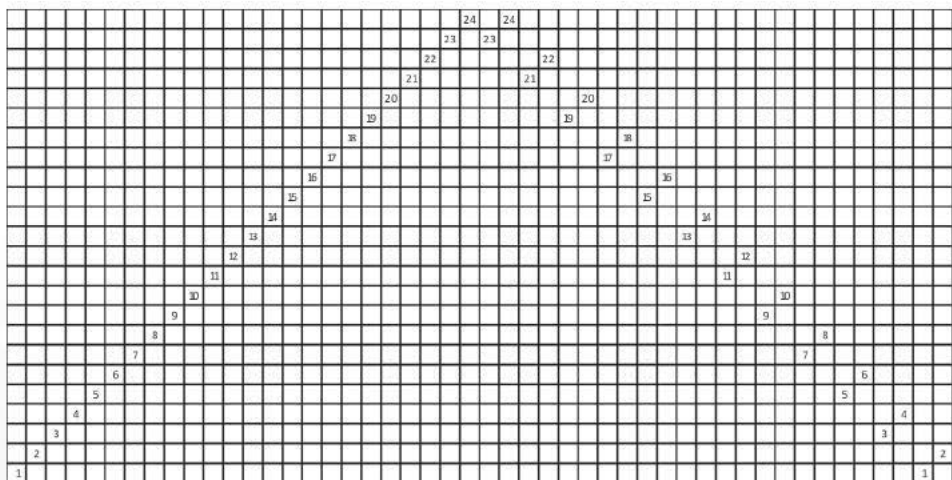
Juku salta sawuta.



Juku salta jamuqata.

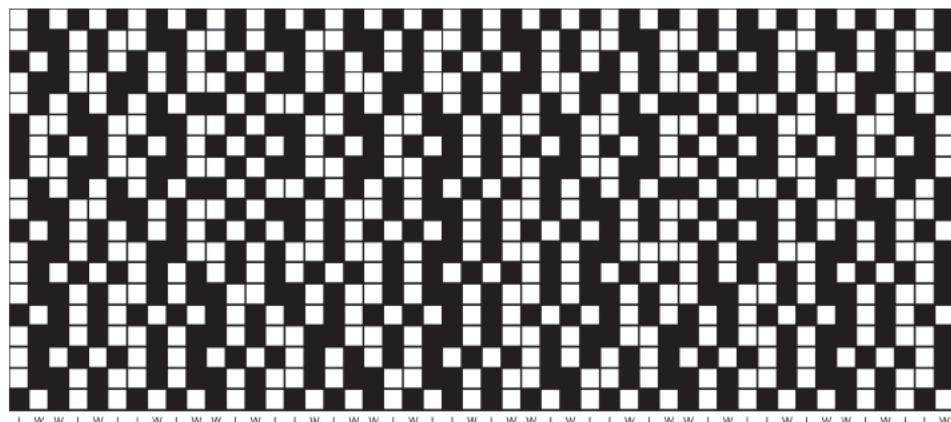
## Illawa

Juku saltaxa paya tunka pusini kasta illawani sawutawa, sapa kasta illawaxa paya kutikamawa apnaqata.



## Sawuta

Juku saltaxa tunka payani chinumpita tunka llatunkani qipampita sawutawa, tunka payani chinutxa chikataxa qhana samini asi ch'ankhawa, yaqha chikatasti wila samini asi ch'ankharakiwa, ukhamatwa janq'u qhana ch'ankhata "J" qalltasina wila "W" tilata asi ch'ankhampi wakt'ayasina sawutawa.



## Takxata

Juku saltanxa paya tunka pusini kasta illawanakawa uñt'ata, ukatwa paya tunka pusini takxatampi uñacht'ayata.

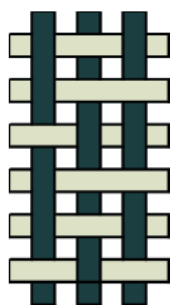
	2	4	6	8	10	12	14	16	18	20	22	24
	2	3	5	8	9	12	14	15	18	19	21	24
1	3	5	7	9	11	13	15	17	19	21	23	
	2	3	6	7	9	12	14	15	17	20	21	23
	2	4	6	8	10	11	13	16	18	20	22	24
1	4	5	8	9	12	14	15	18	19	22	23	
1	3	5	7	9	11	13	15	17	19	21	23	
1	4	5	8	9	12	14	15	18	19	22	23	
	2	4	6	8	10	11	13	16	18	20	22	24
	2	3	6	7	9	12	14	15	17	20	22	23
1	3	5	7	9	11	13	15	17	19	21	23	
	2	3	5	8	9	12	14	15	17	20	22	23
	2	4	6	8	10	12	14	16	18	20	22	24
	2	3	5	8	10	11	14	15	17	20	22	23
1	3	5	7	9	11	13	15	17	19	21	23	
	2	3	5	8	10	11	13	16	17	20	22	23
	2	4	6	8	10	12	14	16	18	20	22	24
	2	3	5	8	10	11	13	16	18	19	22	23
1	3	5	7	9	11	13	15	17	19	21	23	



# SAWUNAKA

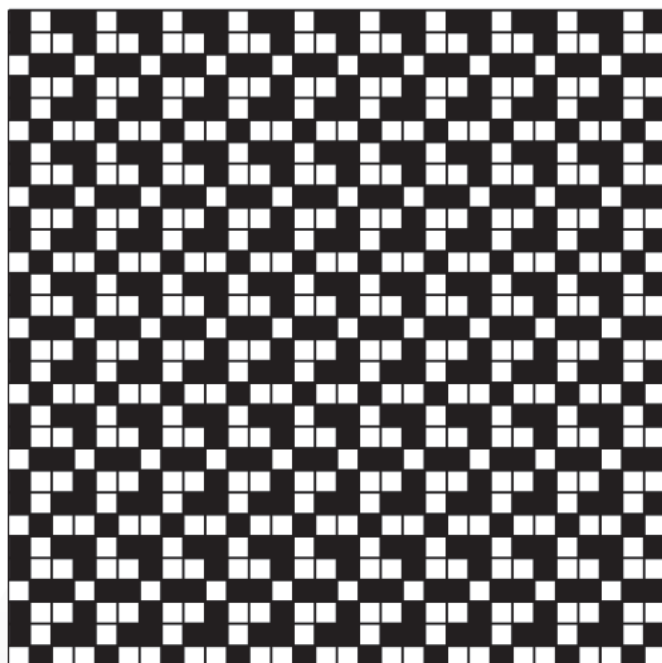
Aka qhipa t'aqanxa sawuta saltanakaru amuyt'asawa yaqha sawunaka uñstayasiwayi, ukhamata takiña sawunakampi ukhamaraki yaqha sawunakampi sawuñataki. Janiwa pampa sawumpi (*telar de piso*) sawuñatakikiti kunalaykutixa pampa sawumpixa sawuri kullakanakaxa paya (*manqha ukhamaraki pata*) tilata asi ch'ankhampiwa sawutanaka (*faz de urdimbre*) sawupxi, jichhaxa ch'ulla asi tilata ch'ankhampi sawuñatakiwa wakt'ayasiraki, ukatxa sawutanakanxa qipasa asi tilata ch'ankhasa purapa tuqiruwa uñstaraki.

## Qillwanaka



Qillwanaka sawuta uñanchayata.

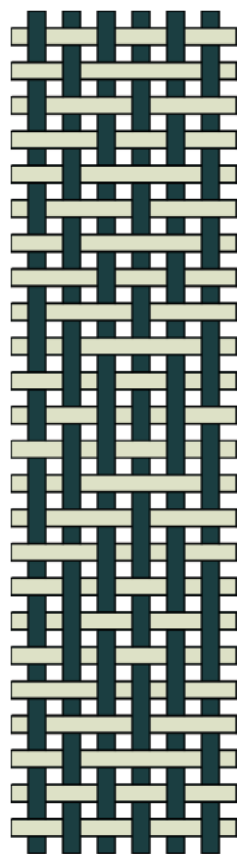
	3		3		3		3		3		3		3		3		3		3
2		2		2		2		2		2		2		2		2		2	
1		1		1		1		1		1		1		1		1		1	



1	3
1	
2	3
1	
1	3
2	
1	3
1	
2	3
1	
1	3
2	
1	3
1	
2	3
1	
1	3
2	
1	3
1	
2	3
1	
1	3
2	
1	3
1	
2	3
1	
1	3
2	

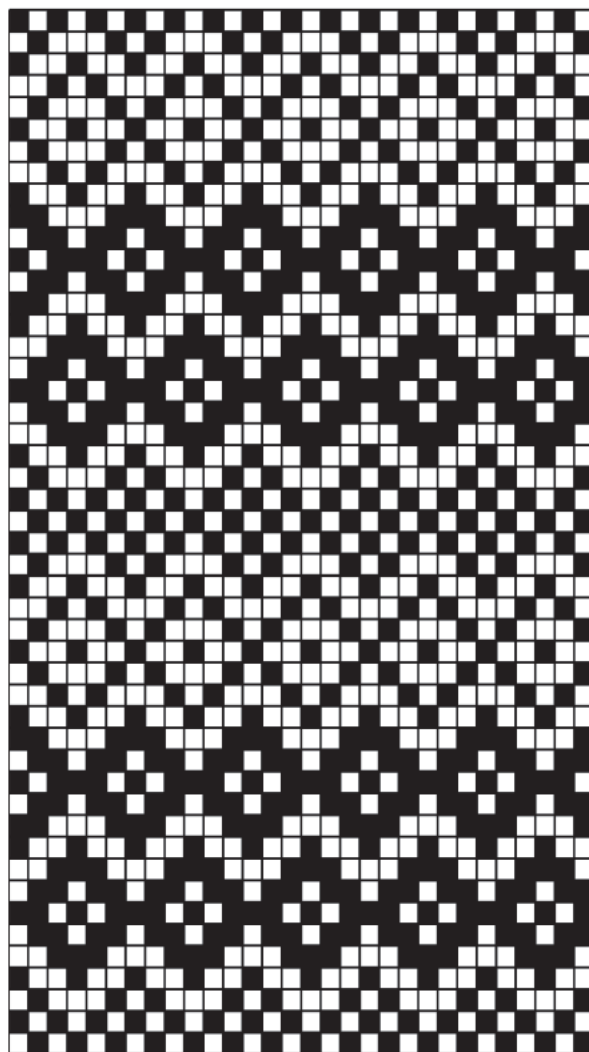


# P'uyu p'uyu



P'uyu p'uyu sawuta  
uñanchayata.

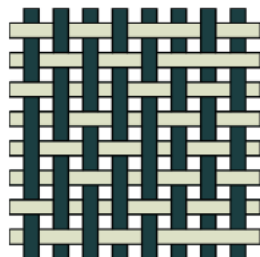
		4				4				4				4				4	
	3	3			3	3			3	3			3	3			3	3	
2			2	2		2	2			2	2			2	2			2	2
1				1				1				1				1			



1	3		
2			
1		4	
	3		
2			
1		4	
2			
	3		
1		4	
1	2		
2	3		
1	3	4	
2	3		
1	2		
1		4	
	3	4	
2	3		
1	2	4	
2	3		
	3	4	
1		4	
	2		
1	3		
2		4	
1	3		
2			
1		4	
	3		
2			
1		4	
	2		
	3		
1		4	
1	2		
2	3		
1	3	4	
2	3		
1	2		
1		4	
	3	4	
2	3		
1	2	4	
	3	4	
2	3		
1		4	
	2		
1	3		
2		4	

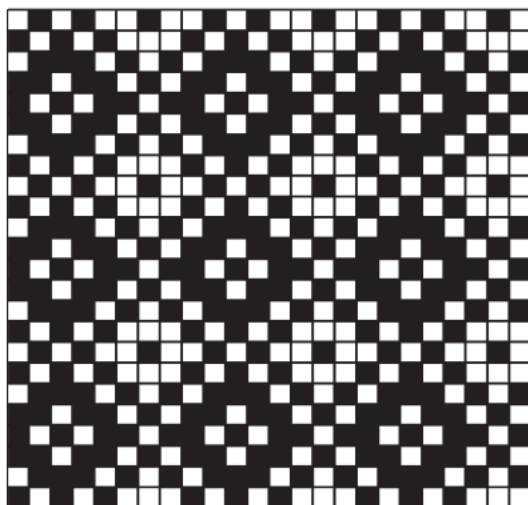


## Jach'a qhananaka



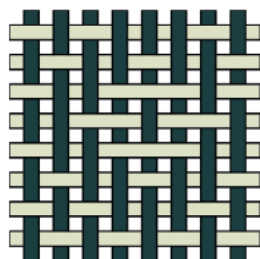
Jach'a qhananaka sawuta  
uñanchayata.

				5						5					5				
				4		4				4		4				4		4	
		3						3					3				3		
		2		2				2		2				2		2			
1				1				1				1				1			



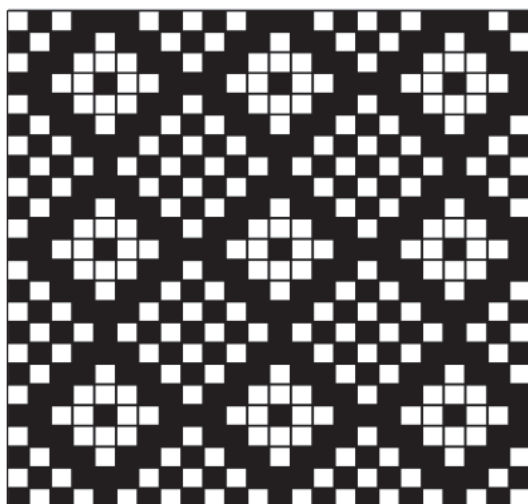
	2			5					
1		3							
	2	3	4						
1	2							5	
	1		3	4					
1		2						3	5
		2	3	4					
1		3							
	2							5	
1		3							
	2	3	4						
1		2						3	5
	1		3	4					
1		2							5
	2	3	4						
1		3							
	2							5	
1		3							
	2	3	4						
1		2						3	5
	1		3	4					
1		2							5
	2	3	4						
1		3							

## P'uyunaka



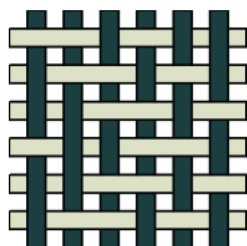
P'uyunaka sawuta  
uñanchayata.

				5						5					5				
				4		4				4		4				4		4	
		3				3				3				3			3		
		2				2		2				2		2				2	
1						1						1							



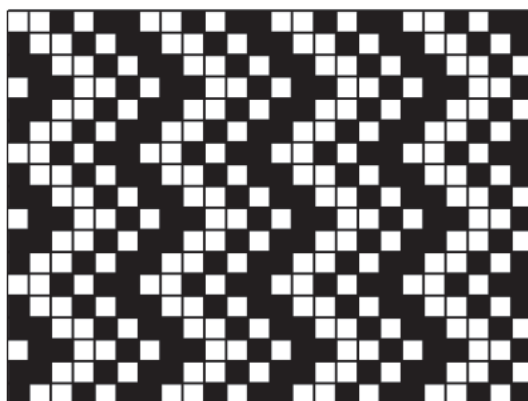
	2		4	5					
1		3	4						
	2	3							
1	2							5	
		2	3						
1		3	4						
	2		4	5					
1		3						5	
	2		4	5					
1		3	4						
	2	3							
1	2							5	
	2	3							
1		3	4						
	2		4	5					
1		3						5	
	2		4	5					
1		3	4						
	2	3							
1	2							5	
	2	3							
1		3	4						
	2		4	5					
1		3							5
	2	3	4						
1		2						4	5
	1		3						

# Silkunaka



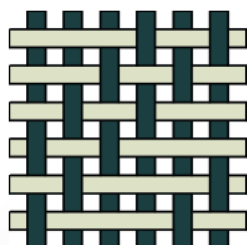
Silkunaka sawuta  
uñanchayata.

			6			6			6			6			6
			5			5			5			5			5
		4			4			4			4			4	
	3				3			3			3			3	
	2				2			2			2			2	
1				1				1				1			



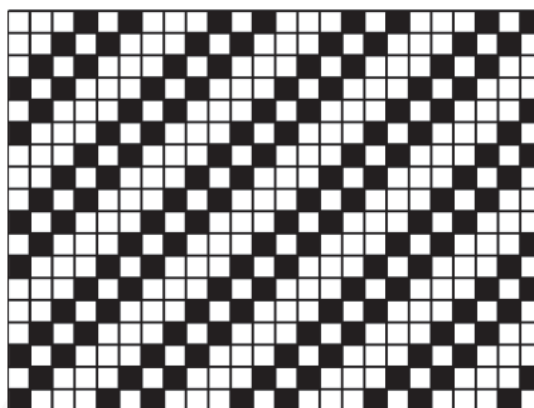
		3		5	6
1		4		6	
1	2		5		
2	3			6	
1	2		5		
1		4		6	
	3		5	6	
1		4		6	
1	2		5		
2	3			6	
1	2		5		
1		4		6	
	3		5	6	
1		4		6	
1	2		5		
2	3			6	
1	2		5		
1		4		6	

# Thakhinaka



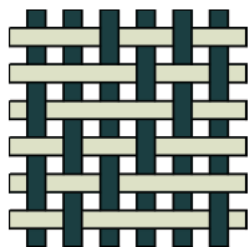
Thakhinaka sawuta  
uñanchayata.

			6			6			6			6			6
			5			5			5			5			5
		4			4			4			4			4	
	3				3			3			3			3	
	2				2			2			2			2	
1				1				1				1			

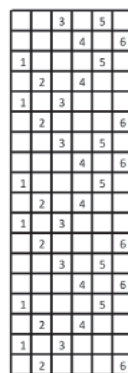
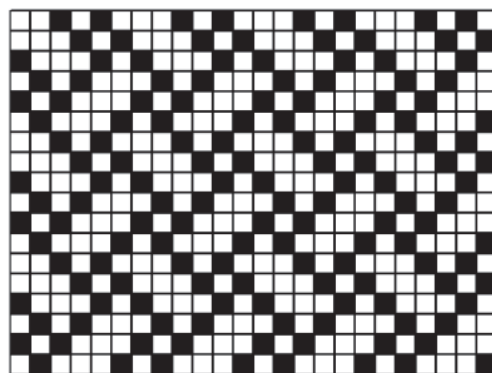
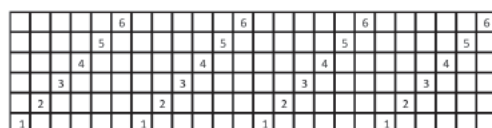


		4		6	
	3		5		
	2		4		
1	3			6	
2			5		
1		4		6	
	3		5		
	2		4		
1	3			6	
2			5		
1		4		6	
	3		5		
	2		4		
1	3			6	
2			5		
1		4		6	
	3		5		
	2		4		
1	3			6	
2			5		
1		4		6	

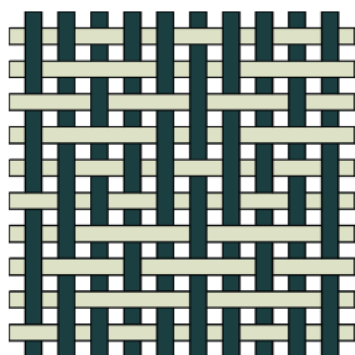
## K'anata



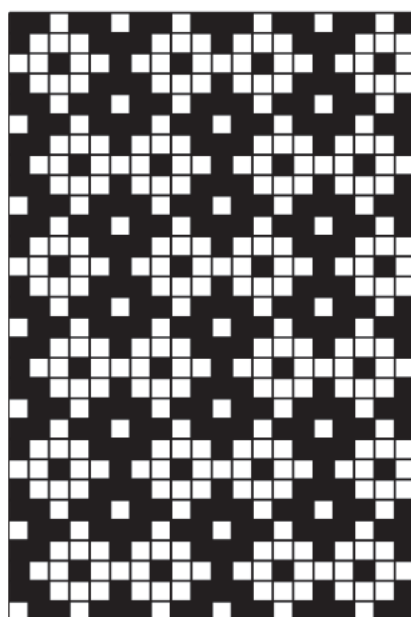
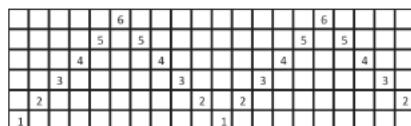
K'anata sawuta uñanchayata.



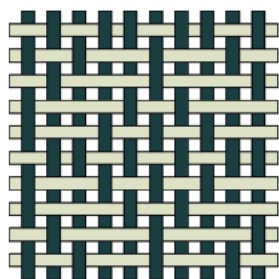
## Nayranaka



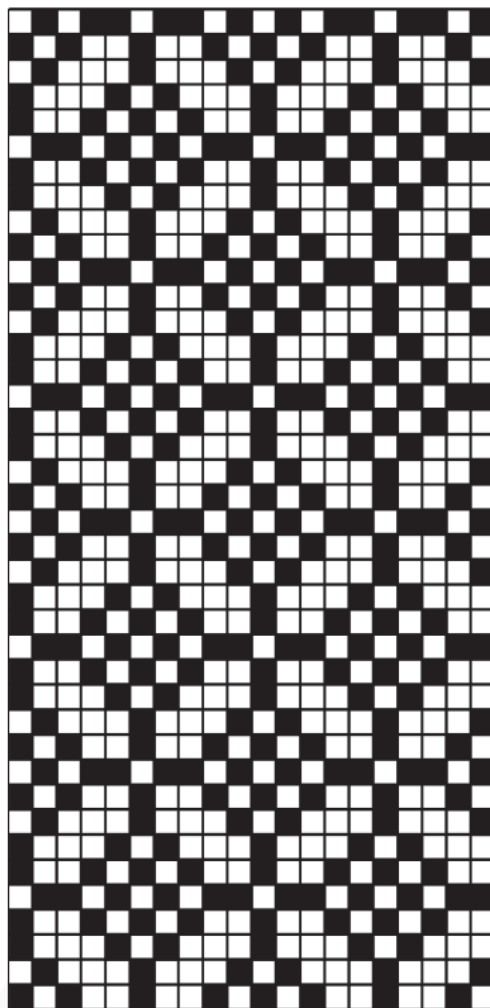
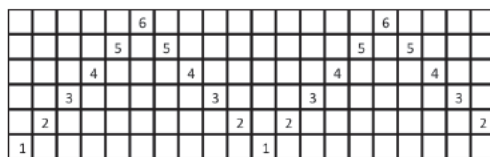
Nayranaka sawuta uñanchayata.



# Panqaranaka



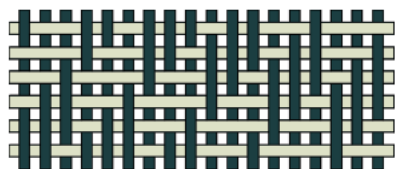
Panqaranaka sawuta  
uñanchayata.



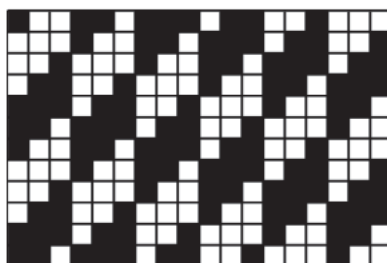
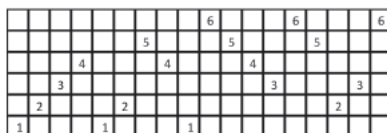




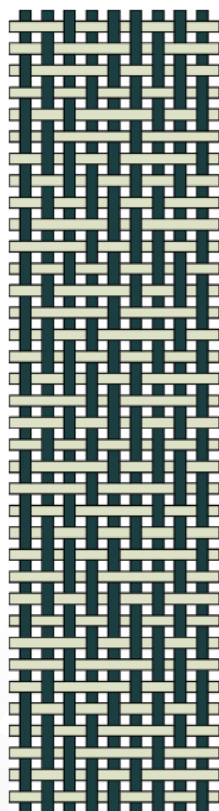
## Kallapunaka



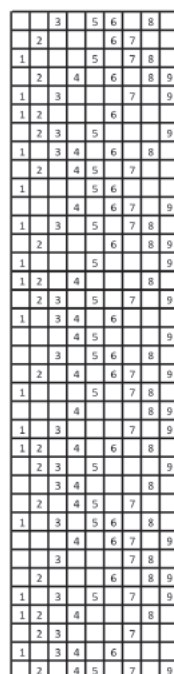
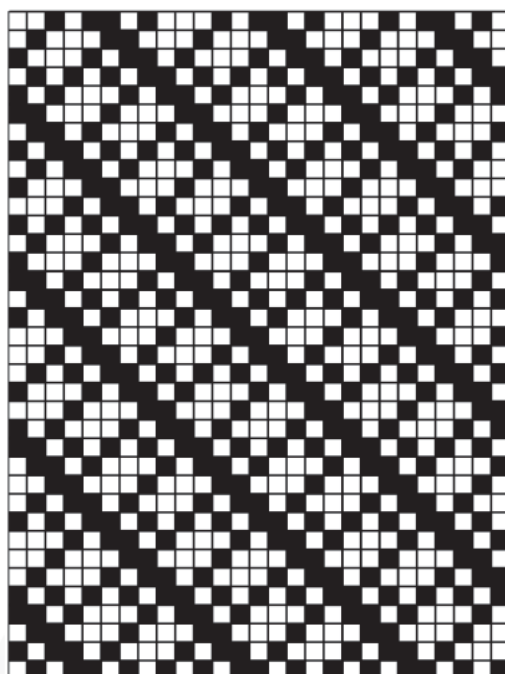
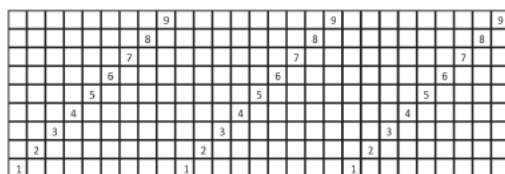
Kallapunaka sawuta ñanchayata.



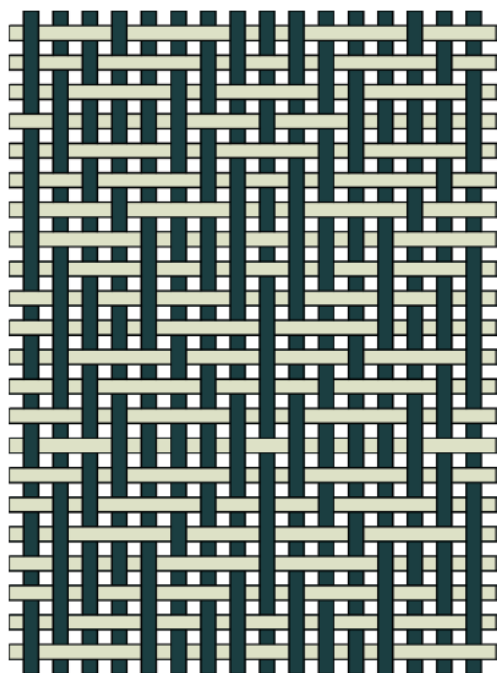
## Uyu uyunaka



Uyu uyunaka sawuta ñanchayata.

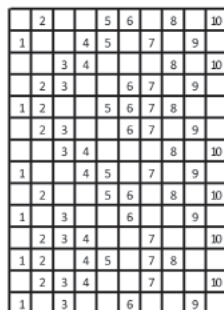
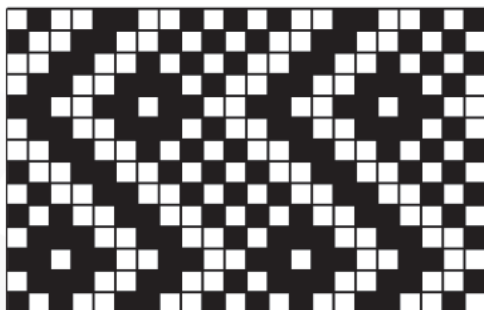
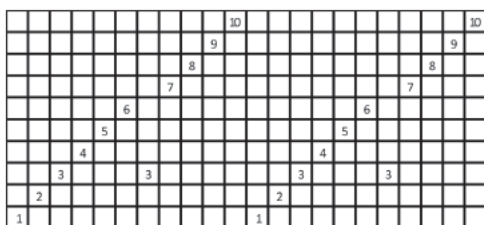


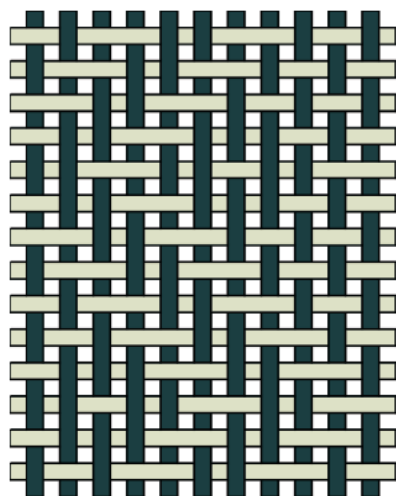




Wara wara sawuta uñanchayata.

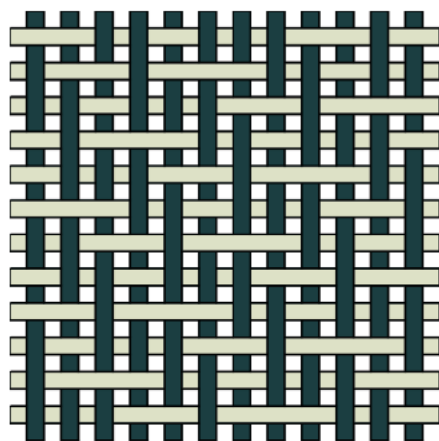
## Silku



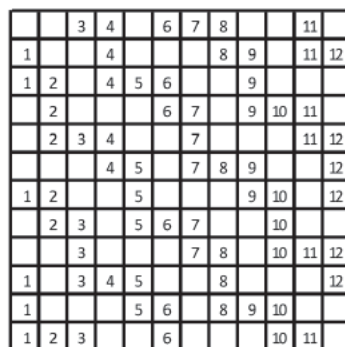
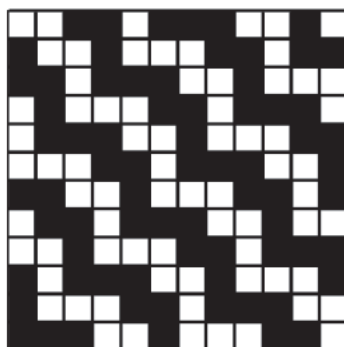
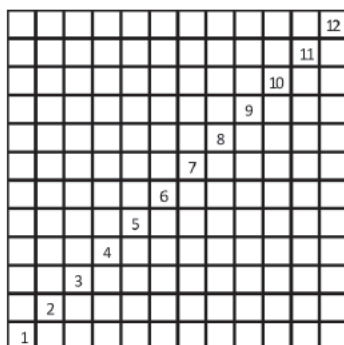


Silku sawuta uñanchayata.

## Qullunaka



Qullunaka sawuta uñanchayata.



## Tukuya arunaka

Jichha pachanakaxa jiwasa aymara näyra laq'a achachila awichanakasana yatinakaparjama sarxatasina markasa irptañawa wakisi, ukhamatwa suma qamaña askinjama jikxataraksna. Qarqapata ayllunxa ch'uqi awayu, istalla, inkhuña, qullqi wayaqa, ch'uspa, chusi ukata juk'ampi sawutanakwa sawupxi. Chachapoya ayllunsti mirinu awayu, lutu awayu, istalla, ikhuña, kapachu, ch'uspa ukhama sawutanakarakwa sawupxaraki, uka sawutanakaxa kunaymani saltanakani sawutarakiwa. Sawuri kullakanakaxa sawutanakana saltanakapa taypiwa jilpacha aymaranakana yatinakapa uñacht'ayapxi.

Sawutanakaxa maya pankjamawa, uka sawutanakanwa achachila awichanakasana yatiñanakapaxa qillqataski, ukhamatwa saltanakana sawupata qhananchasiwayi, ukampirusa uñanchawinakapatsa qhanañchatarakiwa. Tukuya tuqinxu saltanakaru amuyt'asa takiña sawurinakampi jalp'anaka sawuñataki askinjama machaqa sawunakawa wakt'ayataraki, ukanxa kimsa, pusi, phisqha, suxta, llatunka, tunka, tunka payani ukkha illawanakampi sawuñatakirakiwa.

## ULLARATA PANKANAKA

**Cajías Martha, Teresa Gisbert y Silvia Arce**

2003 *Textiles en los andes bolivianos*. La Paz, Fundación Cultural Quipus.

**Callisaya, Justino**

2012 *Aymara sawunaka*. Chuqi Yapu - Bolivia: Unibol Aymara "Tupak Katari", Agencia Catalana de Cooperació al Desenvolupament. Artes gráficas SAN MARTÍN.

2013 *Aymara sawunaka II*. Chuqi Yapu - Bolivia: Unibol Aymara "Tupak Katari", Agencia Catalana de Cooperació al Desenvolupament. Artes gráficas SAN MARTÍN.

**Denise Y. Arnold y Elvira Espejo.**

2010 *Ciencia de las mujeres*. Bolivia: Fundación ALBÓ.

**Denise Y. Arnold y Juan de Dios Yapita.**

1996 *Madre melliza y sus crías - Antología de la papa*. La Paz: HISBOL - ILCA.

**Denise Y. Arnold, Juan de Dios Yapita y Elvira Espejo**

2007 *Hilos sueltos: Los andes desde el textil*. La Paz – Bolivia, ILCA, Editorial Plural.

**Palma, Felipe**

1994 *Operaciones fundamentales en la hilatura de fibras textiles*. Salamanca: HESPÉRIDES.

**Russo, Clara M. Abal**

2008 *Arte textil incaico en ofrendatorios de la alta cordillera andina*. Fundación CEPPA.



**Taranto, Enrique**

2003 *Textiles argentinos*. Buenos Aires: Ediciones Maizal.

**Quenta Perca Lourdes, Aguilar Aguilar W. David y Cutipa Choque Eulogia**

2013 *Aymara Qamasa I. Chuqi Yapu - Bolivia: Unibol Aymara "Tupak Katari", Agencia Catalana de Cooperació al Desenvolupament. Artes gráficas SAN MARTÍN.*

**Viscarra, J.**

1901 *Copacabana de los incas, documentos auto - lingüísticos e isografiados del aymáru - aymára*. La Paz: PALZA HERMANOS.